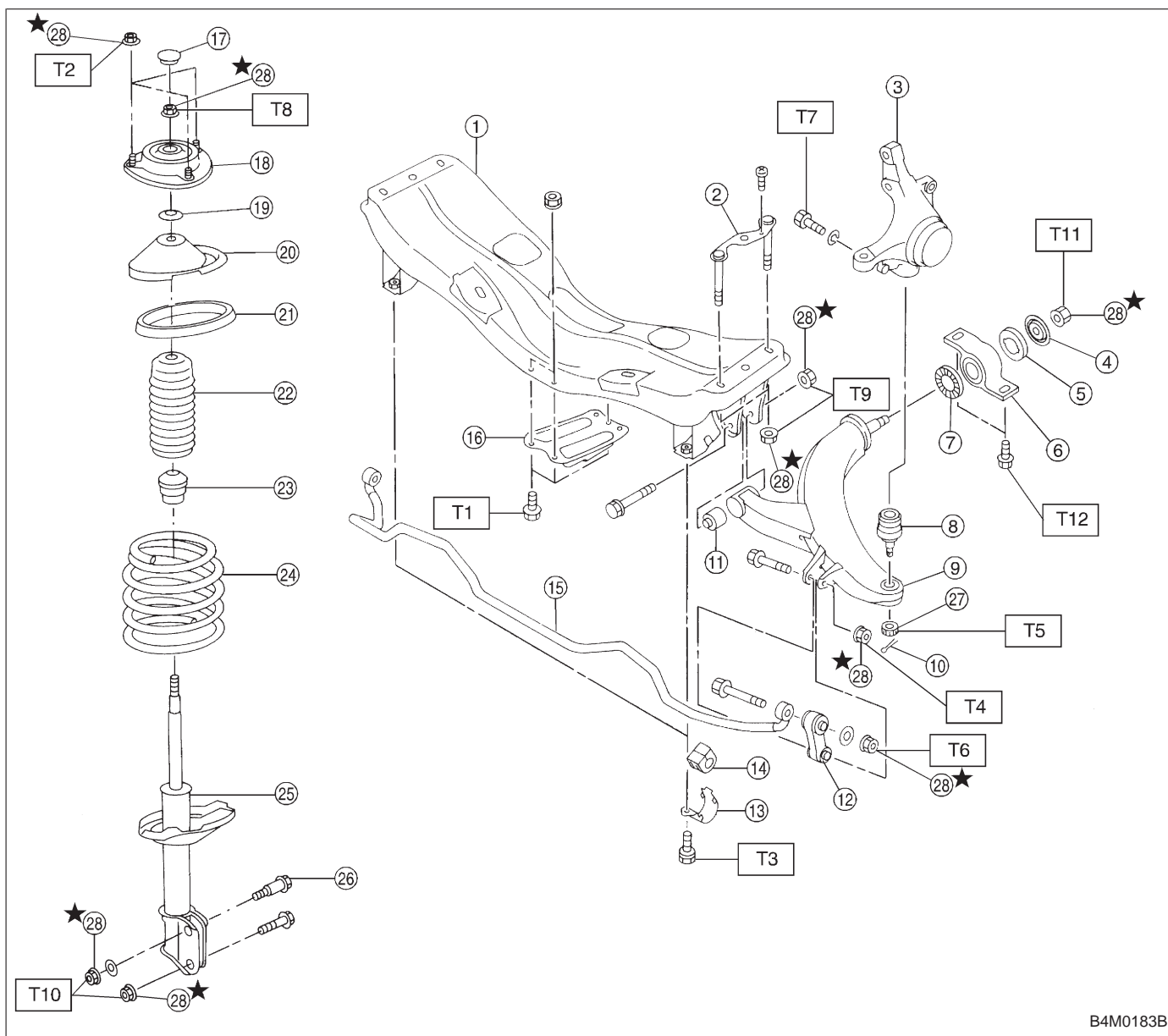


1. Conventional Suspension

1. FRONT SUSPENSION



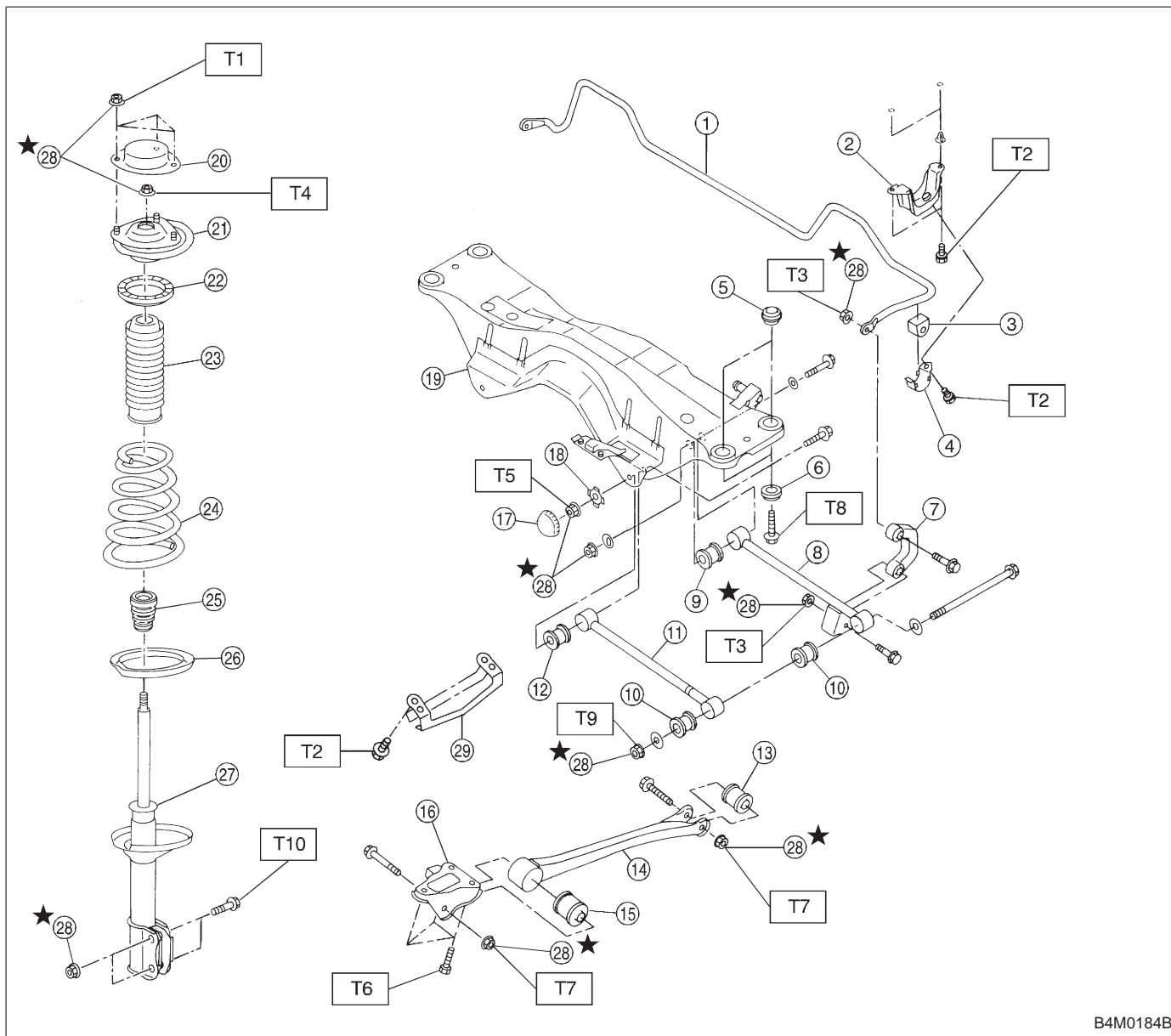
B4M0183B

- | | |
|-----------------------|---------------------|
| ① Crossmember | ⑮ Stabilizer |
| ② Bolt ASSY | ⑯ Jack-up plate |
| ③ Housing | ⑰ Dust seal |
| ④ Washer | ⑱ Strut mount |
| ⑤ Stop rubber (Rear) | ⑲ Spacer |
| ⑥ Rear bushing | ⑳ Upper spring seat |
| ⑦ Stop rubber (Front) | ㉑ Rubber seat |
| ⑧ Ball joint | ㉒ Dust cover |
| ⑨ Transverse link | ㉓ Helper |
| ⑩ Cotter pin | ㉔ Coil spring |
| ⑪ Front bushing | ㉕ Damper strut |
| ⑫ Stabilizer link | ㉖ Adjusting bolt |
| ⑬ Clamp | ㉗ Castle nut |
| ⑭ Bushing | ㉘ Self-locking nut |

Tightening torque: N·m (kg·m, ft·lb)

- T1: 18±5 (1.8±0.5, 13.0±3.6)
 T2: 20±6 (2.0±0.6, 14.5±4.3)
 T3: 25±4 (2.5±0.4, 18.1±2.9)
 T4: 29±5 (3.0±0.5, 21.7±3.6)
 T5: 39 (4, 29)
 T6: 44±6 (4.5±0.6, 32.5±4.3)
 T7: 49±10 (5.0±1.0, 36±7)
 T8: 54±5 (5.5±0.5, 39.8±3.6)
 T9: 98±15 (10.0±1.5, 72±11)
 T10: 152±20 (15.5±2.0, 112±14)
 T11: 186±10 (19.0±1.0, 137±7)
 T12: 245±49 (25.0±5.0, 181±36)

2. REAR SUSPENSION (AWD MODEL)



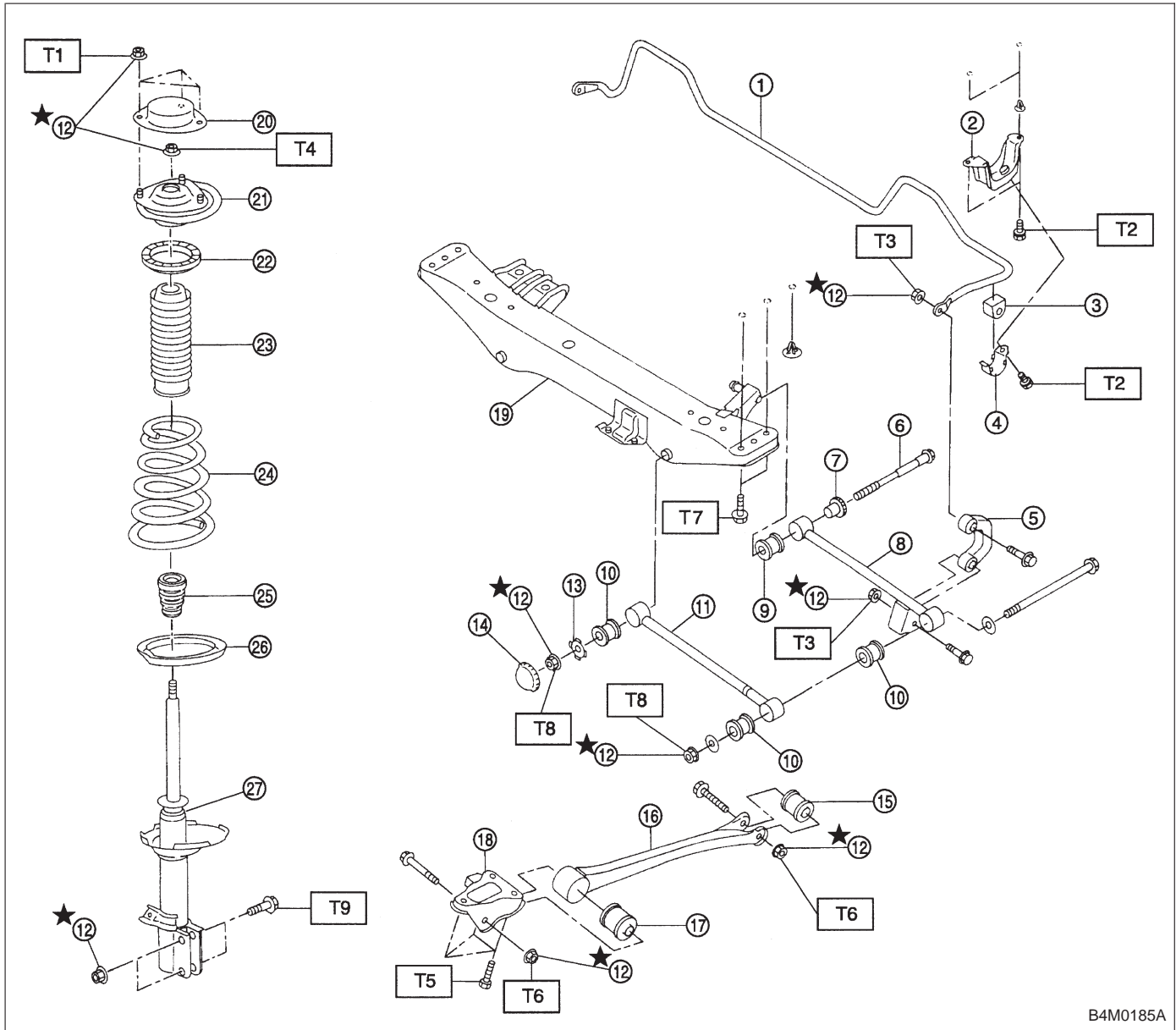
B4M0184B

- ① Stabilizer
- ② Stabilizer bracket
- ③ Stabilizer bushing
- ④ Clamp
- ⑤ Floating bushing
- ⑥ Stopper
- ⑦ Stabilizer link
- ⑧ Rear lateral link
- ⑨ Bushing (C)
- ⑩ Bushing (A)
- ⑪ Front lateral link
- ⑫ Bushing (B)
- ⑬ Trailing link rear bushing
- ⑭ Trailing link
- ⑮ Trailing link front bushing
- ⑯ Trailing link bracket
- ⑰ Cap (Protection)
- ⑱ Washer
- ⑲ Crossmember
- ⑳ Strut mount cap
- ㉑ Strut mount
- ㉒ Rubber seat upper
- ㉓ Dust cover
- ㉔ Coil spring
- ㉕ Helper
- ㉖ Rubber seat lower
- ㉗ Damper strut
- ㉘ Self-locking nut
- ㉙ Crossmember reinforcement lower (Sedan model only)

Tightening torque: N·m (kg-m, ft-lb)

- T1: 20±6 (2.0±0.6, 14.5±4.3)
- T2: 25±7 (2.5±0.7, 18.1±5.1)
- T3: 44±6 (4.5±0.6, 32.5±4.3)
- T4: 59±10 (6.0±1.0, 43±7)
- T5: 98±15 (10.0±1.5, 72±11)
- T6: 98±20 (10.0±2.0, 72±14)
- T7: 113±15 (11.5±1.5, 83±11)
- T8: 127±20 (13.0±2.0, 94±14)
- T9: 137±20 (14.0±2.0, 101±14)
- T10: 196⁺³⁹₋₁₀ (20.0^{+4.0}_{-1.0}, 145⁺²⁹₋₇)

3. REAR SUSPENSION (FWD MODEL)



B4M0185A

- ① Stabilizer
- ② Stabilizer bracket
- ③ Stabilizer bushing
- ④ Clamp
- ⑤ Stabilizer link
- ⑥ Adjusting bolt
- ⑦ Adjusting wheel
- ⑧ Rear lateral link
- ⑨ Bushing (D)
- ⑩ Bushing (A)
- ⑪ Front lateral link
- ⑫ Self-locking nut
- ⑬ Washer
- ⑭ Cap (Protection)
- ⑮ Trailing link rear bushing
- ⑯ Trailing link
- ⑰ Trailing link front bushing
- ⑱ Trailing link bracket
- ⑲ Crossmember
- ⑳ Strut mount cap
- ㉑ Strut mount
- ㉒ Rubber seat upper
- ㉓ Dust cover
- ㉔ Coil spring
- ㉕ Helper
- ㉖ Rubber seat lower
- ㉗ Damper strut

Tightening torque: N·m (kg-m, ft-lb)

- T1: 20±6 (2.0±0.6, 14.5±4.3)
- T2: 25±7 (2.5±0.7, 18.1±5.1)
- T3: 44±6 (4.5±0.6, 32.5±4.3)
- T4: 59±10 (6.0±1.0, 43±7)
- T5: 98±20 (10.0±2.0, 72±14)
- T6: 113±15 (11.5±1.5, 83±11)
- T7: 127±20 (13.0±2.0, 94±14)
- T8: 137±20 (14.0±2.0, 101±14)
- T9: 196⁺³⁹₋₁₀ (20.0^{+4.0}_{-1.0}, 145⁺²⁹₋₇)