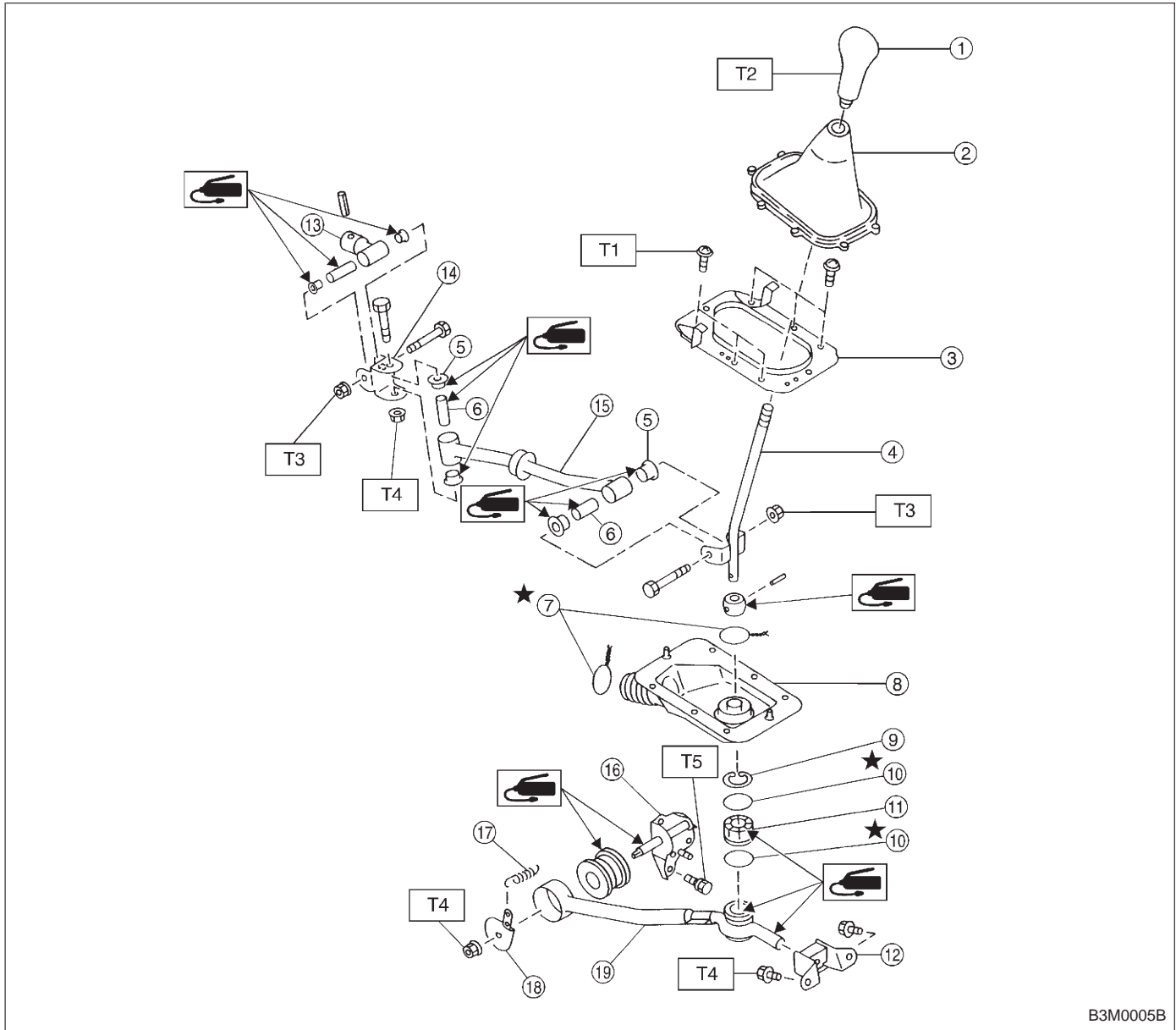


1. Manual Transmission

1. AWD MODEL



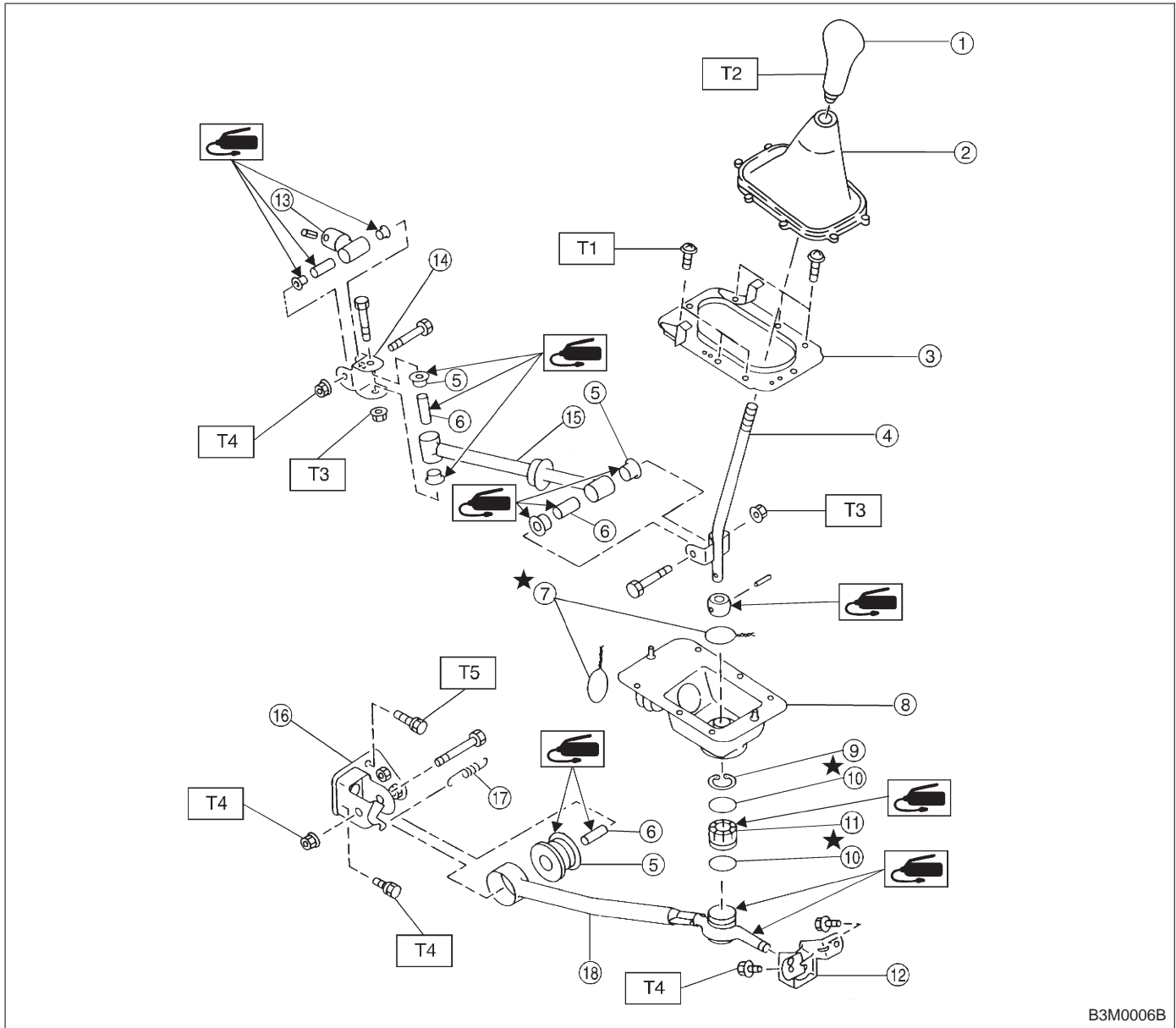
B3M0005B

- ① Gear shift knob
- ② Console boot
- ③ Boot plate
- ④ Gear shift lever
- ⑤ Bush
- ⑥ Spacer
- ⑦ Locking wire
- ⑧ Boot
- ⑨ Snap ring
- ⑩ O-ring
- ⑪ Bush
- ⑫ Cushion rubber
- ⑬ Boss
- ⑭ Joint

- ⑮ Rod
- ⑯ Bracket
- ⑰ Spring
- ⑱ Washer
- ⑲ Stay

Tightening torque: N·m (kg·m, ft·lb)
T1: 4.4±1.5 (0.45±0.15, 3.3±1.1)
T2: 5 (0.51, 3.7)
T3: 12±3 (1.2±0.3, 8.7±2.2)
T4: 18±5 (1.8±0.5, 13.0±3.6)
T5: 24.5±2 (2.50±0.20, 18.07±1.48)

2. FWD MODEL



B3M0006B

- ① Gear shift knob
- ② Console boot
- ③ Boot plate
- ④ Gear shift lever
- ⑤ Bush
- ⑥ Spacer
- ⑦ Locking wire
- ⑧ Boot
- ⑨ Snap ring
- ⑩ O-ring
- ⑪ Bush
- ⑫ Cushion rubber
- ⑬ Boss

- ⑭ Joint
- ⑮ Rod
- ⑯ Bracket
- ⑰ Spring
- ⑱ Stay

Tightening torque: N·m (kg·m, ft·lb)

T1: 4.4±1.5 (0.45±0.15, 3.3±1.1)

T2: 5 (0.51, 3.7)

T3: 12±3 (1.2±0.3, 8.7±2.2)

T4: 18±5 (1.8±0.5, 13.0±3.6)

T5: 29±5 (3.0±0.5, 21.7±3.6)