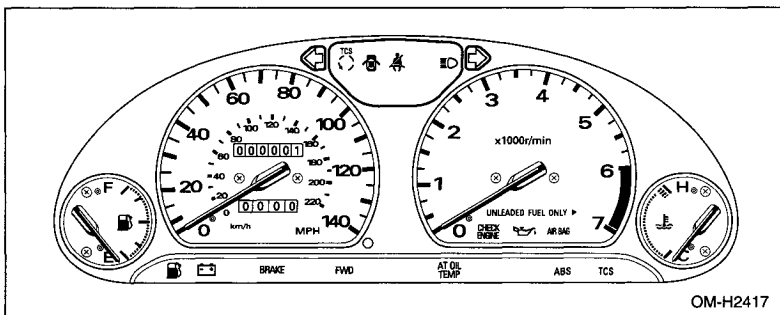


Gauges



■ Speedometer

The speedometer shows the vehicle speed.

■ Odometer

The odometer shows the total distance that the vehicle has been driven.

■ Trip meter

The trip meter shows the distance that the vehicle has been driven since you last set it to zero.

To set the trip meter to zero, press the knob.

■ Tachometer (if equipped)

⚠ CAUTION

Do not operate the engine with the tachometer in the red zone except for brief acceleration in an emergency. This may cause damage to the engine.

The tachometer shows the engine speed in thousands of revolutions per minute.

■ Fuel gauge

The fuel gauge shows approximately the amount of the fuel in the tank. The gauge does not return to "E" even though the ignition switch is in the "ACC" or "LOCK" position.

The gauge may move slightly during braking, turning or acceleration due to fuel movement within the tank.

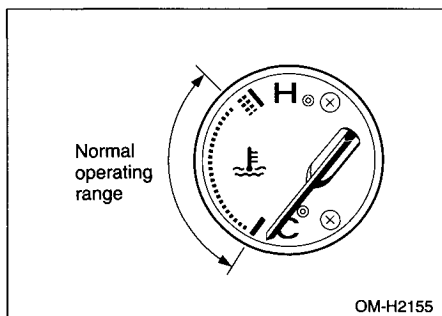
■ Temperature gauge



CAUTION

If the pointer exceeds the normal operating range, safely stop the vehicle as soon as possible.

See "In case of emergency" in this manual.



The temperature gauge shows engine coolant temperature when the ignition switch is in the "ON" position.

The coolant temperature will vary in accordance with the outside temperature and driving conditions.