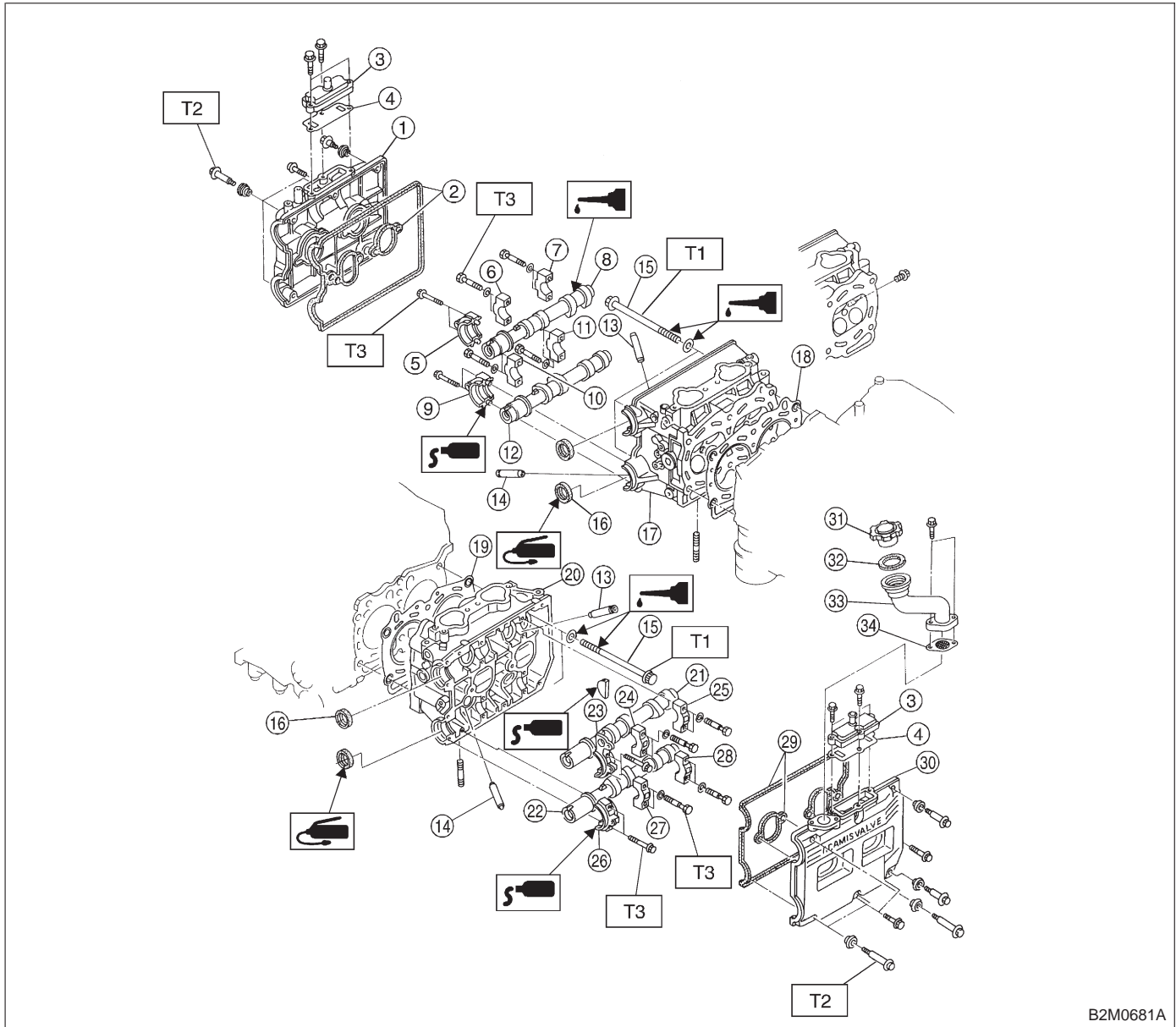


## 2. Cylinder Head and Camshaft



B2M0681A

- |                                    |                                   |                                    |
|------------------------------------|-----------------------------------|------------------------------------|
| ① Rocker cover (RH)                | ⑭ Exhaust valve guide             | ⑳ Exhaust camshaft cap (Center LH) |
| ② Rocker cover gasket (RH)         | ⑮ Cylinder head bolt              | ㉑ Exhaust camshaft cap (Rear LH)   |
| ③ Oil separator cover              | ⑯ Oil seal                        | ㉒ Rocker cover gasket (LH)         |
| ④ Gasket                           | ⑰ Cylinder head (RH)              | ㉓ Rocker cover (LH)                |
| ⑤ Intake camshaft cap (Front RH)   | ⑱ Cylinder head gasket (LH)       | ㉔ Oil filler cap                   |
| ⑥ Intake camshaft cap (Center RH)  | ⑲ Cylinder head gasket (LH)       | ㉕ Gasket                           |
| ⑦ Intake camshaft cap (Rear RH)    | ⑳ Cylinder head (LH)              | ㉖ Oil filler duct                  |
| ⑧ Intake camshaft (RH)             | ㉑ Intake camshaft (LH)            | ㉗ Gasket                           |
| ⑨ Exhaust camshaft cap (Front RH)  | ㉒ Exhaust camshaft (LH)           |                                    |
| ⑩ Exhaust camshaft cap (Center RH) | ㉓ Intake camshaft cap (Front LH)  |                                    |
| ⑪ Exhaust camshaft cap (Rear RH)   | ㉔ Intake camshaft cap (Center LH) |                                    |
| ⑫ Exhaust camshaft (RH)            | ㉕ Intake camshaft cap (Rear LH)   |                                    |
| ⑬ Intake valve guide               | ㉖ Exhaust camshaft (Front LH)     |                                    |

**Tightening torque: N·m (kg·m, ft·lb)**  
**T1: Refer to 2-3b [W4E1].**  
**T2: 5 (0.5, 3.6)**  
**T3: 10 (1.0, 7)**