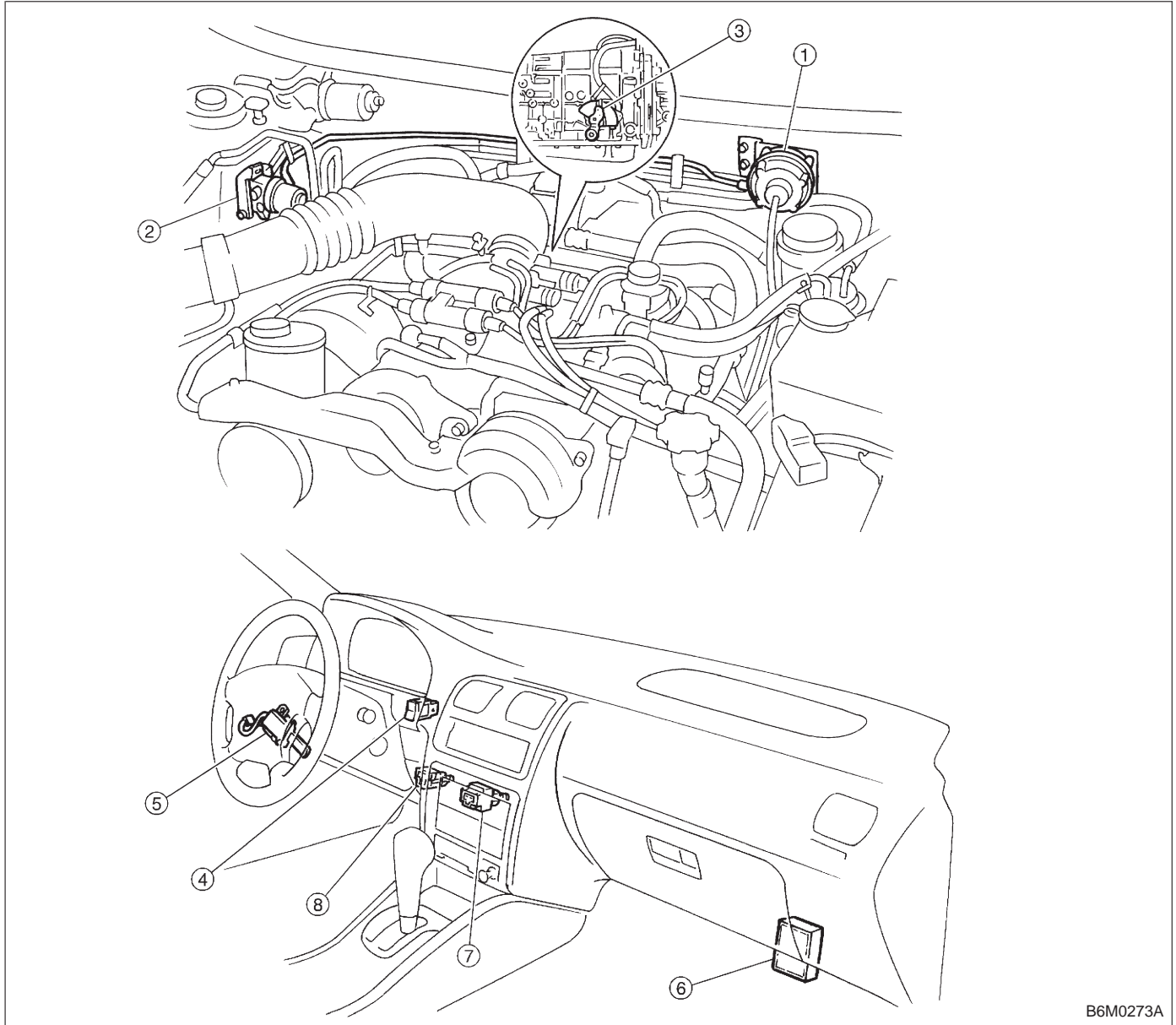


3. Electrical Components Location



B6M0273A

- ① Actuator
- ② Vacuum pump and valve
- ③ Inhibitor switch (AT)
- ④ Cruise control main switch

- ⑤ Cruise control command switch
- ⑥ Cruise control module
- ⑦ Stop and brake switch
- ⑧ Clutch switch (MT)