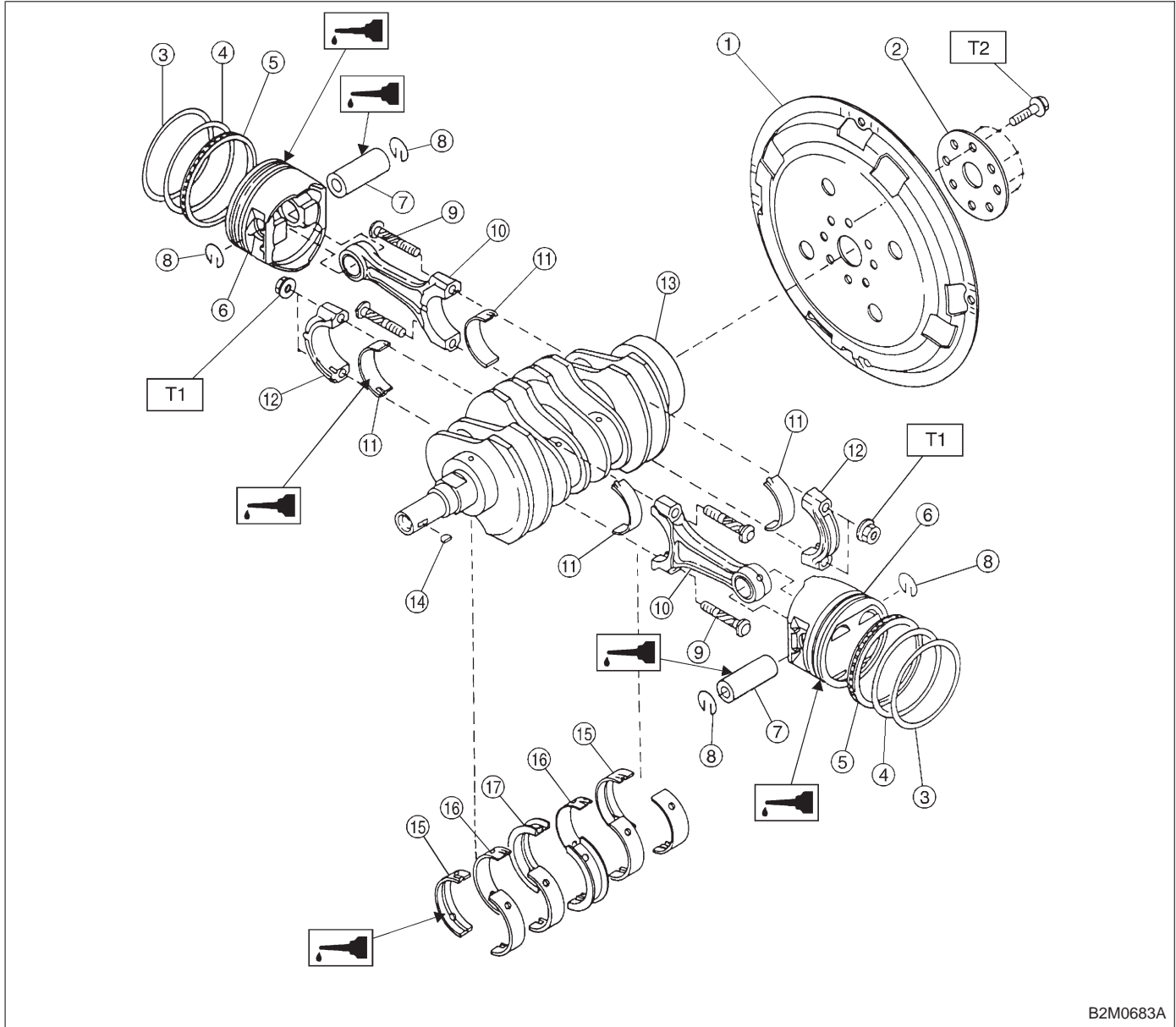


5. Crankshaft and Piston



B2M0683A

- ① Drive plate
- ② Reinforcement
- ③ Top ring
- ④ Second ring
- ⑤ Oil ring
- ⑥ Piston
- ⑦ Piston pin
- ⑧ Circlip
- ⑨ Connecting rod bolt
- ⑩ Connecting rod
- ⑪ Connecting rod bearing

- ⑫ Connecting rod cap
- ⑬ Crankshaft
- ⑭ Woodruff key
- ⑮ Crankshaft bearing #1, #5
- ⑯ Crankshaft bearing #2, #4
- ⑰ Crankshaft bearing #3

**Tightening torque: N·m (kg·m, ft·lb)**

**T1: 44±2 (4.5±0.2, 32.5±1.4)**

**T2: 72±3 (7.3±0.3, 52.8±2.2)**