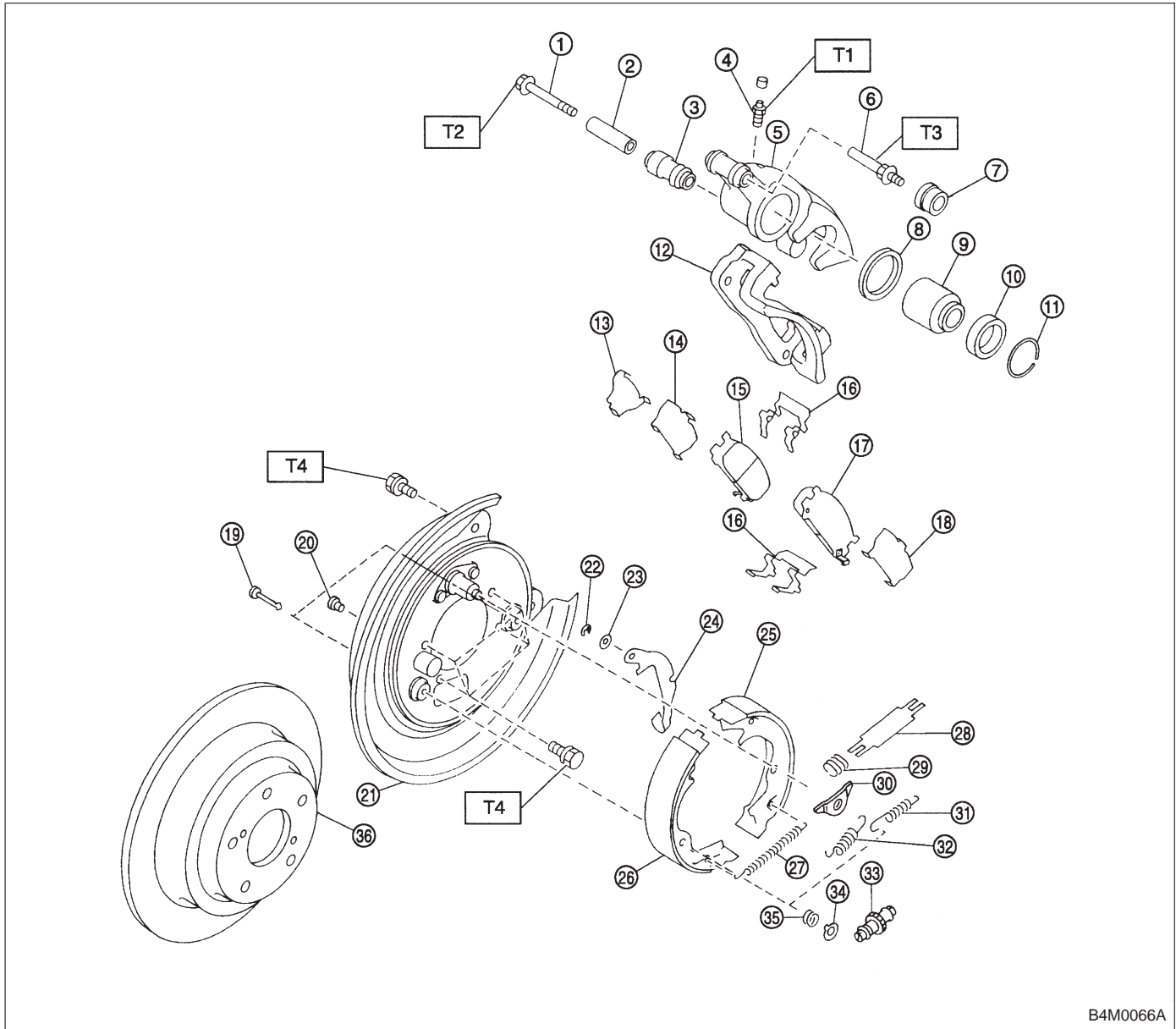


2. Rear Disc Brake



B4M0066A

- ① Lock pin
- ② Lock pin sleeve
- ③ Lock pin boot
- ④ Air bleeder screw
- ⑤ Caliper body
- ⑥ Guide pin
- ⑦ Guide pin boot
- ⑧ Piston seal
- ⑨ Piston
- ⑩ Piston boot
- ⑪ Boot ring
- ⑫ Support
- ⑬ Shim
- ⑭ Inner shim
- ⑮ Inner pad

- ⑯ Pad clip
- ⑰ Outer pad
- ⑱ Outer shim
- ⑲ Shoe hold-down pin
- ⑳ Cover
- ㉑ Back plate
- ㉒ Retainer
- ㉓ Spring washer
- ㉔ Parking brake lever
- ㉕ Parking brake shoe (Secondary)
- ㉖ Parking brake shoe (Primary)
- ㉗ Adjusting spring
- ㉘ Strut

- ㉙ Strut shoe spring
- ㉚ Shoe guide plate
- ㉛ Secondary shoe return spring
- ㉜ Primary shoe return spring
- ㉝ Adjuster
- ㉞ Shoe hold-down cup
- ㉟ Shoe hold-down spring
- ㊱ Disc rotor

**Tightening torque: N·m (kg·m, ft·lb)**

**T1: 8±1 (0.8±0.1, 5.8±0.7)**

**T2: 20±4 (2.0±0.4, 14.5±2.9)**

**T3: 26±5 (2.7±0.5, 19.5±3.6)**

**T4: 52±6 (5.3±0.6, 38.3±4.3)**