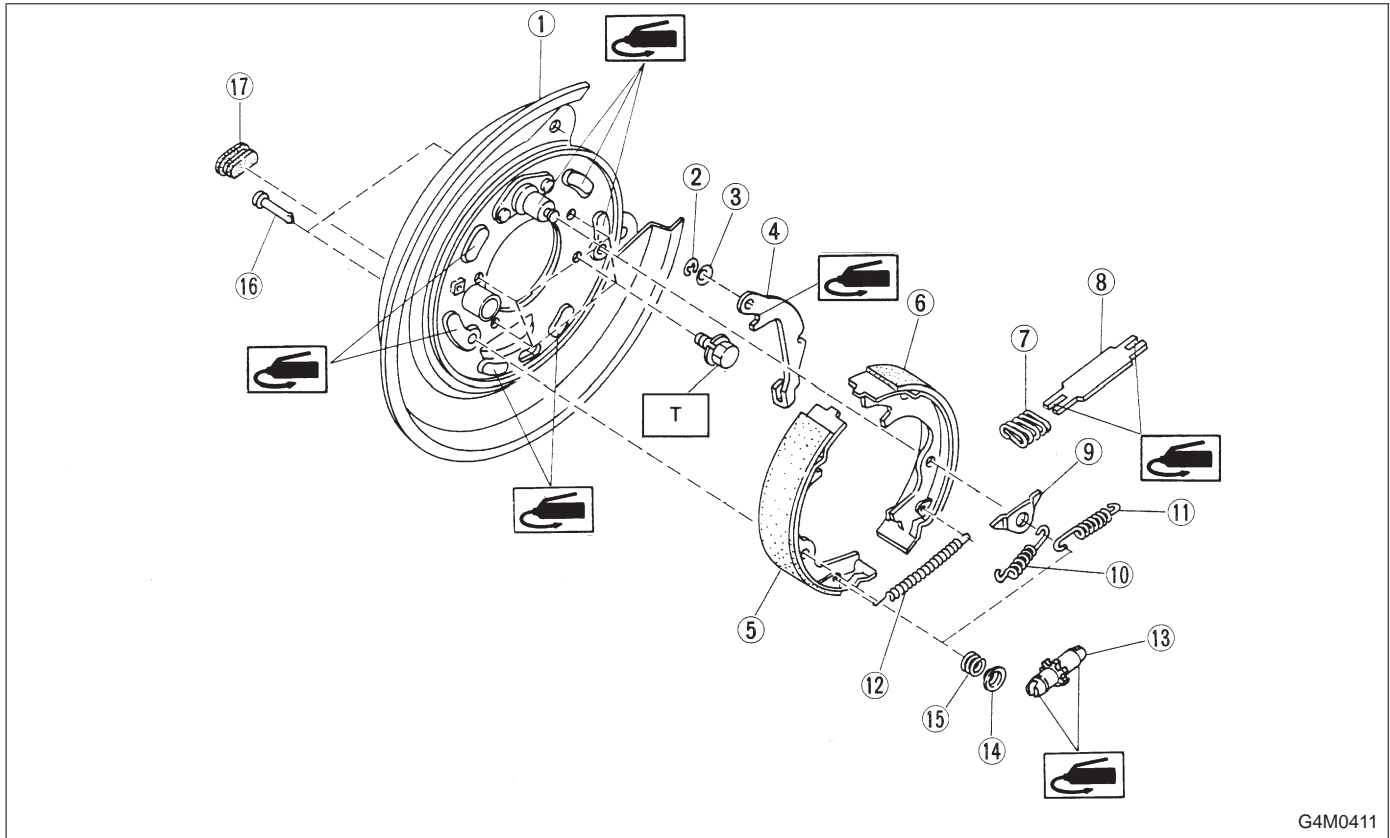


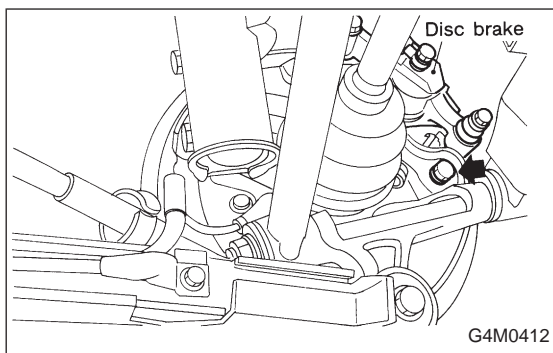
### 4. Parking Brake (Rear Disc Brake)



G4M0411

- |                                  |                           |                         |
|----------------------------------|---------------------------|-------------------------|
| ① Back plate                     | ⑧ Strut                   | ⑬ Shoe hold down spring |
| ② Retainer                       | ⑨ Shoe guide plate        | ⑭ Shoe hold down pin    |
| ③ Spring washer                  | ⑩ Primary return spring   | ⑰ Adjusting hole cover  |
| ④ Lever                          | ⑪ Secondary return spring |                         |
| ⑤ Parking brake shoe (Primary)   | ⑫ Adjusting spring        |                         |
| ⑥ Parking brake shoe (Secondary) | ⑬ Adjuster                |                         |
| ⑦ Strut spring                   | ⑭ Shoe hold-down cup      |                         |

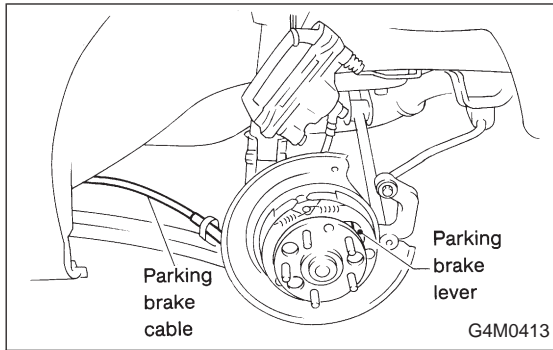
**Tightening torque: N·m (kg·m, ft·lb)**  
**T: 52±6 (5.3±0.6, 38.3±4.3)**



### A: REMOVAL

- 1) Remove the two mounting bolts to the disc brake assembly and remove the disc brake assembly.
- 2) Suspend the disc brake assembly so that the hose is not stretched.
- 3) Remove the disc rotor.
- 4) Remove shoe return spring from parking brake assembly.
- 5) Remove front shoe hold down spring and pin with pliers.
- 6) Remove strut and strut spring.
- 7) Remove adjuster assembly from parking brake assembly.
- 8) Remove brake shoe.
- 9) Remove rear shoe hold-down spring and pin with pliers.

## 4. Parking Brake (Rear Disc Brake)



- 10) Remove parking cable from parking lever.
- 11) Using a standard screwdriver, raise retainer. Remove parking lever and washer from brake shoe.

**B: INSPECTION**

- 1) Measure brake disc inside diameter. If the disc is scored or worn, replace the brake disc.

**Disc inside diameter:****Standard****170 mm (6.69 in)****Service limit****171 mm (6.73 in)**

- 2) Measure the lining thickness. If it exceeds the limit, replace shoe assembly.

**Lining thickness:****Standard****3.2 mm (0.126 in)****Service limit****1.5 mm (0.059 in)****CAUTION:**

Replace the brake shoes on the right and left brake assembly at the same time.

**C: INSTALLATION****CAUTION:**

Be sure lining surface is free from oil contamination.

**Brake grease:**

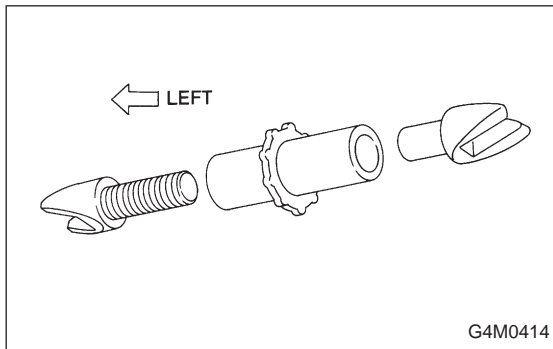
**Dow Corning Molykote No. 7439 (Part No. 725191460)**

- 1) Apply brake grease to the following places.
  - Six contact surfaces of shoe rim and back plate packing
  - Contact surface of shoe wave and anchor pin
  - Contact surface of lever and strut
  - Contact surface of shoe wave and adjuster assembly
  - Contact surface of shoe wave and strut
  - Contact surface of lever and shoe wave

2) Installation is in reverse order of removal.

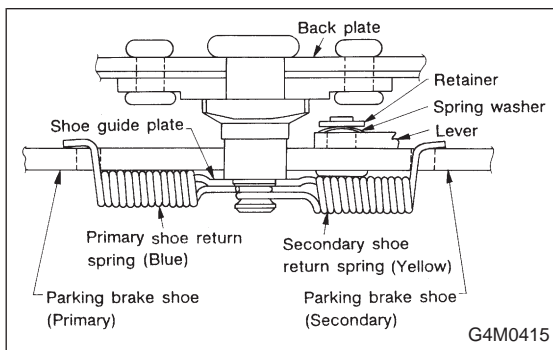
**CAUTION:**

- Use new retainers and clinch them when installing brake shoes to levers.
- Ensure that parking lever moves smoothly.
- Do not confuse left parking lever with right one.
- Do not confuse left strut with right one.



**NOTE:**

Ensure that adjuster assembly is securely installed with screw in the left side, facing vehicle front.



**NOTE:**

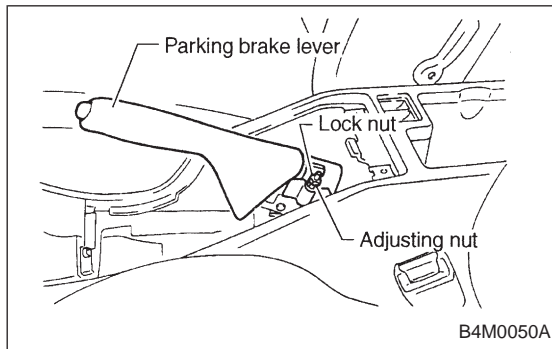
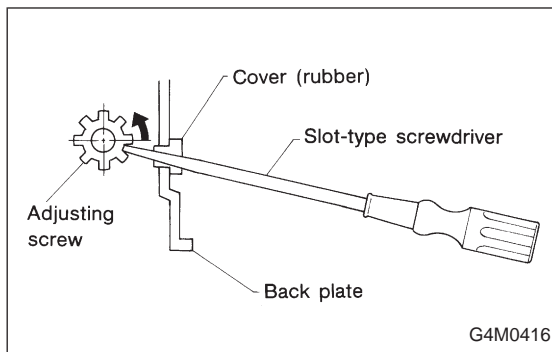
Ensure that shoe return spring is installed as shown in Figure.

3) Adjust parking brakes. <Ref. to 4-4 [W4D1].>

**CAUTION:**

After replacing parking brake lining, be sure to drive vehicle for “break-in” purposes.

- (1) Drive the vehicle about 35 km/h (22 MPH).
- (2) With the parking brake release button pushed in, pull the parking brake lever gently, pulling with a force of approximately 147 N (15 kg, 33 lb).
- (3) Drive the vehicle for about 200 m (0.12 mile) in this condition.
- (4) Wait 5 to 10 minutes for the parking brake to cool down. Repeat this procedure once more.
- (5) After breaking-in, re-adjust parking brakes.



## D: PARKING BRAKE ADJUSTMENT

### 1. SHOE CLEARANCE ADJUSTMENT

- 1) Remove adjusting hole cover from back plate.
- 2) Turn adjusting screw using a slot-type screwdriver until brake shoe is in close contact with disc rotor.
- 3) Turn back (downward) adjusting screw 3 or 4 notches.
- 4) Install adjusting hole cover to back plate.

### 2. LEVER STROKE ADJUSTMENT

- 1) Remove console box lid.
- 2) Forcibly pull parking brake lever 3 to 5 times.
- 3) Adjust parking brake lever by turning adjusting nut until parking brake lever stroke is set at 6 notches with operating force of 196 N (20 kg, 44 lb).
- 4) Tighten lock nut.
- 5) Install console box lid.

#### **Lever stroke:**

**7 to 8 notches when pulled  
with a force of 196 N (20 kg, 44 lb)**

#### **Tightening torque (Lock nut):**

**5.9±1.5 N·m (0.60±0.15 kg-m, 4.3±1.1 ft-lb)**

## 5. Master Cylinder

### A: REMOVAL

- 1) Thoroughly drain brake fluid from reservoir tank.
- 2) Disconnect fluid level indicator harness connector.
- 3) Remove brake pipes from master cylinder.
- 4) Remove master cylinder mounting nuts, and take out master cylinder from brake booster.

#### **CAUTION:**

**Be extremely careful not to spill brake fluid. Brake fluid spilt on the vehicle body will harm the painted surface; wipe it off quickly if spilt.**