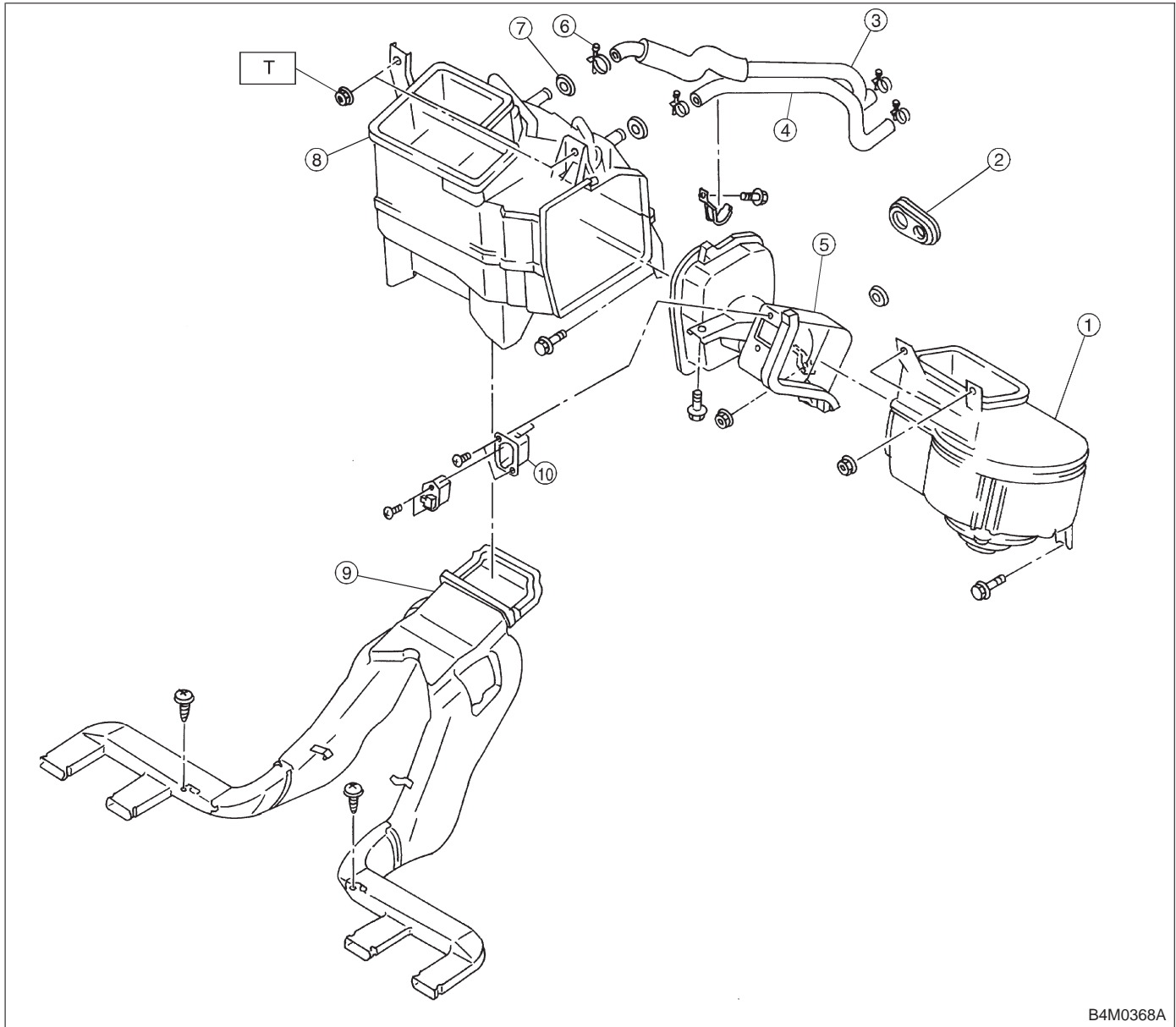


1. Heater System



B4M0368A

- ① Intake unit
- ② Grommet
- ③ Hose (Inlet)
- ④ Hose (Outlet)
- ⑤ Heater duct
- ⑥ Clamp
- ⑦ Grommet
- ⑧ Heater unit

- ⑨ Rear heater duct
- ⑩ Resistor

Tightening torque: N·m (kg·m, ft·lb)
T: 7.35±1.96 (0.750±0.200, 5.421±1.446)