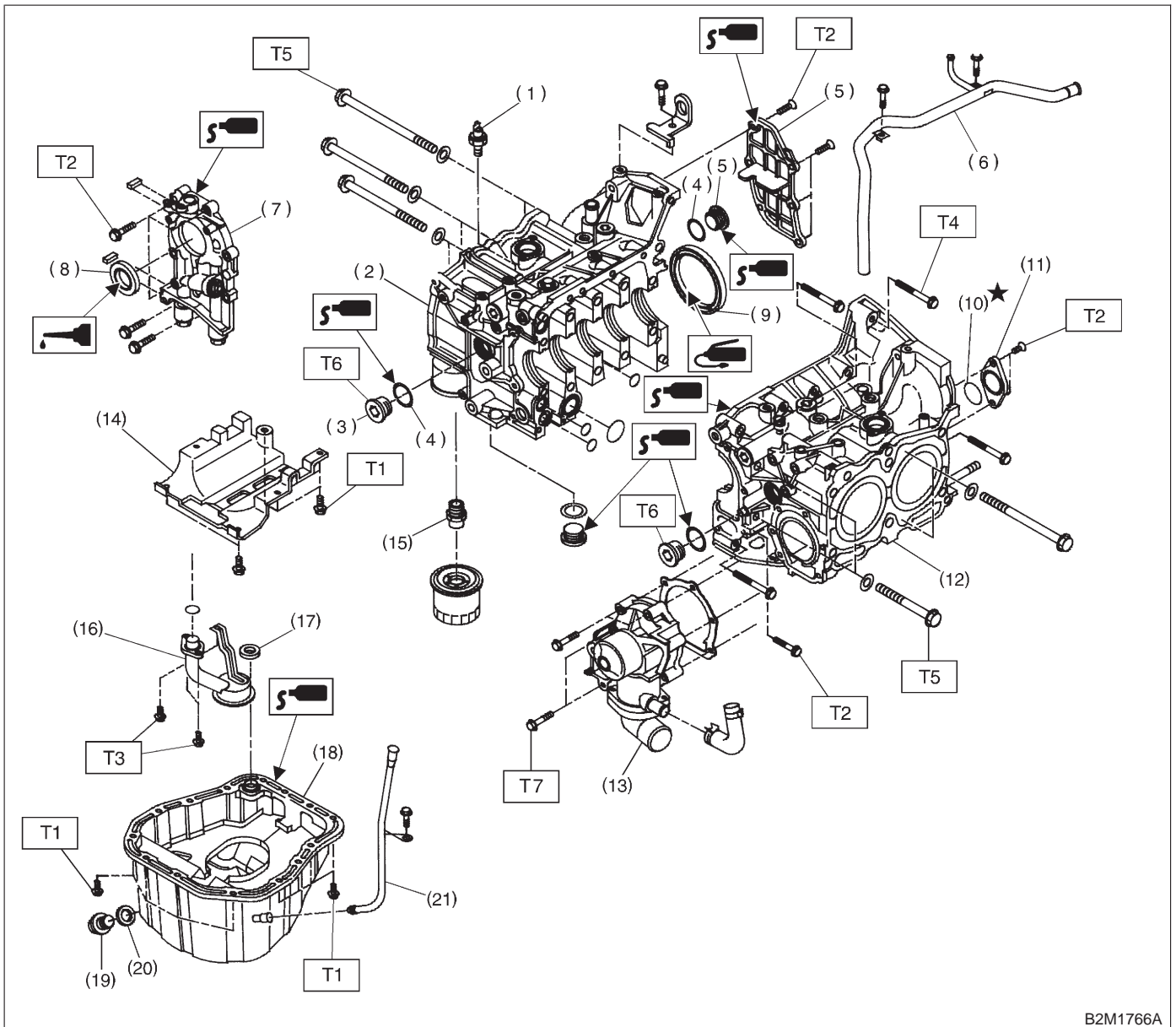


4. Cylinder Block



- |                         |                            |
|-------------------------|----------------------------|
| (1) Oil pressure switch | (12) Cylinder block (LH)   |
| (2) Cylinder block (RH) | (13) Water pump            |
| (3) Service hole plug   | (14) Baffle plate          |
| (4) Gasket              | (15) Oil filter connector  |
| (5) Oil separator cover | (16) Oil strainer          |
| (6) Water by-pass pipe  | (17) Gasket                |
| (7) Oil pump            | (18) Oil pan               |
| (8) Front oil sea       | (19) Drain plug            |
| (9) Rear oil seal       | (20) Metal gasket          |
| (10) O-ring             | (21) Oil level gauge guide |
| (11) Service hole cover |                            |

**Tightening torque: N-m (kg-m, ft-lb)**

- T1: 5 (0.5, 3.6)**  
**T2: 6.4 (0.65, 4.7)**  
**T3: 10 (1.0, 7)**  
**T4: 25±2 (2.5±0.2, 18.1±1.4)**  
**T5: 47±3 (4.8±0.3, 34.7±2.2)**  
**T6: 69±7 (7.0±0.7, 50.6±5.1)**  
**T7: First 12±2 (1.2±0.2, 8.7±1.4)**  
**Second 12±2 (1.2±0.2, 8.7±1.4)**