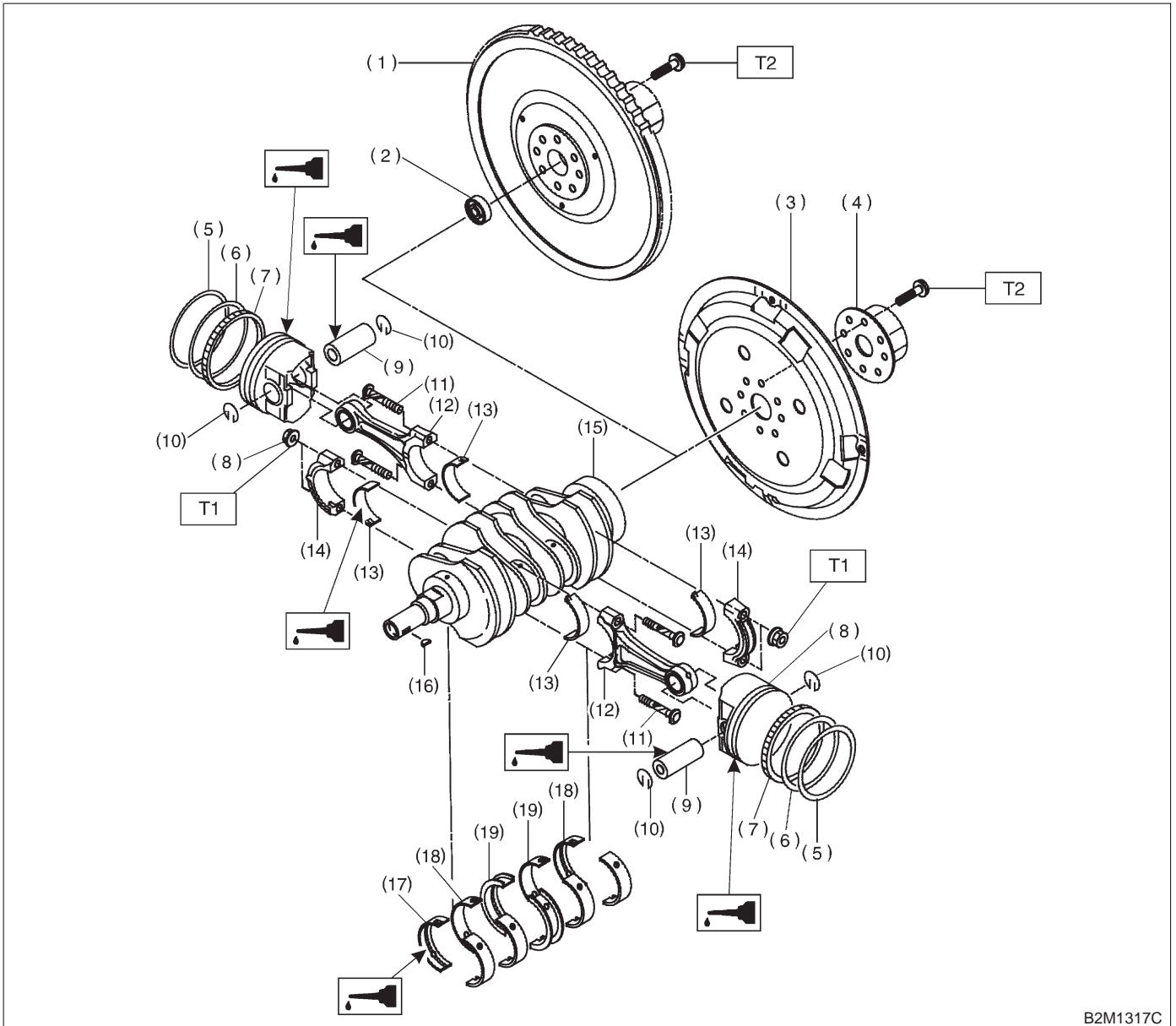


5. Crankshaft and Piston



B2M1317C

- (1) Drive plate (AT)
- (2) Reinforcement (AT)
- (3) Flywheel (MT)
- (4) Bell bearing (MT)
- (5) Top ring
- (6) Second ring
- (7) Oil ring
- (8) Piston

- (9) Piston pin
- (10) Circlip
- (11) Connecting rod bolt
- (12) Connecting rod
- (13) Connecting rod bearing
- (14) Connecting rod cap
- (15) Crankshaft
- (16) Woodruff key

- (17) Crankshaft bearing #1, #5
- (18) Crankshaft bearing #2, #4
- (19) Crankshaft bearing #3

Tightening torque: N-m (kg-m, ft-lb)

T1: 44±2 (4.5±0.2, 32.5±1.4)

T2: 72±3 (7.3±0.3, 52.8±2.2)