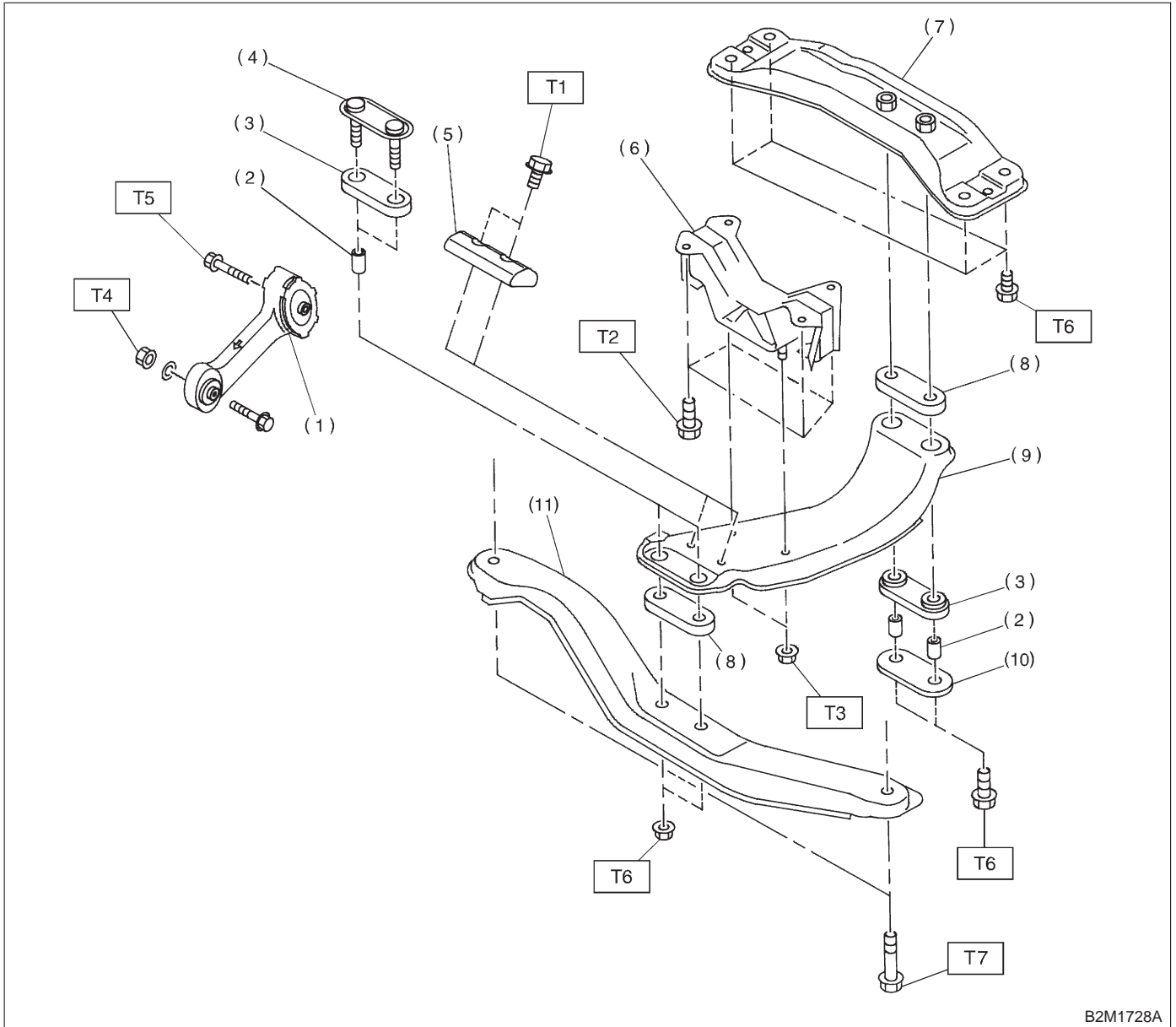


2. Transmission Mounting

A: MT VEHICLES



- | | |
|--------------------------------|------------------------|
| (1) Pitching stopper | (8) Cushion D |
| (2) Spacer | (9) Center crossmember |
| (3) Cushion C | (10) Rear plate |
| (4) Front plate | (11) Front crossmember |
| (5) Damper (2500 cc LTD model) | |
| (6) Rear cushion rubber | |
| (7) Rear crossmember | |

Tightening torque: N·m (kg·m, ft·lb)

T1: 7.4±2.0 (0.75±0.2, 5.4±1.4)

T2: 33±5 (3.4±0.5, 24.6±3.6)

T3: 37±10 (3.8±1.0, 27±7)

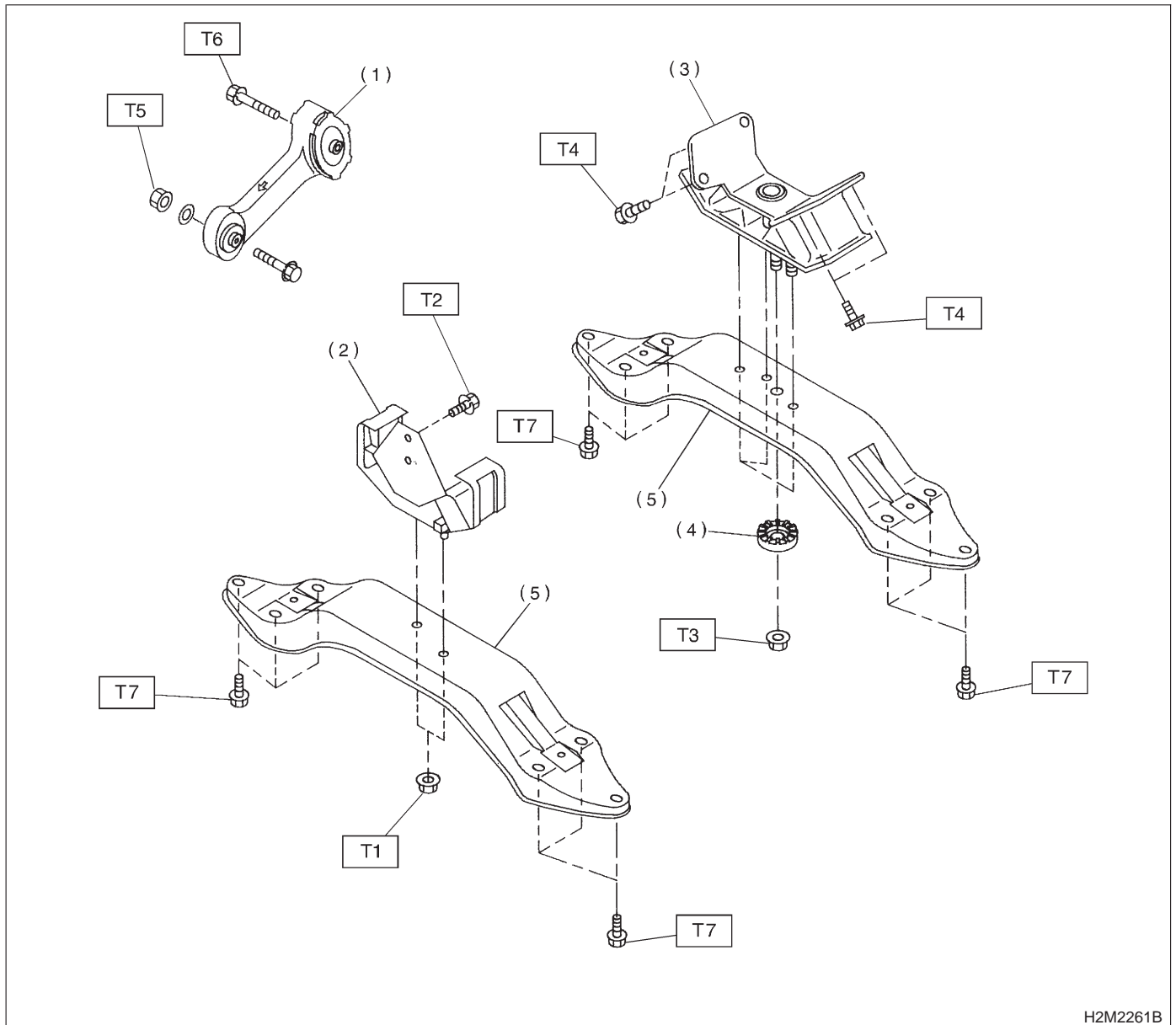
T4: 49±5 (5.0±0.5, 36.2±3.6)

T5: 57±10 (5.8±1.0, 42±7)

T6: 69±15 (7.0±1.5, 51±11)

T7: 137±20 (14±2, 101±14)

B: AT VEHICLES



H2M2261B

- (1) Pitching stopper
- (2) Rear cushion rubber (FWD)
- (3) Rear cushion rubber (AWD)
- (4) Stopper
- (5) Crossmember

Tightening torque: N·m (kg·m, ft·lb)

T1: 18±5 (1.8±0.5, 13.0±3.6)

T2: 26±7 (2.7±0.7, 19.5±5.1)

T3: 37±10 (3.8±1.0, 27±7)

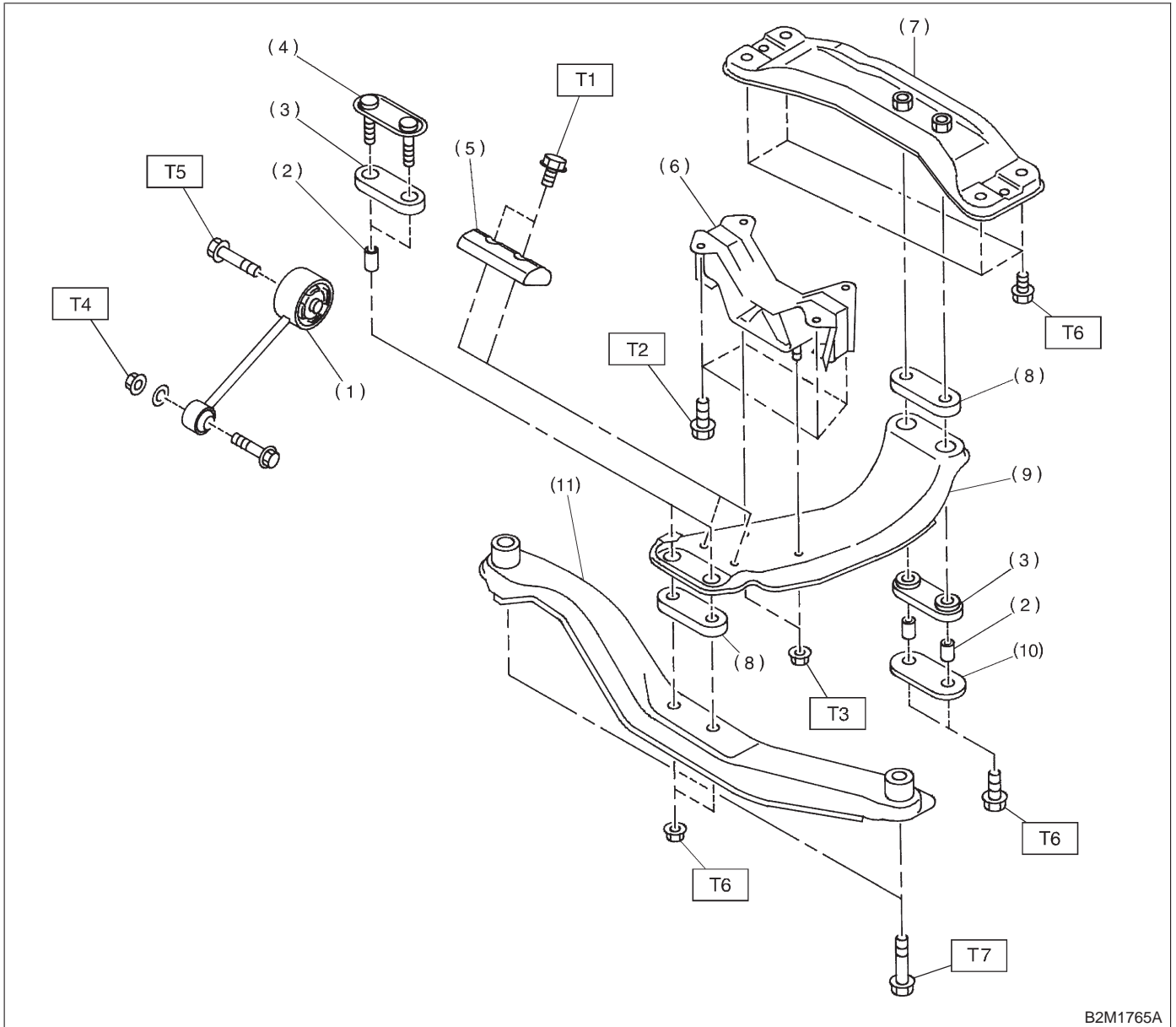
T4: 38±15 (3.9±1.5, 28±11)

T5: 49±5 (5.0±0.5, 36.2±3.6)

T6: 57±10 (5.8±1.0, 42±7)

T7: 69±15 (7.0±1.5, 51±11)

C: MT VEHICLES (OUTBACK)



B2M1765A

- | | |
|-------------------------|------------------------|
| (1) Pitching stopper | (8) Cushion D |
| (2) Spacer | (9) Center crossmember |
| (3) Cushion C | (10) Rear plate |
| (4) Front plate | (11) Front crossmember |
| (5) Damper (LTD model) | |
| (6) Rear cushion rubber | |
| (7) Rear crossmember | |

Tightening torque: N·m (kg·m, ft·lb)

T1: 7.4±2.0 (0.75±0.2, 5.4±1.4)

T2: 33±5 (3.4±0.5, 24.6±3.6)

T3: 37±10 (3.8±1.0, 27±7)

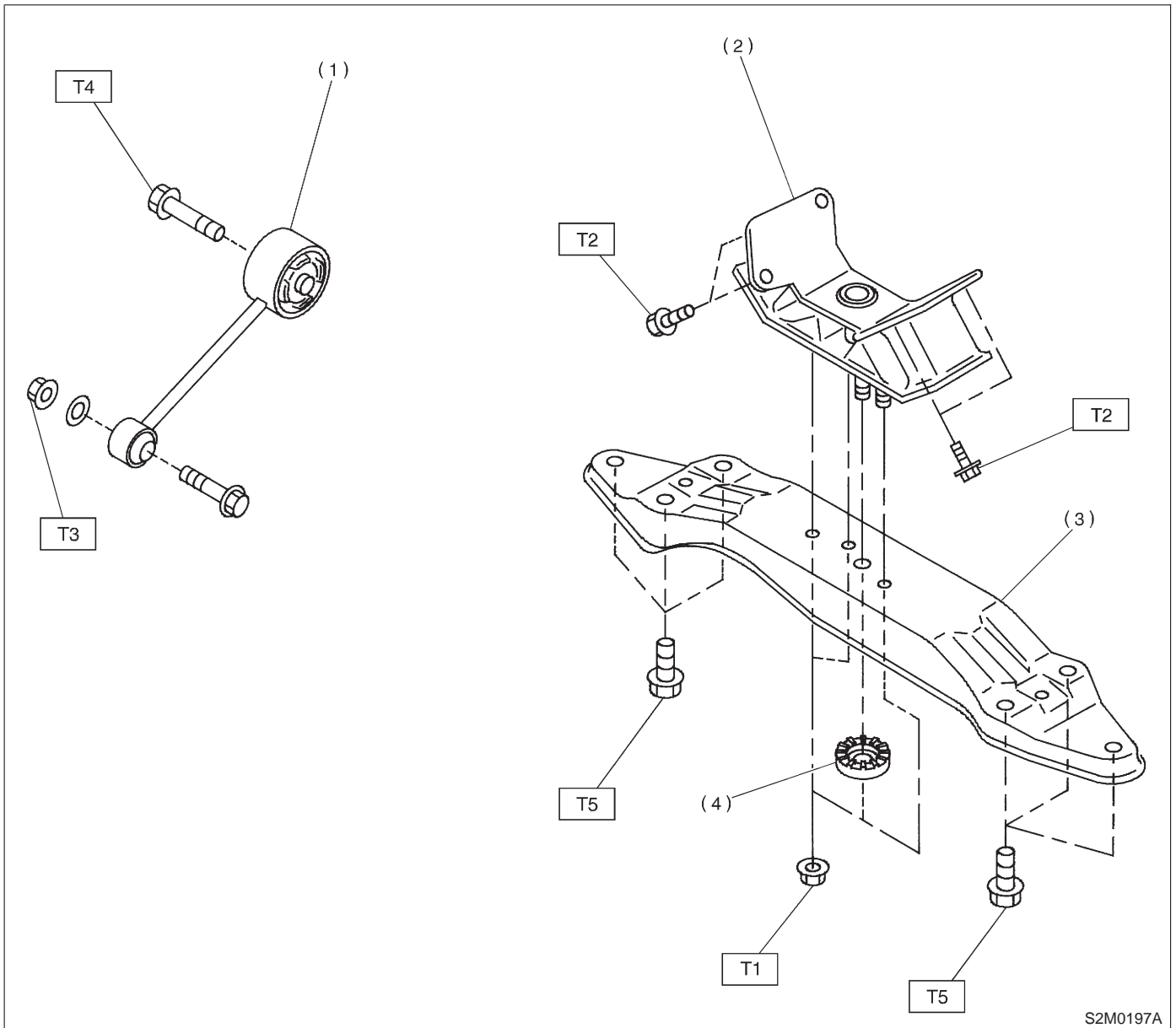
T4: 49±5 (5.0±0.5, 36.2±3.6)

T5: 57±10 (5.8±1.0, 42±7)

T6: 69±15 (7.0±1.5, 51±11)

T7: 137±20 (14±2, 101±14)

D: AT VEHICLES (OUTBACK)



- (1) Pitching stopper
- (2) Rear cushion rubber
- (3) Crossmember
- (4) Stopper

Tightening torque: N-m (kg-m, ft-lb)

T1: 37±10 (3.8±1.0, 27±7)

T2: 38±15 (3.9±1.5, 28±11)

T3: 49±5 (5.0±0.5, 36.2±3.6)

T4: 57±10 (5.8±1.0, 42±7)

T5: 69±15 (7.0±1.5, 51±11)