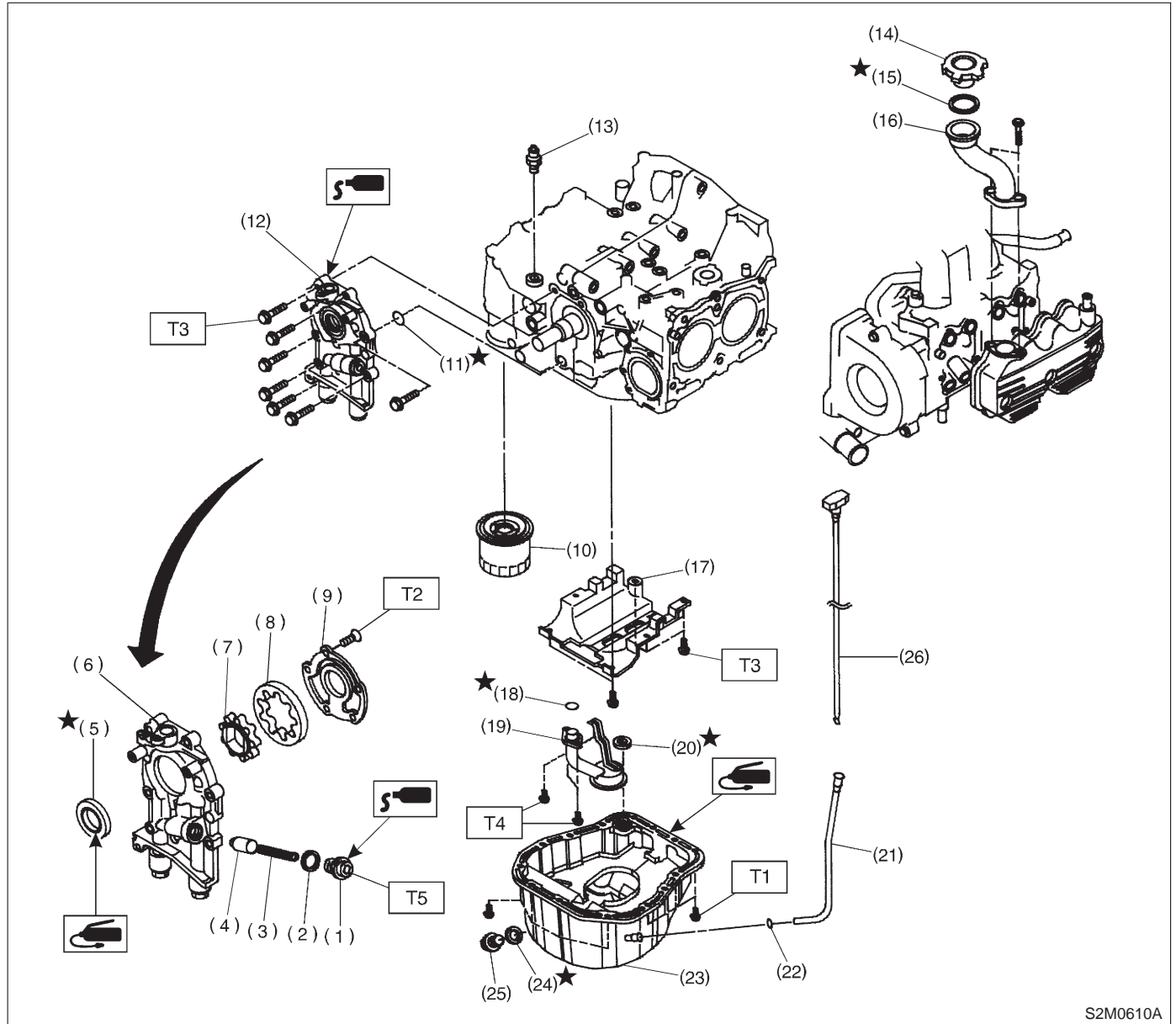


1. Lubrication System

A: 2200 cc MODEL



S2M0610A

- | | | |
|-------------------------|----------------------------|----------------------|
| (1) Plug | (13) Oil pressure switch | (25) Drain plug |
| (2) Washer | (14) Oil filler duct | (26) Oil level gauge |
| (3) Relief valve spring | (15) Baffle plate | |
| (4) Relief valve | (16) Oil strainer stay | |
| (5) Oil seal | (17) O-ring | |
| (6) Oil pump case | (18) Oil strainer | |
| (7) Inner rotor | (19) Oil level gauge guide | |
| (8) Outer rotor | (20) Oil pan | |
| (9) Oil pump cover | (21) Oil level gauge | |
| (10) Oil filter | (22) Washer | |
| (11) O-ring | (23) Drain plug | |
| (12) Oil pump ASSY | (24) Metal gasket | |

Tightening torque: N-m (kg-m, ft-lb)

T1: 5 (0.5, 3.6)

T2: 5^{+1}_{-0} (0.5^{+0.1}/₋₀, 3.6^{+0.7}/₋₀)

T3: 6.4 (0.65, 4.7)

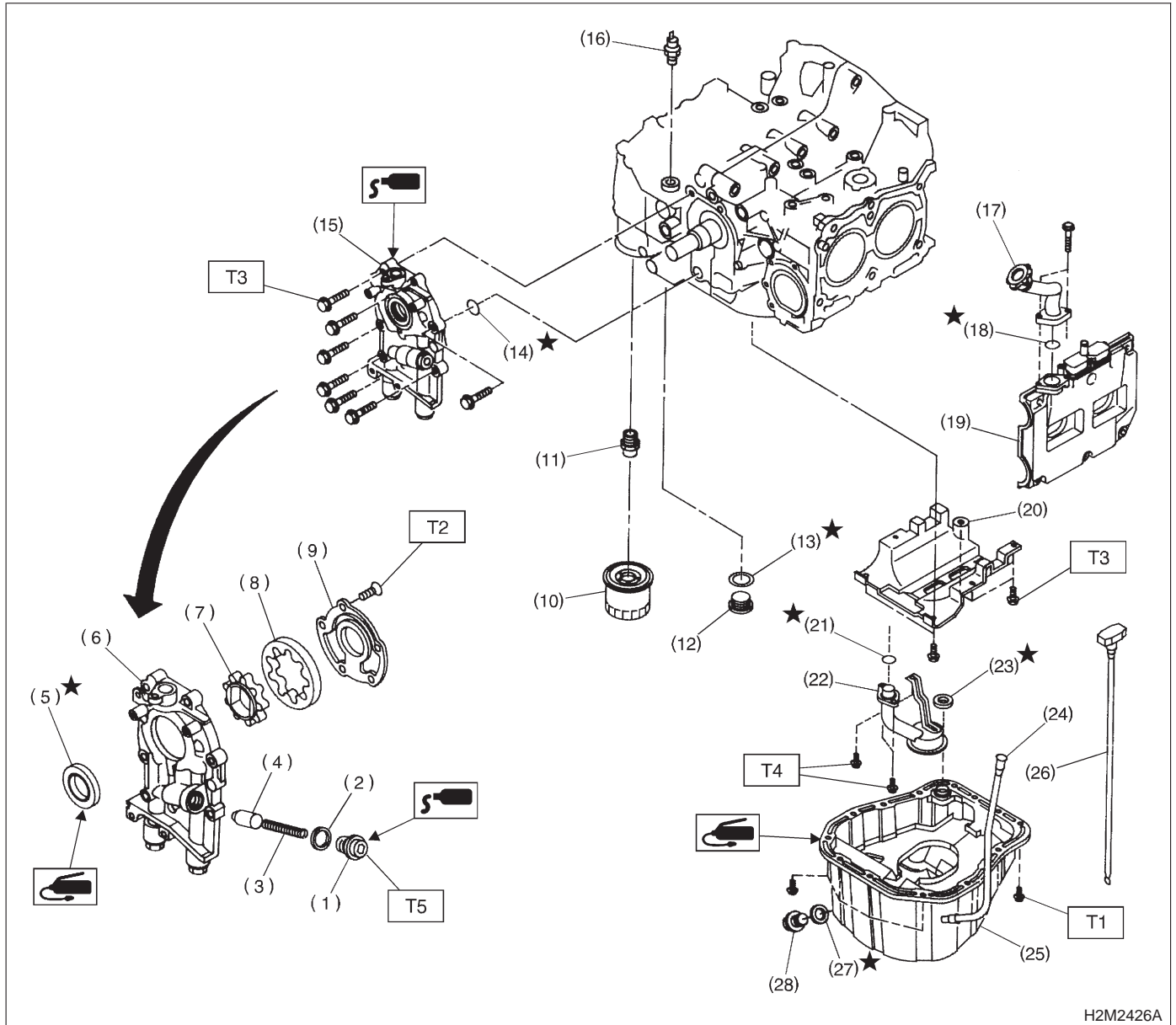
T4: 9.8 (1.0, 7.0)

T5: 44.1±3.4 (4.5±0.35, 32.5±2.5)

COMPONENT PARTS

[C1B0] 2-4
1. Lubrication System

B: 2500 cc MODEL



H2M2426A

- | | |
|-------------------------|----------------------------|
| (1) Plug | (13) Oil filter connector |
| (2) Washer | (14) O-ring |
| (3) Relief valve spring | (15) Oil pump ASSY |
| (4) Relief valve | (16) Oil pressure switch |
| (5) Oil seal | (17) Oil filler duct |
| (6) Oil pump case | (18) O-ring |
| (7) Inner rotor | (19) Cylinder head cover |
| (8) Outer rotor | (20) Baffle plate |
| (9) Oil pump cover | (21) O-ring |
| (10) Oil filter | (22) Oil strainer |
| (11) Plug | (23) Gasket |
| (12) Gasket | (24) Oil level gauge guide |

- | |
|----------------------|
| (25) Oil pan |
| (26) Oil level gauge |
| (27) Metal gasket |
| (28) Drain plug |

Tightening torque: N-m (kg-m, ft-lb)

T1: 5 (0.5, 3.6)

T2: 5^{+1}_{-0} (0.5^{+0.1}/₋₀, 3.6^{+0.7}/₋₀)

T3: 6.4 (0.65, 4.7)

T4: 10 (1.0, 7.0)

T5: 44.1±3.4 (4.5±0.35, 32.5±2.5)