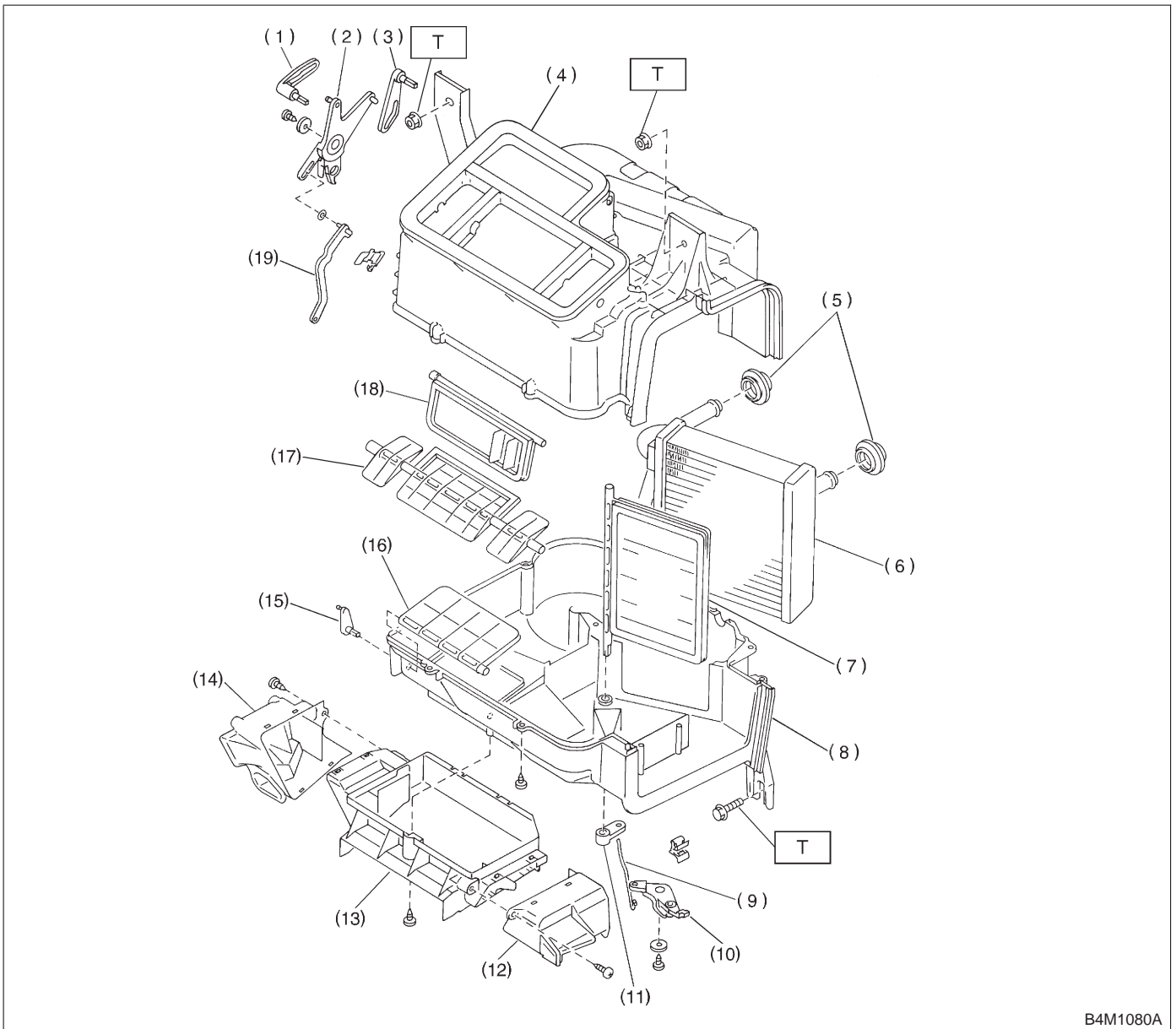


2. Heater Unit



B4M1080A

- (1) Vent lever
- (2) Side link
- (3) DEF. lever
- (4) Heater case upper
- (5) Heater grommet
- (6) Heater core
- (7) Mix door
- (8) Heater case lower

- (9) Mix rod
- (10) Mix link
- (11) Mix lever
- (12) Foot duct (RH)
- (13) Foot duct (CTR)
- (14) Foot duct (LH)
- (15) Foot lever lower
- (16) Foot door

- (17) Vent door
- (18) DEF. door
- (19) Foot lever upper

Tightening torque: N-m (kg-m, ft-lb)
T: 7.35±1.96 (0.750±0.200,
5.421±1.446)