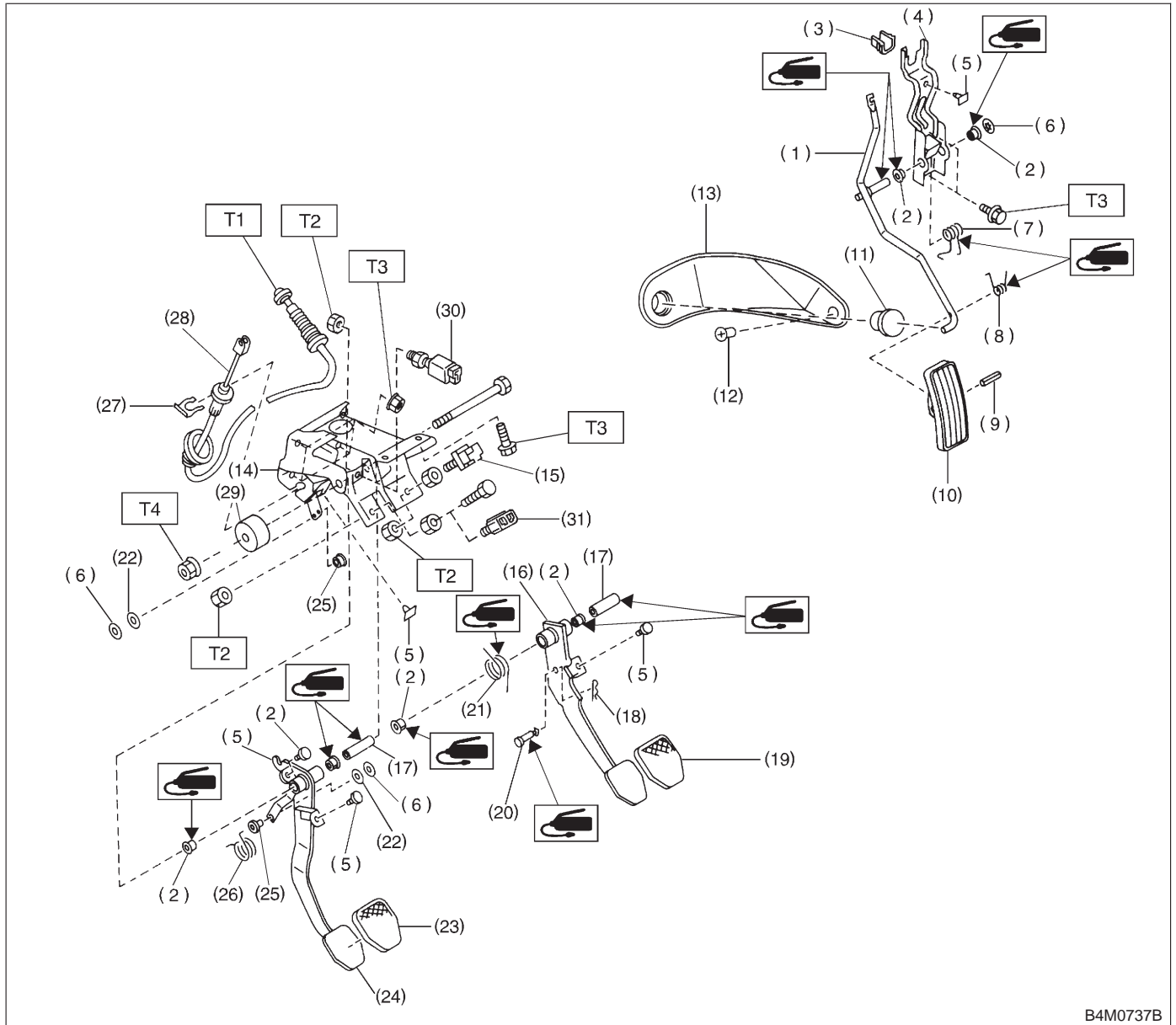


1. Pedal

A: MT MODEL

1. EXCEPT 2500 cc MODEL



B4M0737B

- |                              |                         |  |
|------------------------------|-------------------------|--|
| (1) Accelerator pedal        | (14) Pedal bracket      | (27) Clutch cable clamp                  |
| (2) Bushing                  | (15) Stop light switch  | (28) Clutch cable                        |
| (3) Holder                   | (16) Brake pedal        | (29) Mass damper                         |
| (4) Accelerator bracket      | (17) Spacer             | (30) Clutch switch (Starter interlock)   |
| (5) Stopper                  | (18) Snap pin           | (31) Clutch switch (With cruise control) |
| (6) Clip                     | (19) Brake pedal pad    |  |
| (7) Accelerator spring       | (20) Clevis pin         |  |
| (8) Accelerator pedal spring | (21) Brake pedal spring |  |
| (9) Spring pin               | (22) Washer             |  |
| (10) Accelerator pedal pad   | (23) Clutch pedal pad   |  |
| (11) Accelerator stopper     | (24) Clutch pedal       |  |
| (12) Clip                    | (25) Bushing assist     |  |
| (13) Accelerator plate       | (26) Spring assist      |  |

**Tightening torque: N-m (kg-m, ft-lb)**

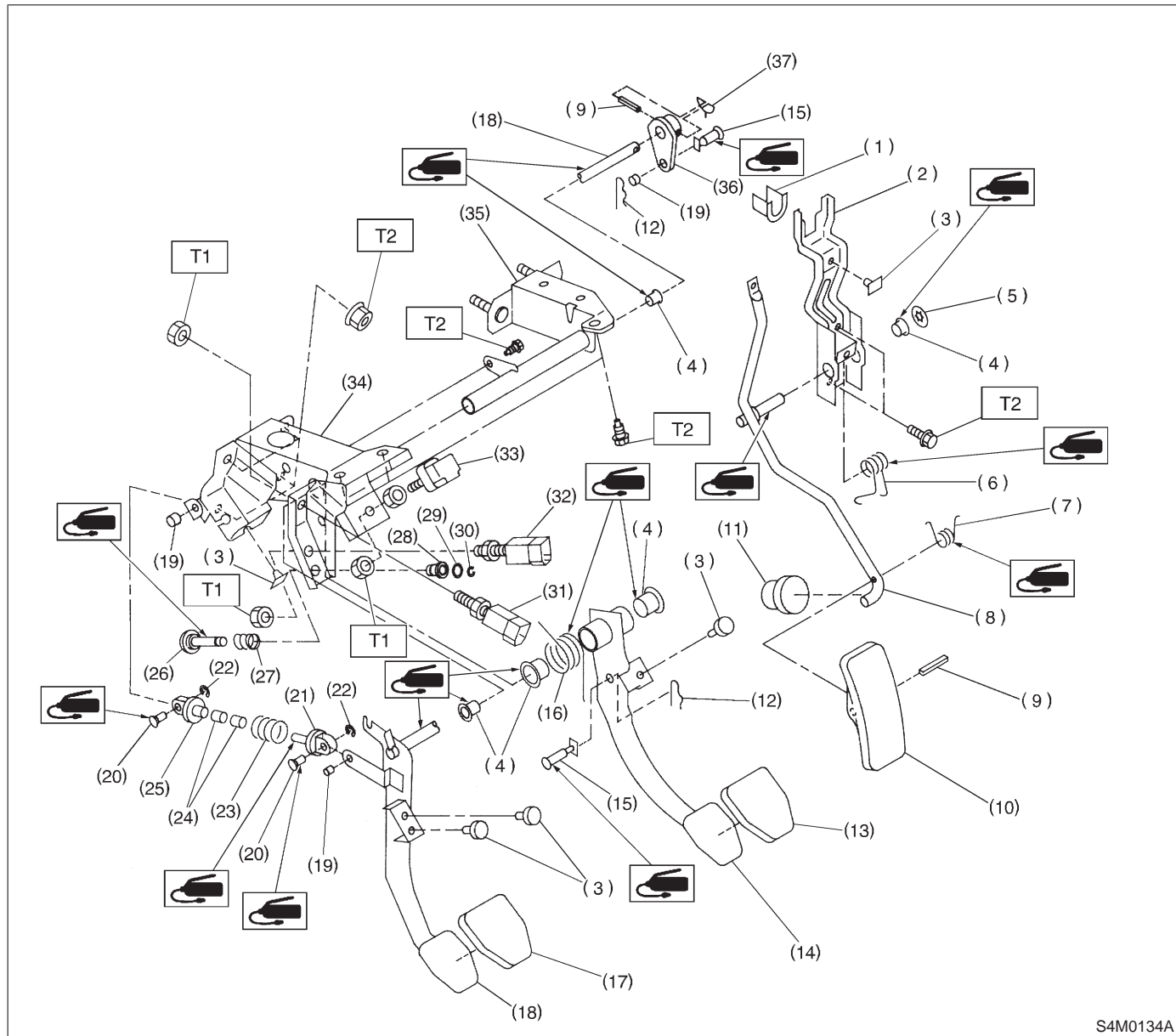
**T1: 5.9±1.5 (0.60±0.15, 4.3±1.1)**

**T2: 8±2 (0.8±0.2, 5.8±1.4)**

**T3: 18±5 (1.8±0.5, 13.0±3.6)**

**T4: 29±7 (3.0±0.7, 21.7±5.1)**

2. 2500 cc MODEL



S4M0134A

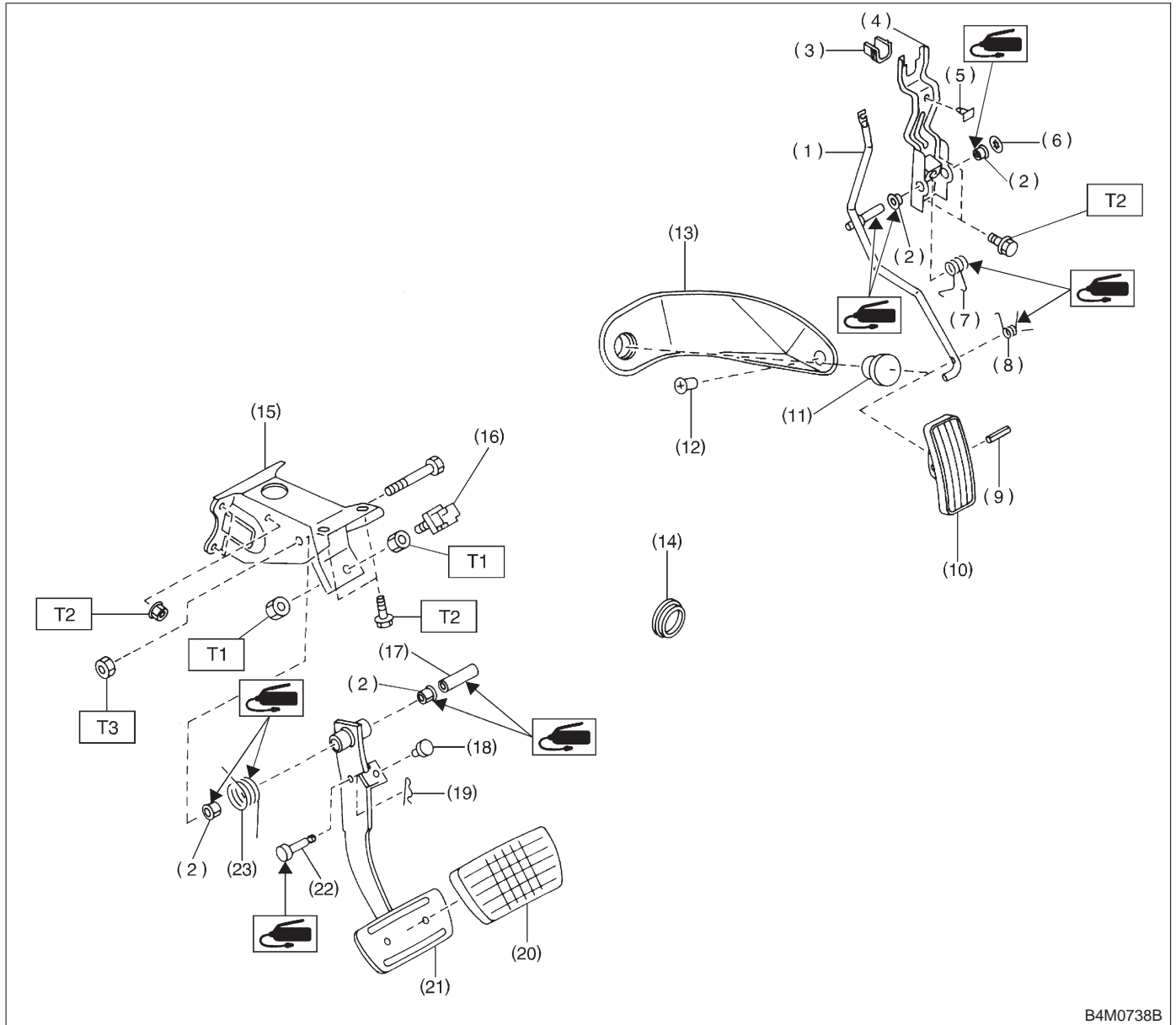
- |                              |                         |  |
|------------------------------|-------------------------|--|
| (1) Holder                   | (16) Brake pedal spring | (31) Clutch switch (Starter interlock)   |
| (2) Accelerator bracket      | (17) Clutch pedal pad   | (32) Clutch switch (With cruise control) |
| (3) Stopper                  | (18) Clutch pedal       | (33) Stop light switch                   |
| (4) Bushing                  | (19) Bushing C          | (34) Pedal bracket                       |
| (5) Clip                     | (20) Clutch clevis pin  | (35) Clutch master cylinder bracket      |
| (6) Accelerator spring       | (21) Assist rod A       | (36) Lever                               |
| (7) Accelerator pedal spring | (22) Clip               | (37) Lock wire                           |
| (8) Accelerator pedal        | (23) Assist spring      |  |
| (9) Spring pin               | (24) Assist bushing     |  |
| (10) Accelerator pedal pad   | (25) Assist rod B       |  |
| (11) Accelerator stopper     | (26) Rod S              |  |
| (12) Snap pin                | (27) Spring S           |  |
| (13) Brake pedal pad         | (28) Bushing S          |  |
| (14) Brake pedal             | (29) O-ring             |  |
| (15) Clevis pin              | (30) Clip               |  |

**Tightening torque: N-m (kg-m, ft-lb)**

**T1: 8±2 (0.8±0.2, 5.8±1.4)**

**T2: 18±5 (1.8±0.5, 13.0±3.6)**

## B: AT MODEL



B4M0738B

- |                              |                          |
|------------------------------|--------------------------|
| (1) Accelerator pedal        | (11) Accelerator stopper |
| (2) Bushing                  | (12) Clip                |
| (3) Holder                   | (13) Accelerator plate   |
| (4) Accelerator bracket      | (14) Plug                |
| (5) Stopper                  | (15) Pedal bracket       |
| (6) Clip                     | (16) Stop light switch   |
| (7) Accelerator spring       | (17) Spacer              |
| (8) Accelerator pedal spring | (18) Stopper             |
| (9) Spring pin               | (19) Snap pin            |
| (10) Accelerator pedal pad   | (20) Brake pedal pad     |

- |                         |
|-------------------------|
| (21) Brake pedal        |
| (22) Clevis pin         |
| (23) Brake pedal spring |

**Tightening torque: N-m (kg-m, ft-lb)**

**T1: 8±2 (0.8±0.2, 5.8±1.4)**

**T2: 18±5 (1.8±0.5, 13.0±3.6)**

**T3: 29±7 (3.0±0.7, 21.7±5.1)**