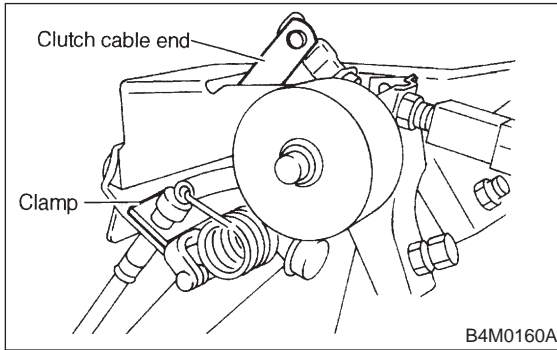


2. Clutch Cable

A: REMOVAL

- 1) Disconnect clutch cable from release lever.
- 2) Depress clutch pedal to the floor.
- 3) Remove clutch cable clamp from pedal bracket.



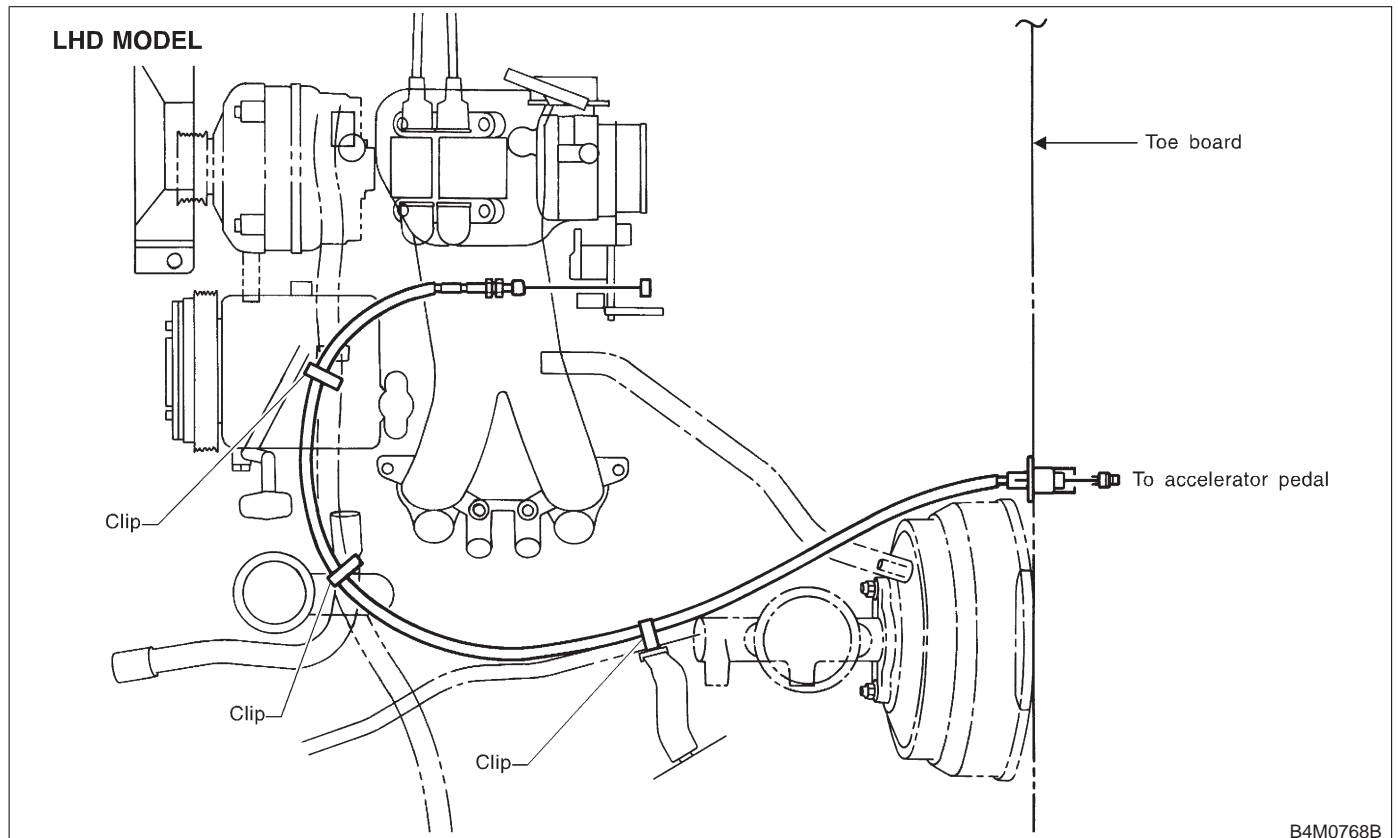
- 4) Disconnect clutch cable from pedal bracket and pedal end.
- 5) Remove clutch cable from body.

CAUTION:

Before removing clutch cable from toe board, remove grommet. Slowly remove clutch cable, being careful not to scratch it.

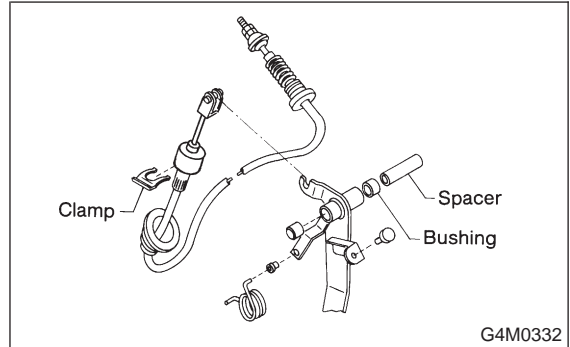
3. Accelerator Cable

A: REMOVAL

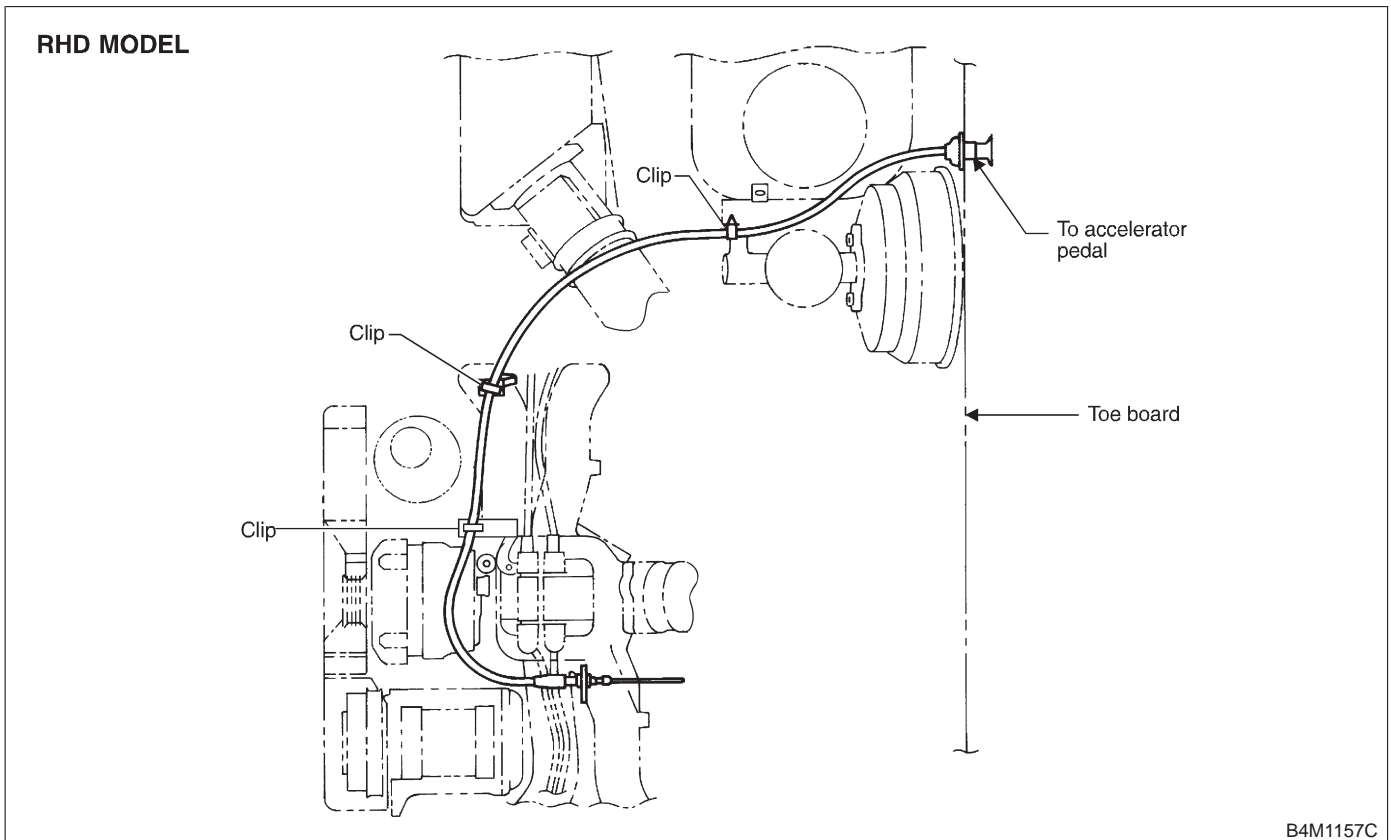


B: INSTALLATION

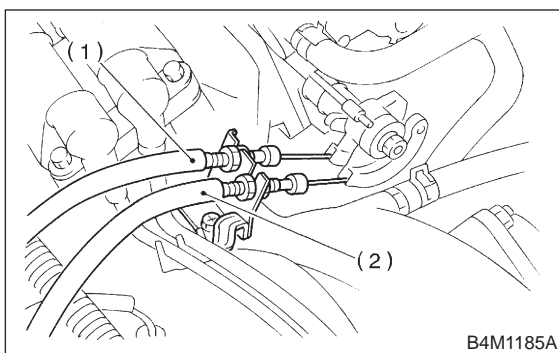
- 1) Clean clutch pedal fitting hole, and apply grease. Connect clutch cable to clutch pedal.



- 2) Fit clutch pedal to pedal bolt, and connect clutch cable to bracket with clamp.
- 3) Connect clutch cable end to pedal end.
- 4) Connect clutch cable from release lever.
- 5) Install grommet to toe board.
- 6) Adjust after cable installation. <Ref. to 4-5 [W1A2].>



- 1) Disconnect accelerator cable from connector inside engine compartment first.
- 2) Remove lock nut from accelerator cable bracket.
- 3) Separate accelerator cable (1) from bracket, then unlock inner cable.



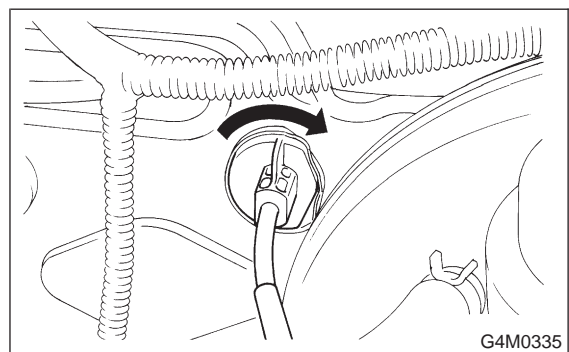
- 4) Remove cable end from throttle cam using your fingertips.

CAUTION:

Be careful not to bend inner cable.

- 5) Disconnect cable end from accelerator cable bracket inside driver compartment.
- 6) Remove clip inside engine compartment.

- 7) Working inside engine compartment, remove the casing cap out of the toe board by turning it clockwise.



- 8) Pull out the cable from the toe board hole.

B: INSTALLATION

- 1) Installation is in the reverse order of removal procedures.

CAUTION:

- **Be careful not to kink accelerator cable.**

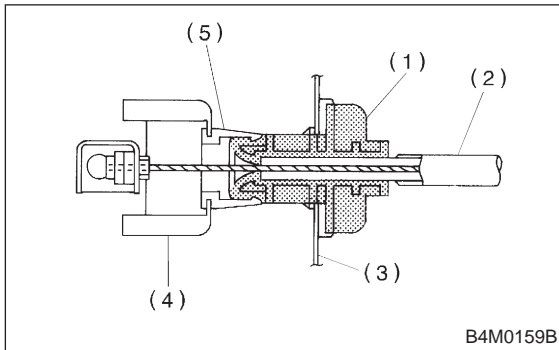
4-5 [W3B0]

3. Accelerator Cable

SERVICE PROCEDURE

- Make sure that holder and casing cap are securely connected.

2) Adjustment after cable installation <Ref. to 4-5 [W1A3].>



- (1) Casing cap
- (2) Accelerator cable
- (3) Toe board
- (4) Accelerator pedal bracket
- (5) Holder