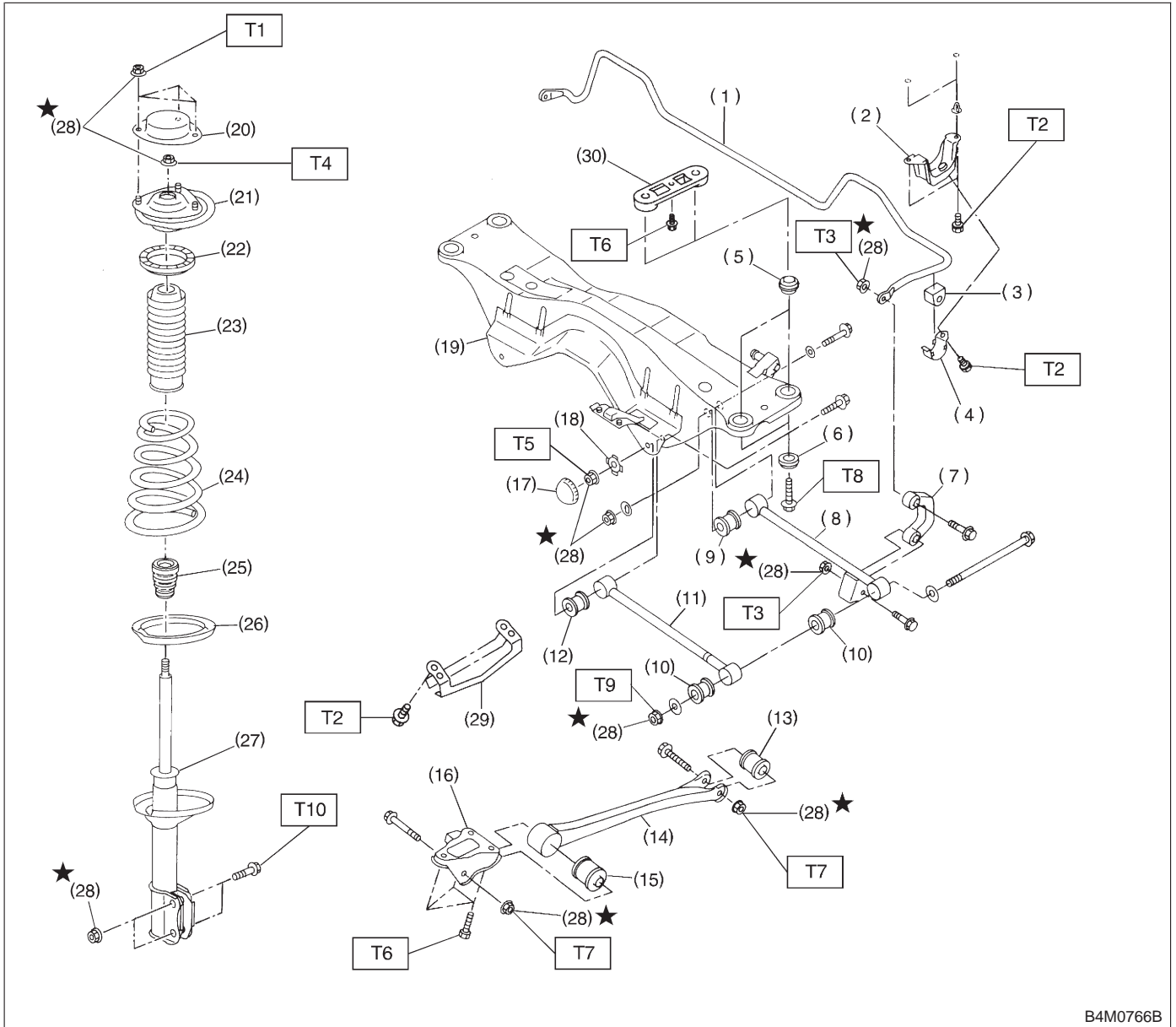


2. Rear Suspension

A: AWD MODEL



B4M0766B

- |                                  |                            |   |
|----------------------------------|----------------------------|---|
| (1) Stabilizer                   | (16) Trailing link bracket | (29) Crossmember reinforcement lower (Sedan model and except SUS model) |
| (2) Stabilizer bracket           | (17) Cap (Protection)      | (30) Adapter rear crossmember (SUS & OUTBACK model)                     |
| (3) Stabilizer bushing           | (18) Washer                |   |
| (4) Clamp                        | (19) Rear crossmember      |   |
| (5) Floating bushing             | (20) Strut mount cap       |   |
| (6) Stopper                      | (21) Strut mount           |   |
| (7) Stabilizer link              | (22) Rubber seat upper     |   |
| (8) Rear lateral link            | (23) Dust cover            |   |
| (9) Bushing (C)                  | (24) Coil spring           |   |
| (10) Bushing (A)                 | (25) Helper                |   |
| (11) Front lateral link          | (26) Rubber seat lower     |   |
| (12) Bushing (B)                 | (27) Damper strut          |   |
| (13) Trailing link rear bushing  | (28) Self-locking nut      |   |
| (14) Trailing link               |                            |   |
| (15) Trailing link front bushing |                            |   |

---

**Tightening torque: N·m (kg-m, ft-lb)**

**T1: 20±6 (2.0±0.6, 14.5±4.3)**

**T2: 25±7 (2.5±0.7, 18.1±5.1)**

**T3: 44±6 (4.5±0.6, 32.5±4.3)**

**T4: 59±10 (6.0±1.0, 43±7)**

**T5: 98±15 (10.0±1.5, 72±11)**

**T6: 98±20 (10.0±2.0, 72±14)**

**T7: 113±15 (11.5±1.5, 83±11)**

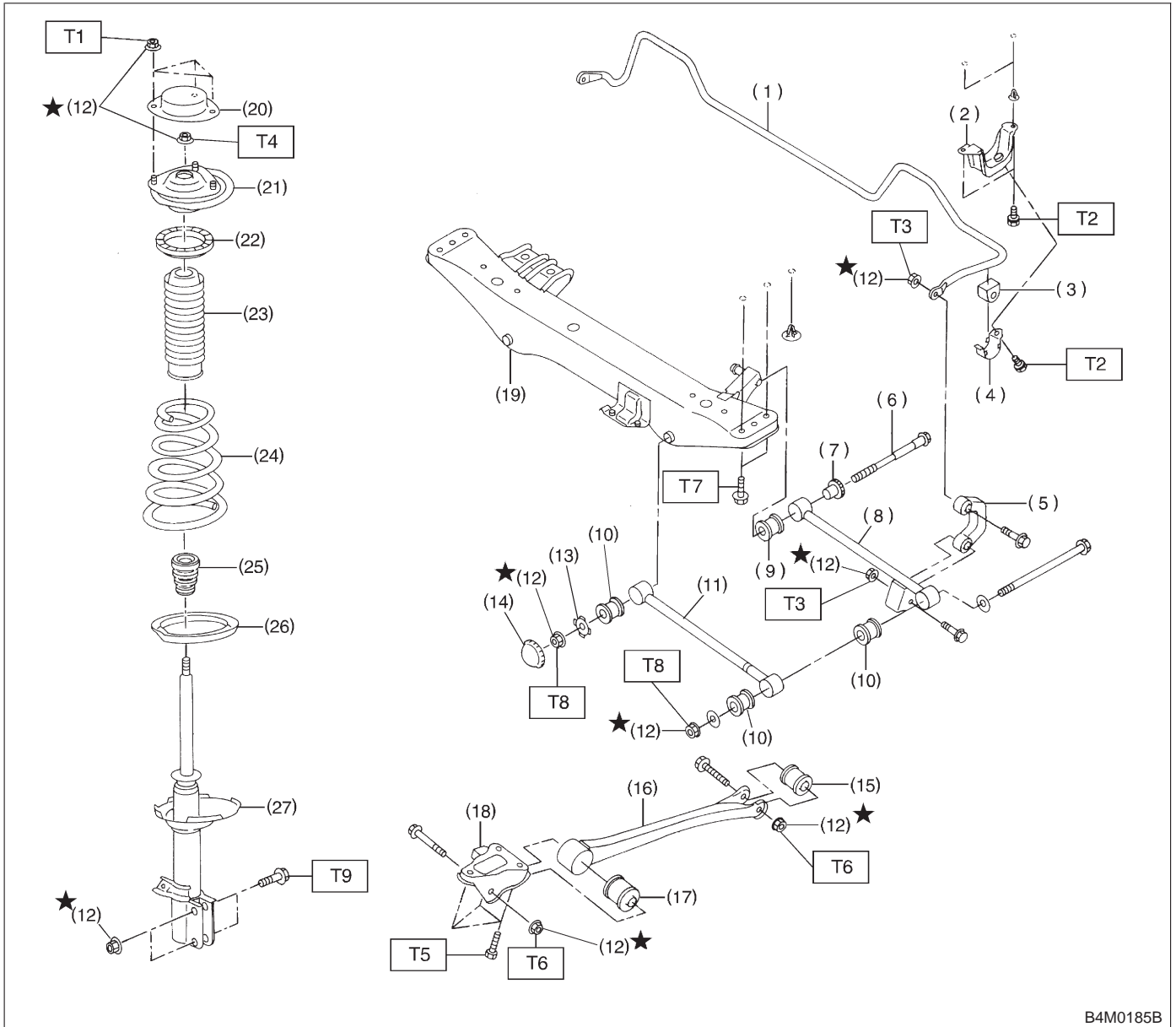
**T8: 127±20 (13.0±2.0, 94±14)**

**T9: 137±20 (14.0±2.0, 101±14)**

**T10: 196<sup>+39</sup>/<sub>-10</sub> (20.0<sup>+4.0</sup>/<sub>-1.0</sub>, 145<sup>+29</sup>/<sub>-7</sub>)**

---

B: FWD MODEL



B4M0185B

- |                         |                                  |
|-------------------------|----------------------------------|
| (1) Stabilizer          | (15) Trailing link rear bushing  |
| (2) Stabilizer bracket  | (16) Trailing link               |
| (3) Stabilizer bushing  | (17) Trailing link front bushing |
| (4) Clamp               | (18) Trailing link bracket       |
| (5) Stabilizer link     | (19) Crossmember                 |
| (6) Adjusting bolt      | (20) Strut mount cap             |
| (7) Adjusting wheel     | (21) Strut mount                 |
| (8) Rear lateral link   | (22) Rubber seat upper           |
| (9) Bushing (D)         | (23) Dust cover                  |
| (10) Bushing (A)        | (24) Coil spring                 |
| (11) Front lateral link | (25) Helper                      |
| (12) Self-locking nut   | (26) Rubber seat lower           |
| (13) Washer             | (27) Damper strut                |
| (14) Cap (Protection)   |                                  |

**Tightening torque: N·m (kg·m, ft·lb)**

- T1: 20±6 (2.0±0.6, 14.5±4.3)**  
**T2: 25±7 (2.5±0.7, 18.1±5.1)**  
**T3: 44±6 (4.5±0.6, 32.5±4.3)**  
**T4: 59±10 (6.0±1.0, 43±7)**  
**T5: 98±20 (10.0±2.0, 72±14)**  
**T6: 113±15 (11.5±1.5, 83±11)**  
**T7: 127±20 (13.0±2.0, 94±14)**  
**T8: 137±20 (14.0±2.0, 101±14)**  
**T9: 196<sup>+39</sup>/<sub>-10</sub> (20.0<sup>+4.0</sup>/<sub>-1.0</sub>, 145<sup>+29</sup>/<sub>-7</sub>)**