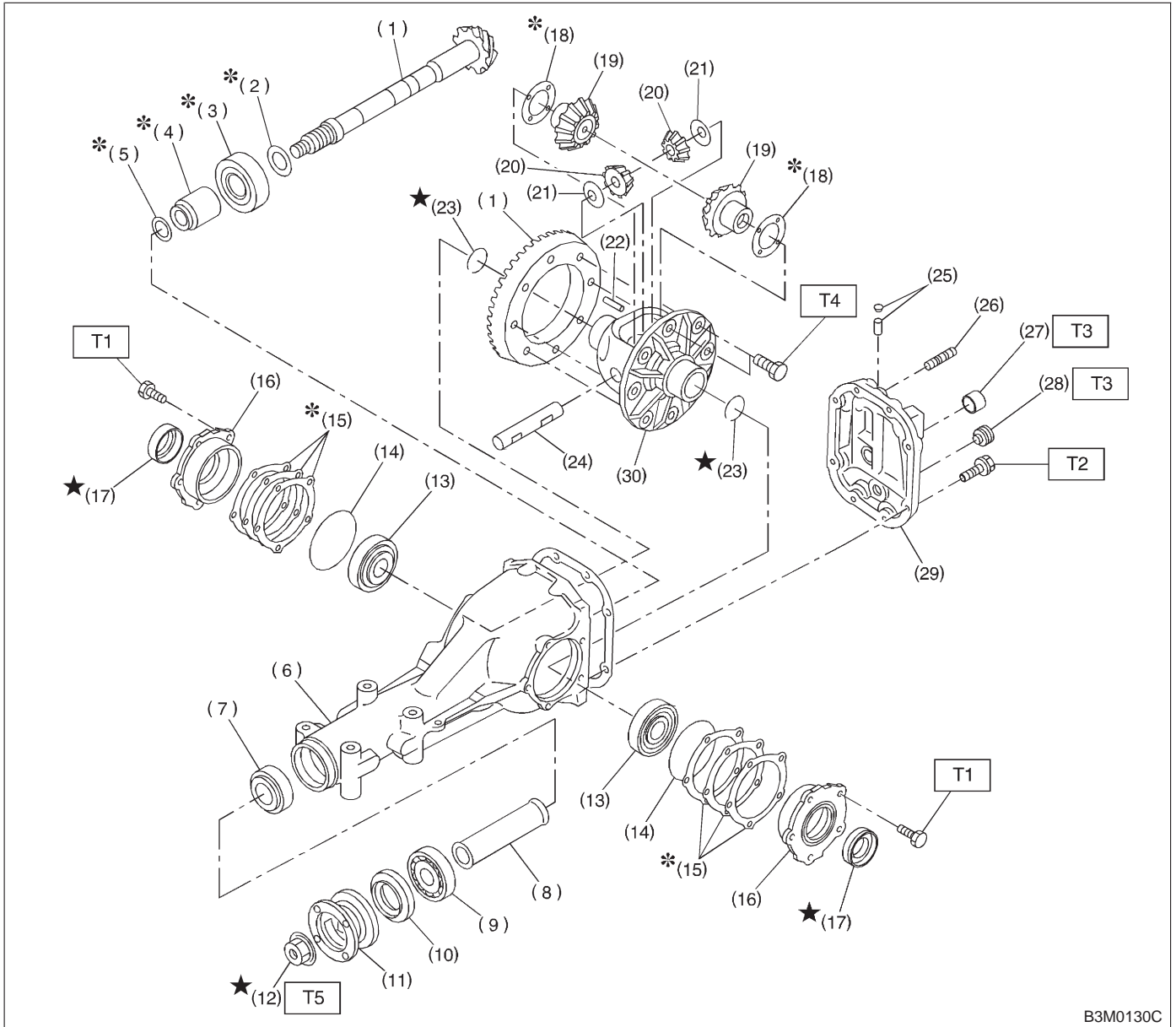


2. Rear Differential Assembly

A: T-TYPE

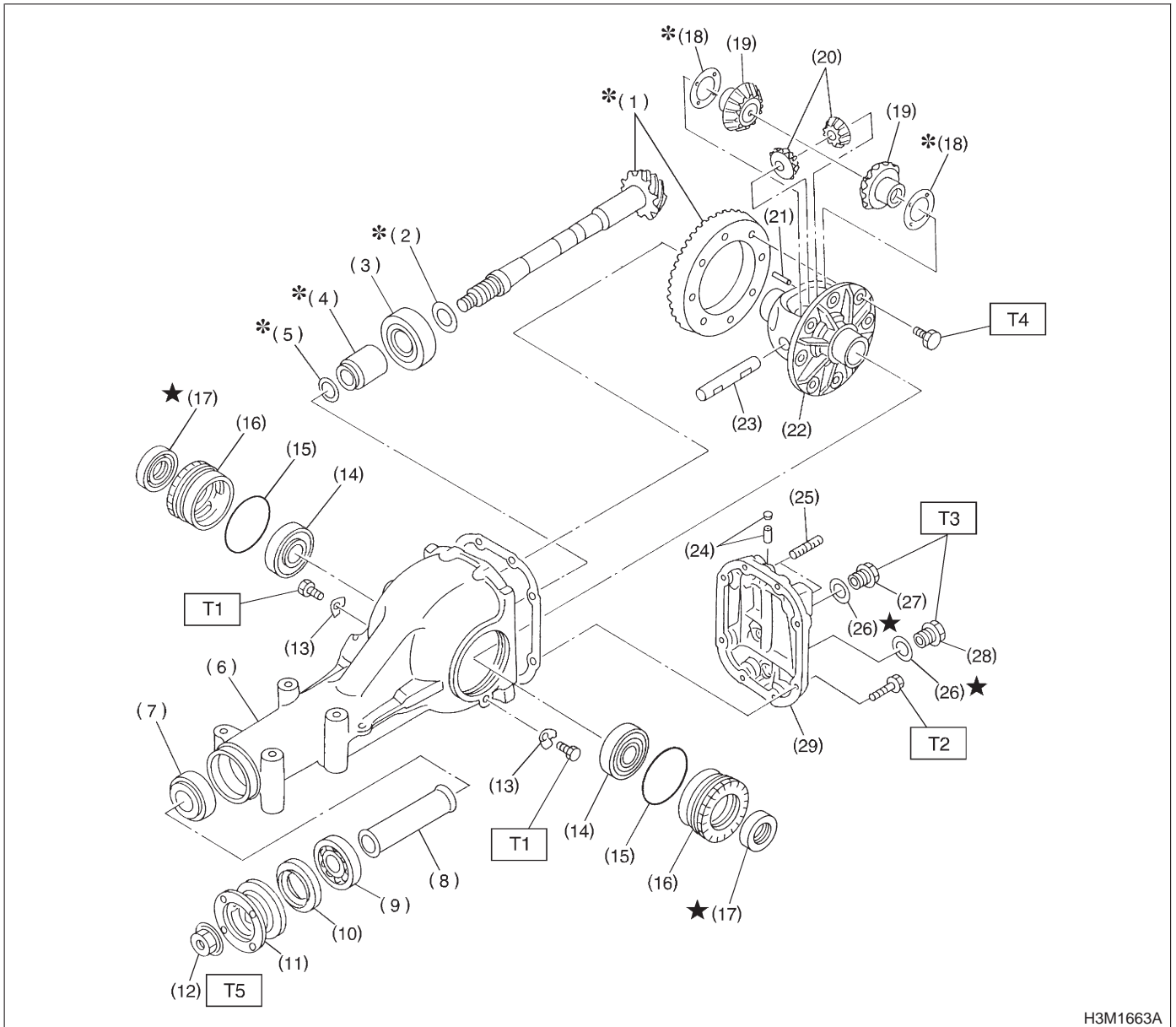


B3M0130C

- |                                      |                                 |                        |
|--------------------------------------|---------------------------------|------------------------|
| (1) Pinion crown gear set            | (14) O-ring                     | (28) Oil drain plug    |
| (2) Pinion height adjusting washer   | (15) Side bearing retainer shim | (29) Rear cover        |
| (3) Rear bearing                     | (16) Side bearing retainer      | (30) Differential case |
| (4) Bearing preload adjusting spacer | (17) Side oil seal              |                        |
| (5) Bearing preload adjusting washer | (18) Side gear thrust washer    |                        |
| (6) Differential carrier             | (19) Side gear                  |                        |
| (7) Front bearing                    | (20) Pinion mate gear           |                        |
| (8) Spacer                           | (21) Pinion mate gear washer    |                        |
| (9) Pilot bearing                    | (22) Pinion shaft lock pin      |                        |
| (10) Front oil seal                  | (23) Circlip                    |                        |
| (11) Companion flange                | (24) Pinion mate shaft          |                        |
| (12) Self-locking nut                | (25) Air breather cap           |                        |
| (13) Side bearing                    | (26) Stud bolt                  |                        |
|                                      | (27) Oil filler plug            |                        |

**Tightening torque: N-m (kg-m, ft-lb)**  
**T1: 10.3±1.5 (1.05±0.15, 7.6±1.1)**  
**T2: 29.4±4.9 (3.00±0.50, 21.7±3.6)**  
**T3: 44.1±3.9 (4.50±0.40, 32.5±2.9)**  
**T4: 103.0±9.8 (10.50±1.00, 75.9±7.2)**  
**T5: 181.4±14.7 (18.50±1.50, 133.8±10.8)**

B: VA-TYPE



H3M1663A

- (1) Pinion crown gear set
- (2) Pinion height adjusting shim
- (3) Rear bearing
- (4) Bearing preload adjusting spacer
- (5) Bearing preload adjusting washer
- (6) Differential carrier
- (7) Front bearing
- (8) Collar
- (9) Pilot bearing
- (10) Front oil seal
- (11) Companion flange
- (12) Self-locking nut

- (13) Lock plate
- (14) Side bearing
- (15) O-ring
- (16) Axle shaft holder
- (17) Side oil seal
- (18) Side gear thrust washer
- (19) Side gear
- (20) Pinion mate gear
- (21) Pinion shaft lock pin
- (22) Differential case
- (23) Pinion mate shaft
- (24) Air breather cap
- (25) Stud bolt

- (26) Gasket
- (27) Oil filler plug
- (28) Oil drain plug
- (29) Rear cover

**Tightening torque: N-m (kg-m, ft-lb)**

**T1: 25±3 (2.5±0.3, 18.1±2.2)**

**T2: 25±2 (2.5±0.2, 18.1±1.4)**

**T3: 34±4 (3.5±0.4, 25.3±2.9)**

**T4: 62±5 (6.3±0.5, 45.6±3.6)**

**T5: 188±26 (19.2±2.7, 139±20)**