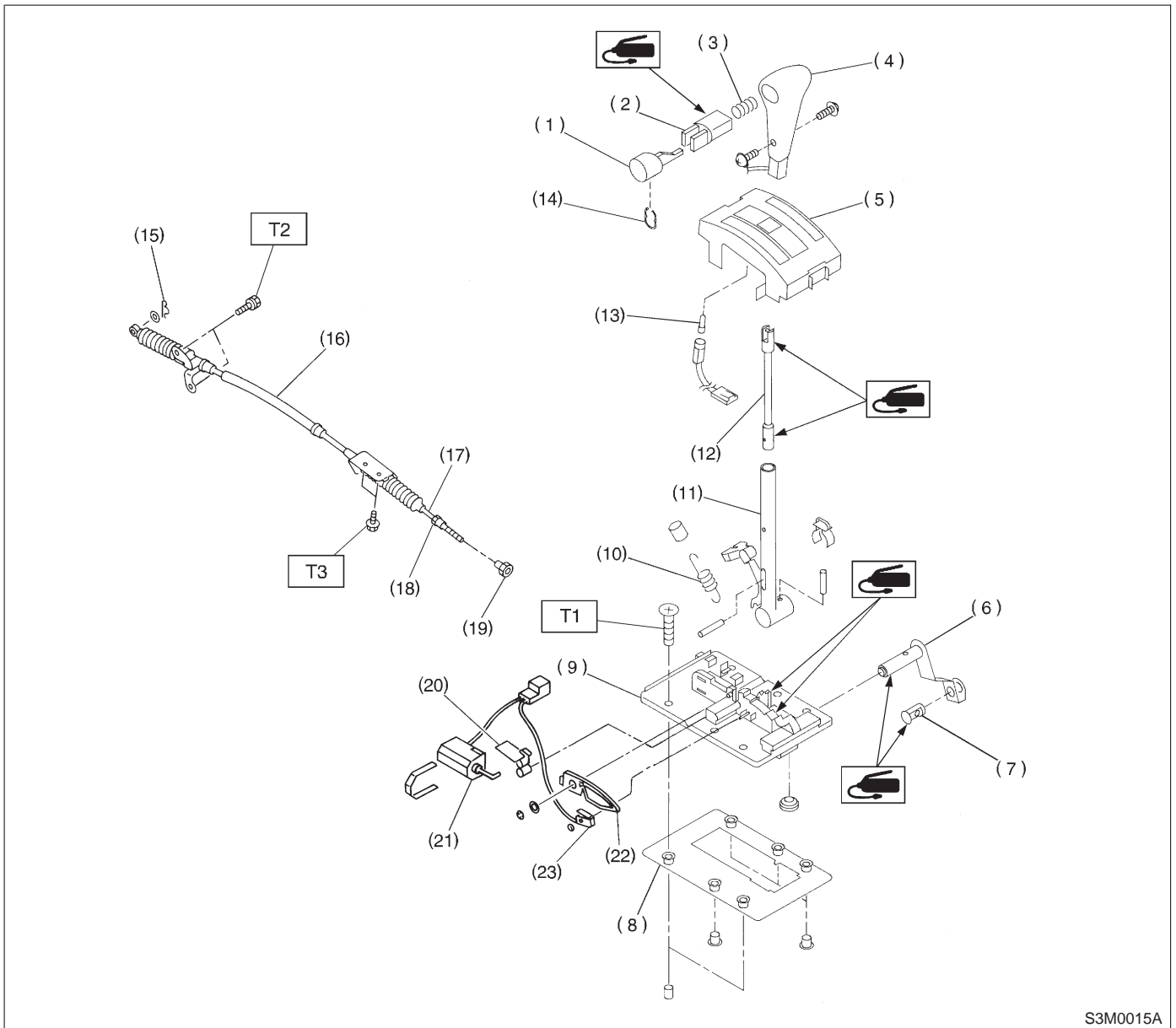


2. Automatic Transmission



S3M0015A

- |                          |                           |                          |
|--------------------------|---------------------------|--------------------------|
| (1) Button A             | (11) Selector lever upper | (21) Shift-lock solenoid |
| (2) Button B             | (12) Rod                  | (22) Lock arm            |
| (3) Spring (button)      | (13) Indicator light bulb | (23) "P" position switch |
| (4) Grip                 | (14) Retainer spring      |                          |
| (5) Indicator cover      | (15) Snap pin             |                          |
| (6) Selector lever lower | (16) Outer cable          |                          |
| (7) Pin                  | (17) Inner cable          |                          |
| (8) Packing              | (18) Nut (front)          |                          |
| (9) Plate                | (19) Nut (rear)           |                          |
| (10) Detent spring       | (20) Lock plate           |                          |

**Tightening torque: N-m (kg-m, ft-lb)**

**T1: 5.9±1.5 (0.6±0.15, 4.3±1.1)**

**T2: 12±3 (1.2±0.3, 8.7±2.2)**

**T3: 25±7 (2.5±0.7, 18.1±5.1)**