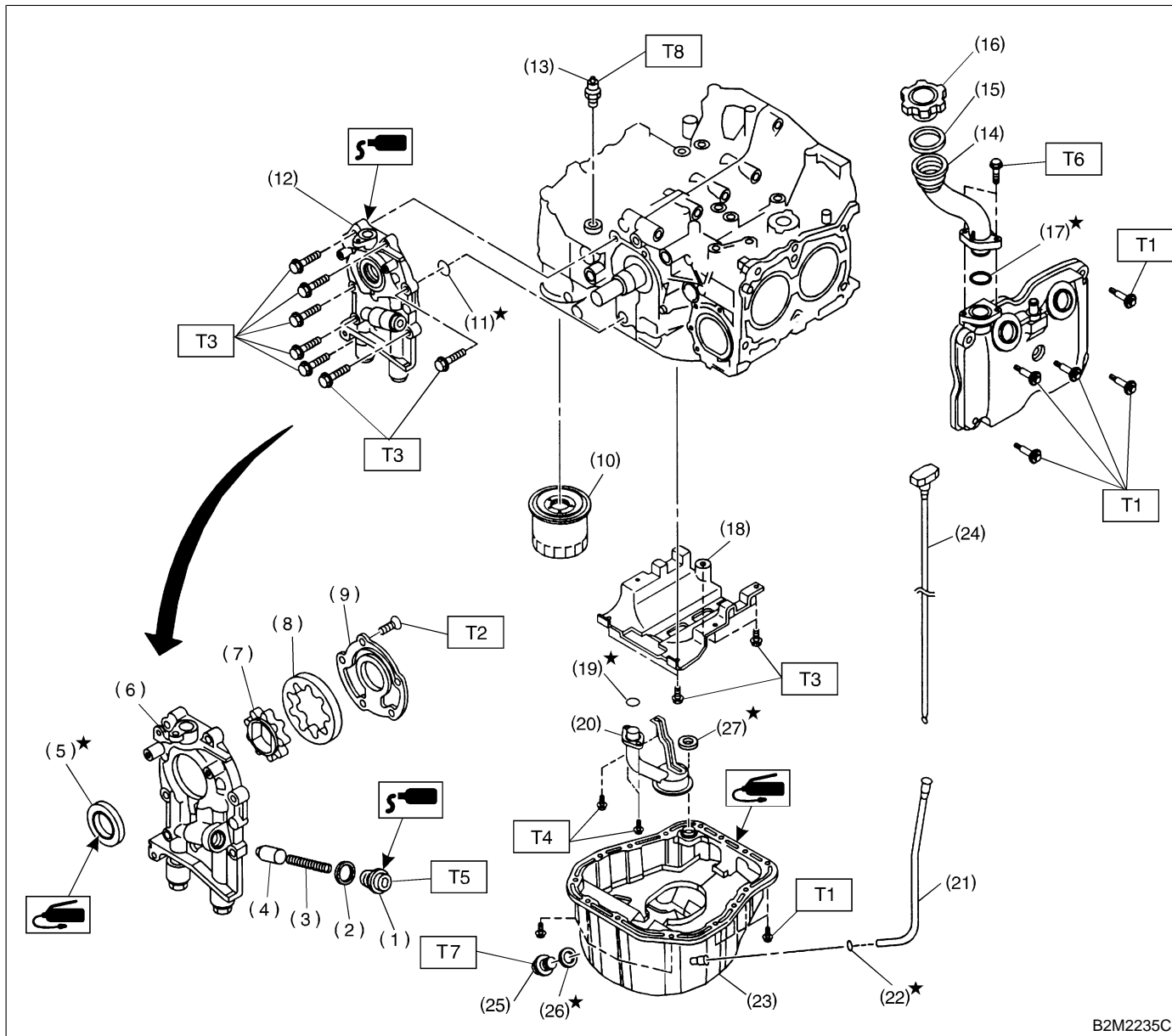


1. Lubrication System



B2M2235C

- | | |
|--------------------------|----------------------------|
| (1) Plug | (14) Oil filler duct |
| (2) Washer | (15) O-ring |
| (3) Relief valve spring | (16) Oil filler cap |
| (4) Relief valve | (17) O-ring |
| (5) Oil seal | (18) Baffle plate |
| (6) Oil pump case | (19) O-ring |
| (7) Inner rotor | (20) Oil strainer |
| (8) Outer rotor | (21) Oil level gauge guide |
| (9) Oil pump cover | (22) O-ring |
| (10) Oil filter | (23) Oil pan |
| (11) O-ring | (24) Oil level gauge |
| (12) Oil pump ASSY | (25) Drain plug |
| (13) Oil pressure switch | (26) Metal gasket |

- (27) Gasket

Tightening torque: N-m (kg-m, ft-lb)

T1: 5 (0.5, 3.6)

T2: 5^{+1}_{-0} (0.5^{+0.1}/₋₀, 3.6^{+0.7}/₋₀)

T3: 6.4 (0.65, 4.7)

T4: 10 (1.0, 7.0)

T5: 44.1 ± 3.4 (4.5 \pm 0.35, 32.5 \pm 2.5)

T6: 6.4 ± 0.5 (0.65 \pm 0.05, 4.7 \pm 0.4)

T7: 44 (4.5, 33)

T8: 25 ± 3 (2.5 \pm 0.3, 18.1 \pm 2.2)