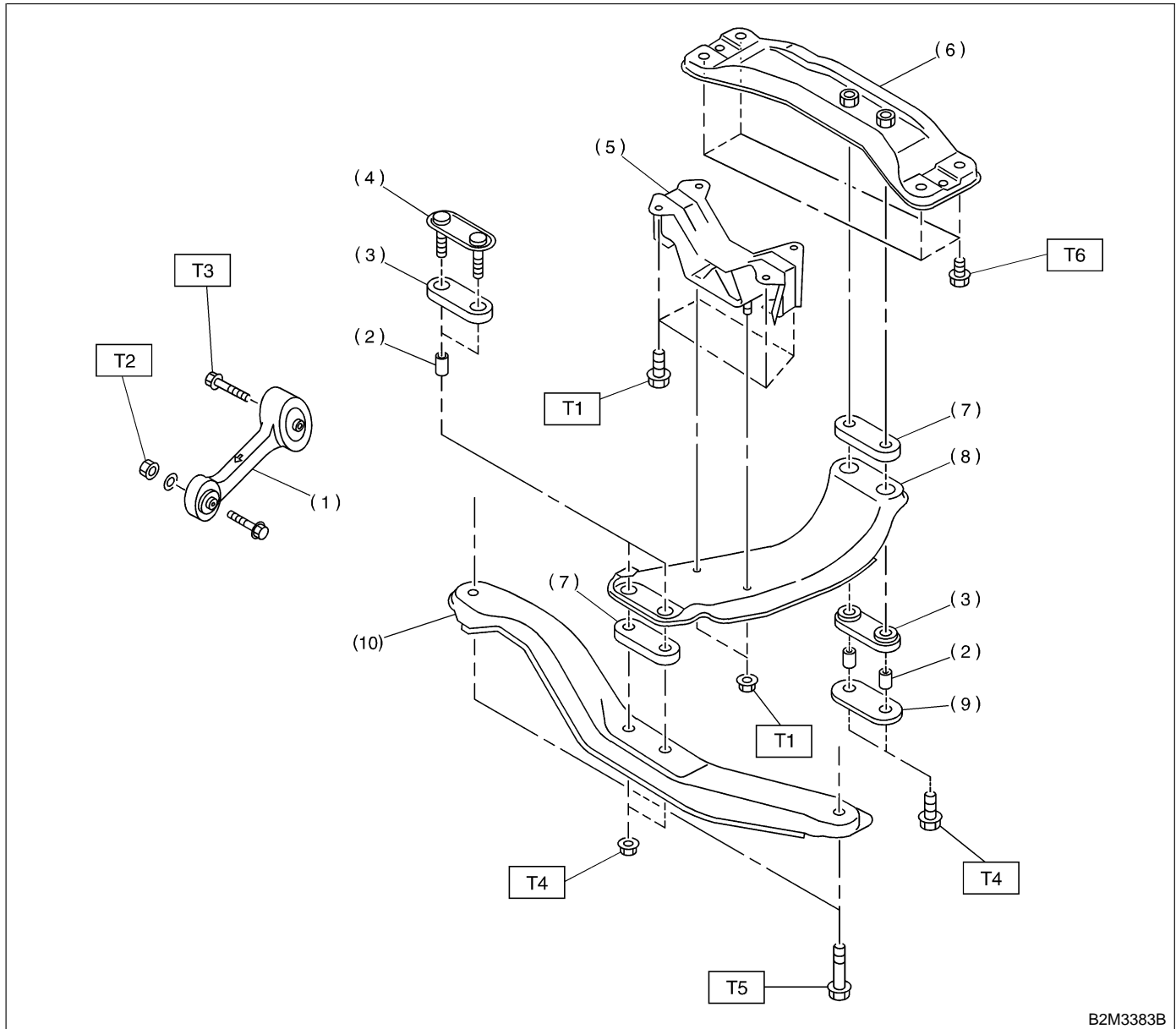


2. Transmission Mounting

A: MT VEHICLES

1. EXCEPT OUTBACK MODEL



B2M3383B

- | | |
|-------------------------|------------------------|
| (1) Pitching stopper | (8) Center crossmember |
| (2) Spacer | (9) Rear plate |
| (3) Cushion C | (10) Front crossmember |
| (4) Front plate | |
| (5) Rear cushion rubber | |
| (6) Rear crossmember | |
| (7) Cushion D | |

Tightening torque: N·m (kg·m, ft·lb)

T1: 34±5 (3.5±0.5, 25.3±3.6)

T2: 49±5 (5.0±0.5, 36.2±3.6)

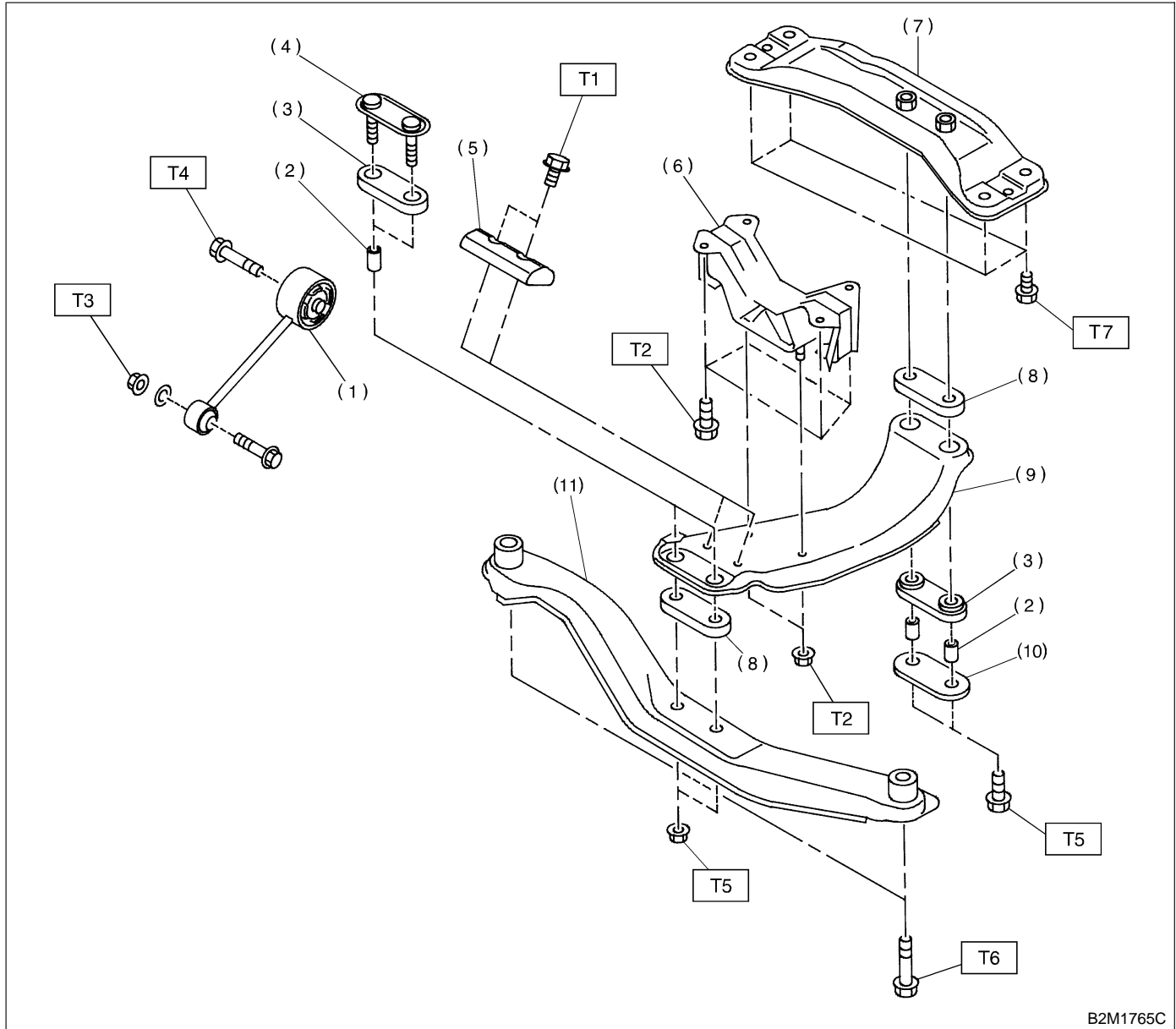
T3: 57±10 (5.8±1.0, 42±7)

T4: 69±15 (7.0±1.5, 51±11)

T5: 137±20 (14±2, 101±14)

T6: 74⁺¹⁰/₋₅ (7.5^{+1.0}/_{-0.5}, 54^{+7.2}/_{-3.6})

2. OUTBACK MODEL



B2M1765C

- (1) Pitching stopper
- (2) Spacer
- (3) Cushion C
- (4) Front plate
- (5) Damper
- (6) Rear cushion rubber
- (7) Rear crossmember
- (8) Cushion D
- (9) Center crossmember
- (10) Rear plate
- (11) Front crossmember

Tightening torque: N·m (kg·m, ft·lb)

T1: 7.4±2.0 (0.75±0.2, 5.4±1.4)

T2: 34±5 (3.5±0.5, 25.3±3.6)

T3: 49±5 (5.0±0.5, 36.2±3.6)

T4: 57±10 (5.8±1.0, 42±7)

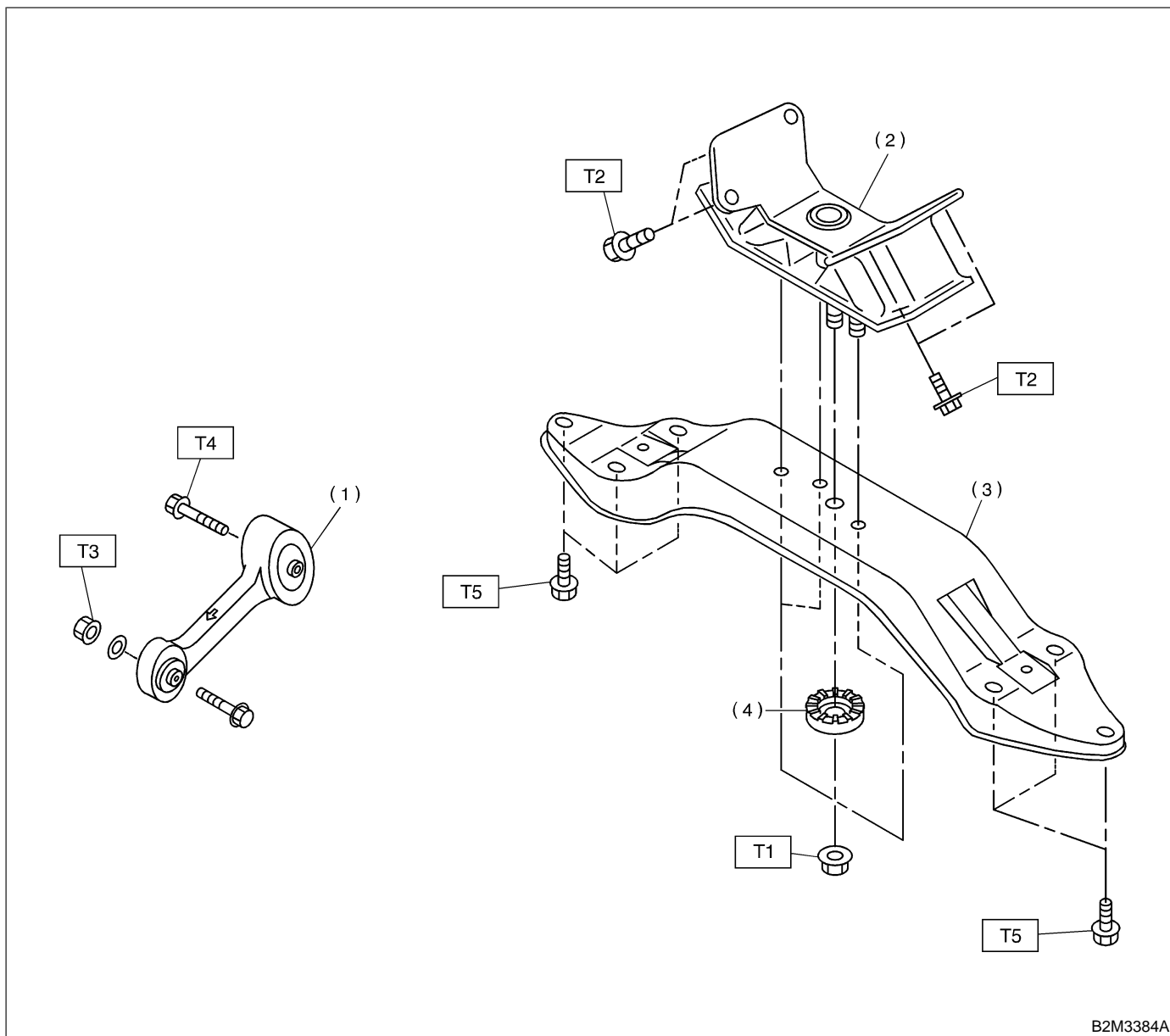
T5: 69±15 (7.0±1.5, 51±11)

T6: 137±20 (14±2, 101±14)

T7: 74⁺¹⁰/₋₅ (7.5^{+1.0}/_{-0.5}, 54^{+7.2}/_{-3.6})

B: AT VEHICLES

1. EXCEPT OUTBACK MODEL



- (1) Pitching stopper
- (2) Rear cushion rubber
- (3) Crossmember
- (4) Stopper

Tightening torque: N·m (kg·m, ft·lb)

T1: 34±5 (3.5±0.5, 25.3±3.6)

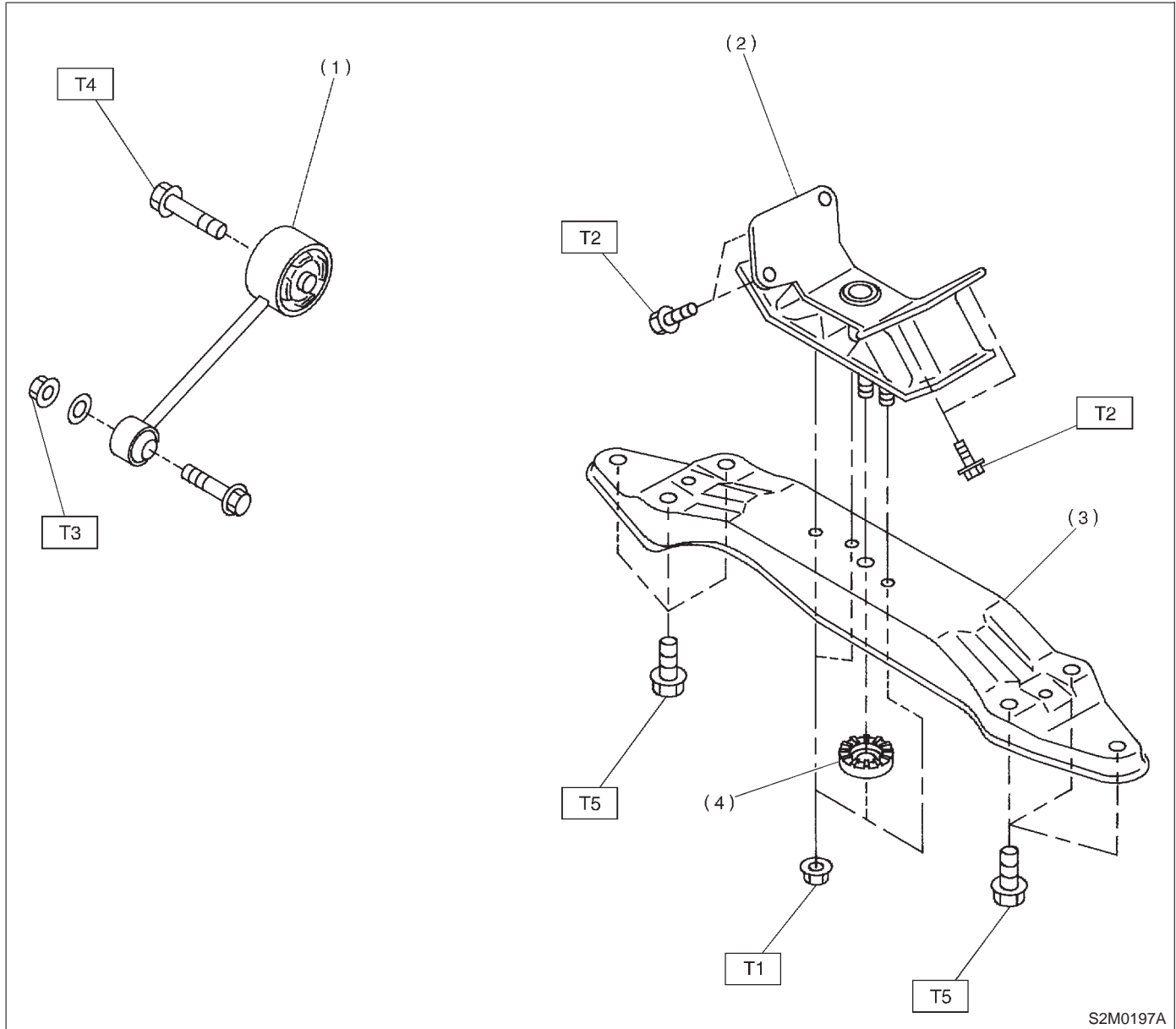
T2: 38±15 (3.9±1.5, 28±11)

T3: 49±5 (5.0±0.5, 36.2±3.6)

T4: 57±10 (5.8±1.0, 42±7)

T5: 74⁺¹⁰/₋₅ (7.5^{+1.0}/_{-0.5}, 54^{+7.2}/_{-3.6})

2. OUTBACK MODEL



- (1) Pitching stopper
- (2) Rear cushion rubber
- (3) Crossmember
- (4) Stopper

Tightening torque: N·m (kg·m, ft·lb)

T1: 34±5 (3.5±0.5, 25.3±3.6)

T2: 38±15 (3.9±1.5, 28±11)

T3: 49±5 (5.0±0.5, 36.2±3.6)

T4: 57±10 (5.8±1.0, 42±7)

T5: 74⁺¹⁰/₋₅ (7.5^{+1.0}/_{-0.5}, 54^{+7.2}/_{-3.6})