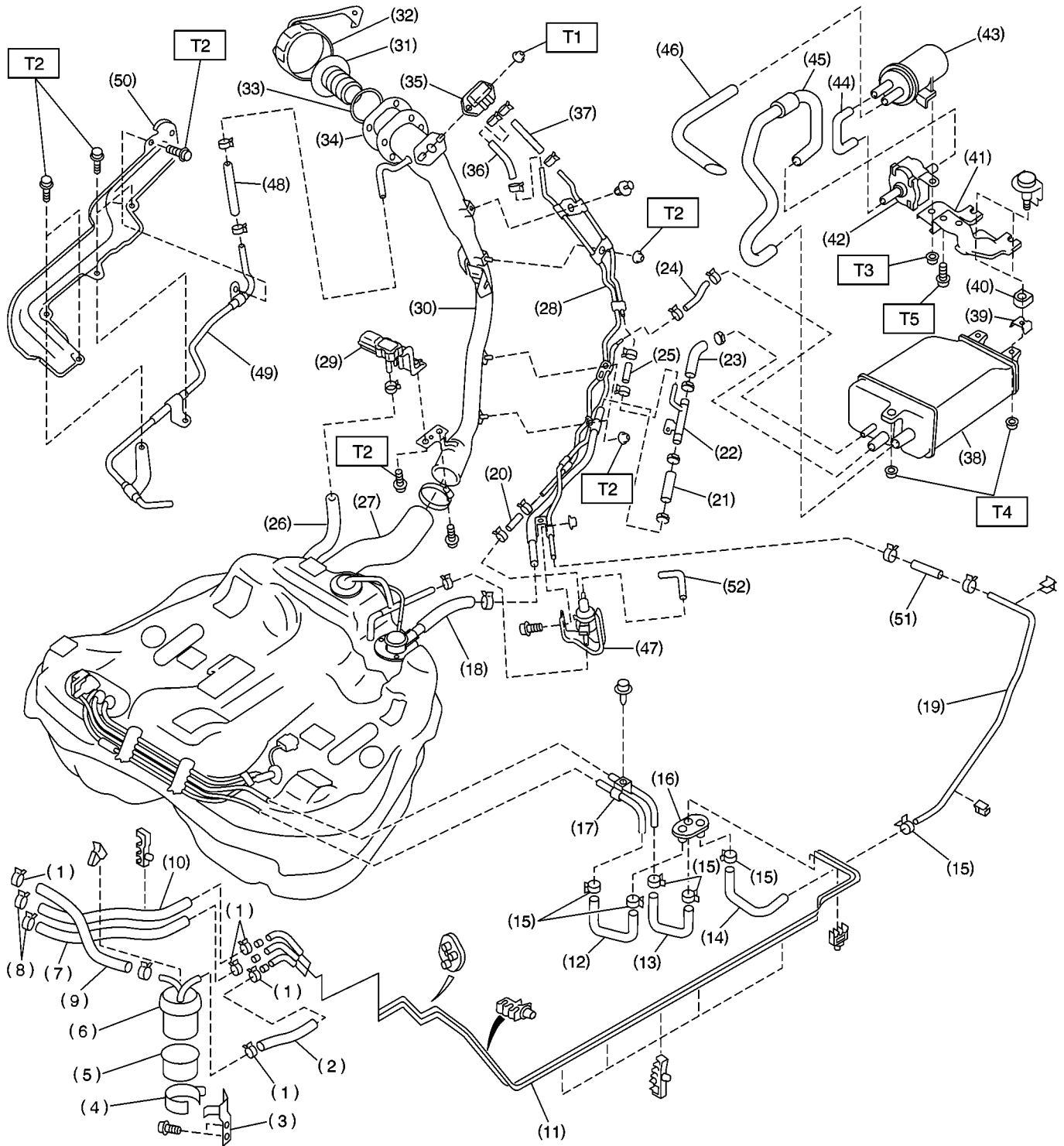


2. Fuel Line



B2M3663A

- | | | |
|---------------------------|-------------------------------------|--|
| (1) Clamp | (22) Air vent pipe | (43) Drain filter |
| (2) Fuel delivery hose A | (23) Evaporation hose J | (44) Drain filter hose A |
| (3) Fuel filter bracket | (24) Evaporation hose K | (45) Drain valve hose |
| (4) Fuel filter holder | (25) Evaporation hose L | (46) Drain filter hose B |
| (5) Fuel filter cup | (26) Fuel tank pressure sensor hose | (47) Pressure control solenoid valve |
| (6) Fuel filter | (27) Fuel filler hose | (48) Evaporation hose O |
| (7) Evaporation hose F | (28) Evaporation pipe B | (49) Evaporation pipe C |
| (8) Clip | (29) Fuel tank pressure sensor | (50) Pipe protector |
| (9) Fuel delivery hose B | (30) Fuel filler pipe | (51) Evaporation hose P |
| (10) Fuel return hose | (31) Ring A | (52) Pressure control solenoid valve
hose |
| (11) Fuel pipe ASSY | (32) Fuel filler cap | |
| (12) Fuel delivery hose C | (33) Ring B | |
| (13) Fuel return hose C | (34) Packing | |
| (14) Evaporation hose G | (35) Shut valve | |
| (15) Clamp | (36) Evaporation hose M | |
| (16) Grommet | (37) Evaporation hose N | |
| (17) Fuel pipe ASSY | (38) Canister | |
| (18) Air vent hose A | (39) Canister lower bracket | |
| (19) Evaporation hose H | (40) Cushion rubber | |
| (20) Evaporation hose I | (41) Canister upper bracket | |
| (21) Air vent hose B | (42) Drain valve | |

Tightening torque: N-m (kg-m, ft-lb)

T1: 4.5±1.5 (0.46±0.15, 3.3±1.1)

T2: 7.5±2.0 (0.76±0.2, 5.5±1.4)

T3: 18±5 (1.8±0.5, 13.0±3.6)

T4: 23±7 (2.3±0.7, 16.6±5.1)

T5: 33±10 (3.4±0.1, 25±7)