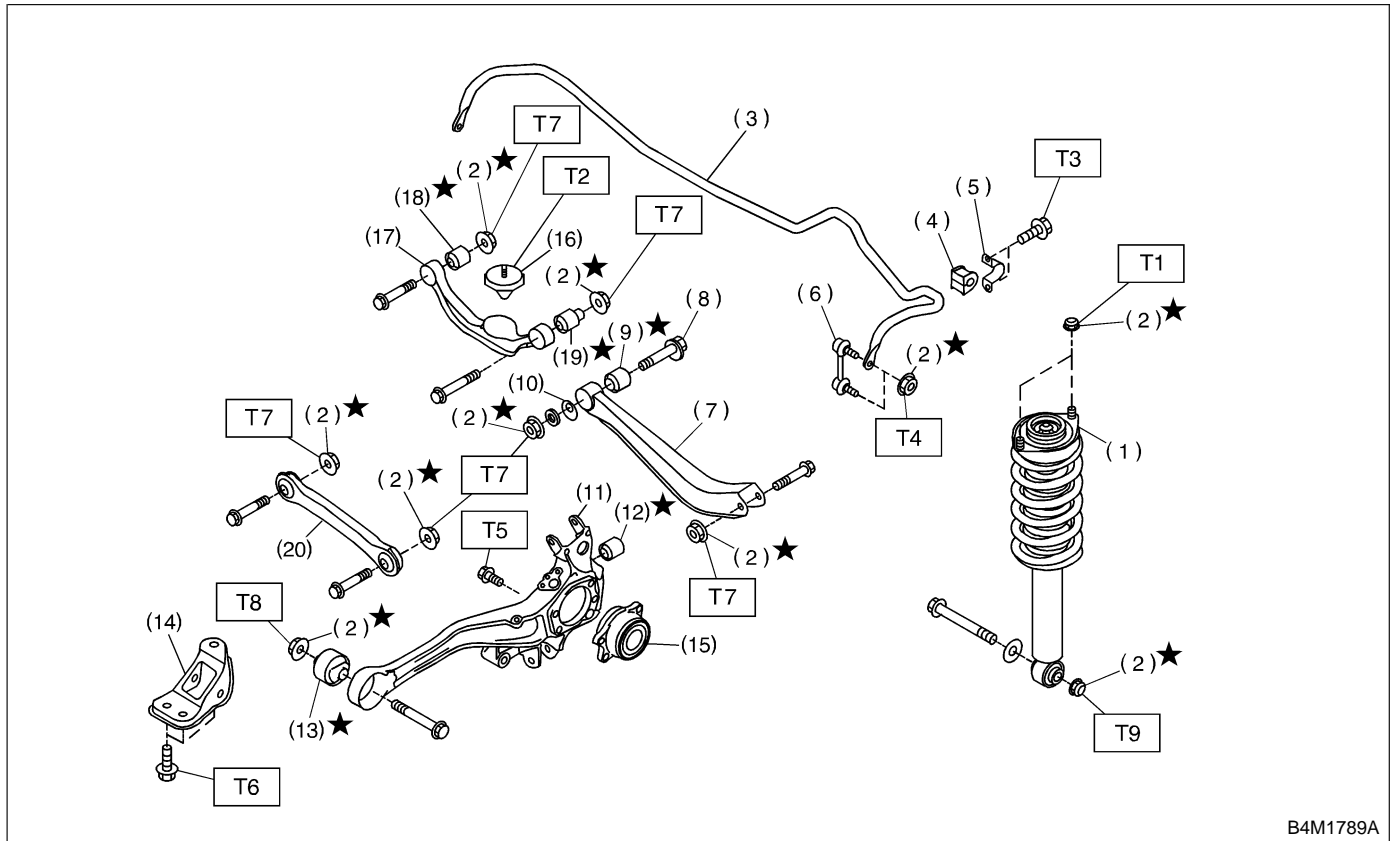


8. Link Front

A: REMOVAL



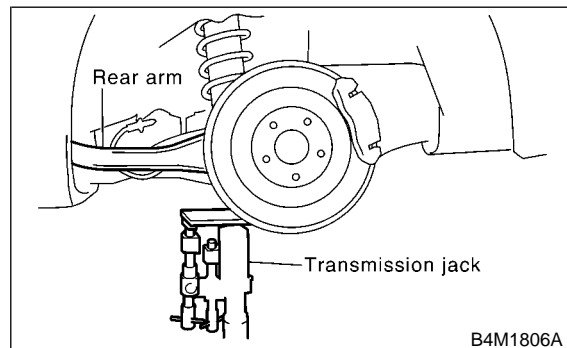
- | | |
|------------------------|-----------------------------------|
| (1) Shock absorber | (12) Rear arm rear bushing |
| (2) Self-locking nut | (13) Rear arm front bushing |
| (3) Stabilizer | (14) Rear arm bracket |
| (4) Stabilizer bushing | (15) Hub bearing unit |
| (5) Clamp | (16) Helper |
| (6) Stabilizer link | (17) Link upper |
| (7) Link rear | (18) Link upper bushing (Inside) |
| (8) Adjusting bolt | (19) Link upper bushing (Outside) |
| (9) Link rear bushing | (20) Link front |
| (10) Adjusting washer | |
| (11) Rear arm | |

Tightening torque: N-m (kg-m, ft-lb)

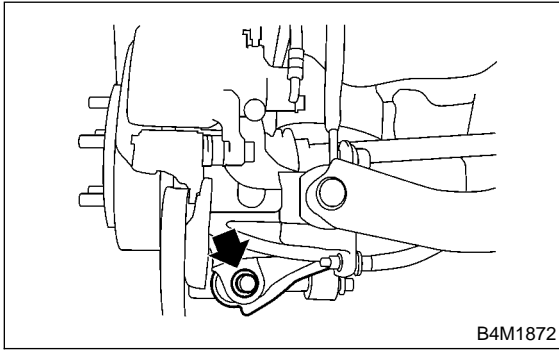
- T1: 30±7 (3.1±0.7, 22.4±5.1)**
T2: 32±10 (3.3±1.0, 23.9±7.2)
T3: 39±7 (4.0±0.7, 28.9±5.1)
T4: 44±6 (4.5±0.6, 32.5±4.3)
T5: 66±10 (6.7±1.0, 48.5±7.2)
T6: 108±15 (11±1.5, 80±11)
T7: 123±15 (12.5±1.5, 90±11)
T8: 147±20 (15±2, 108±14)
T9: 157±20 (16±2, 116±14)

1) Loosen wheel nuts. Lift-up vehicle and remove wheel.

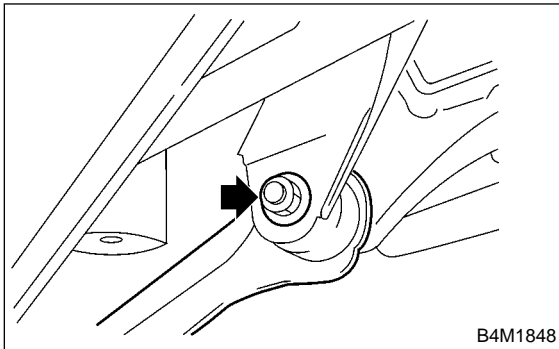
2) Use transmission jack to support rear arm horizontally.



3) Remove bolt securing link front to sub frame.



4) Remove bolts which secure link front to rear arm and detach link front.



NOTE:
Link front bushing cannot be replaced alone. Always replace link front and bushing as a single unit.

B: INSPECTION

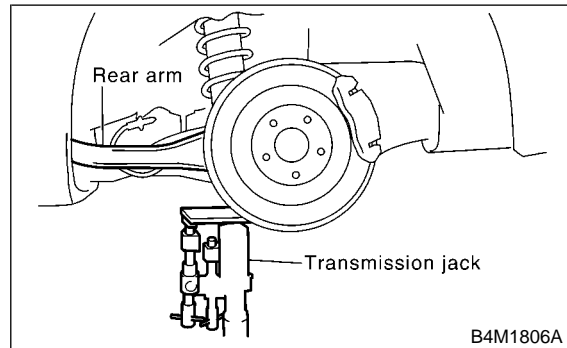
Visually check link front for damage or bends.

C: INSTALLATION

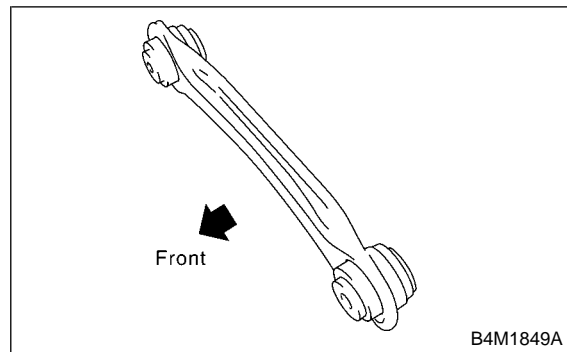
To install, reverse removal procedures, observing the following instructions.

CAUTION:

- Using transmission jack, support rear arm horizontally, install link front and tighten nuts to specified torque.



- Install link front with protruded side facing front.



- Replace self-locking nut.

NOTE:

Check wheel alignment and adjust if necessary.