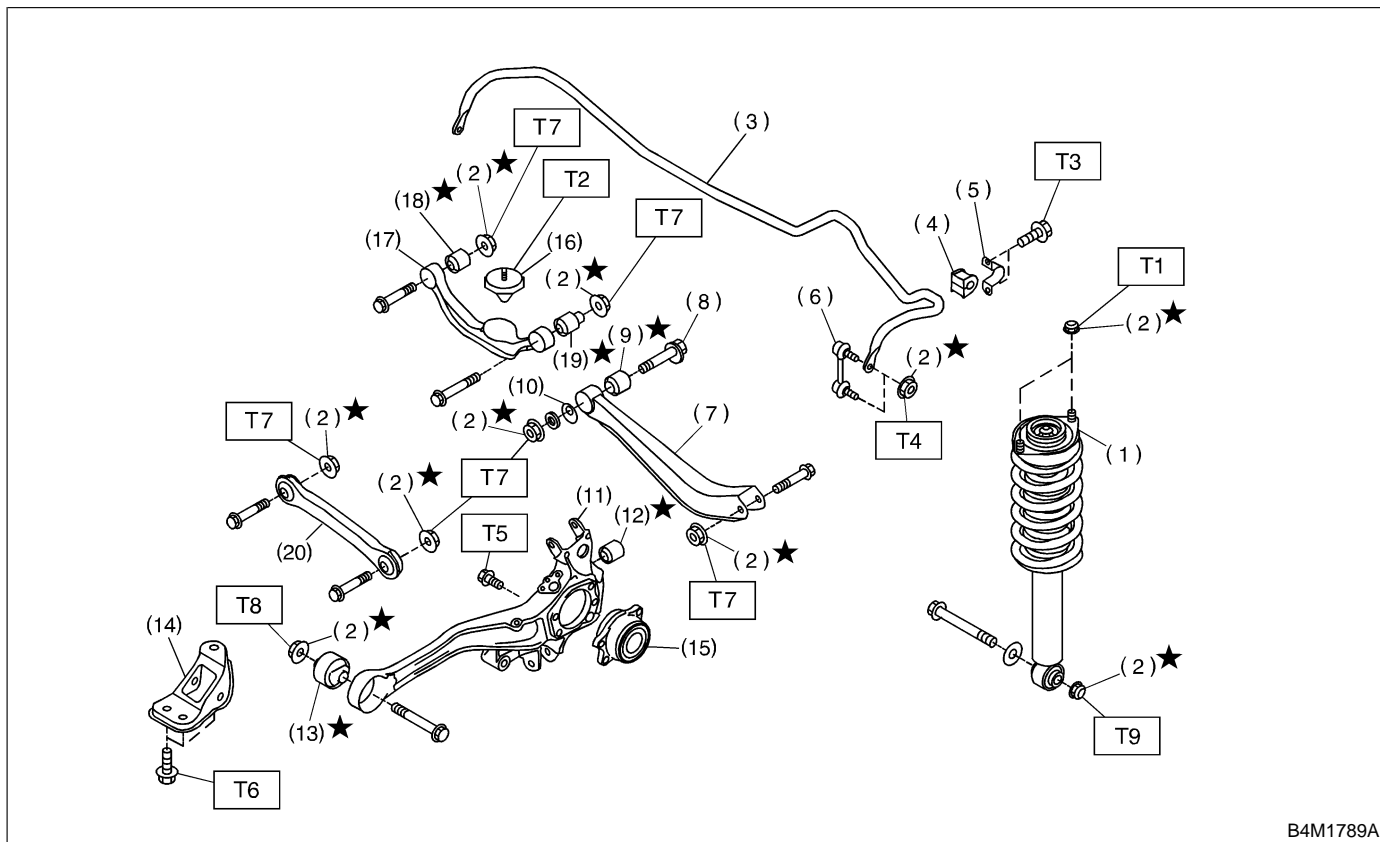


10. Link Upper

A: REMOVAL



B4M1789A

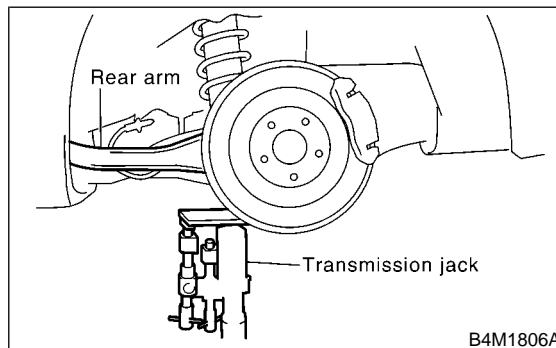
- | | |
|------------------------|-----------------------------------|
| (1) Shock absorber | (12) Rear arm rear bushing |
| (2) Self-locking nut | (13) Rear arm front bushing |
| (3) Stabilizer | (14) Rear arm bracket |
| (4) Stabilizer bushing | (15) Hub bearing unit |
| (5) Clamp | (16) Helper |
| (6) Stabilizer link | (17) Link upper |
| (7) Link rear | (18) Link upper bushing (Inside) |
| (8) Adjusting bolt | (19) Link upper bushing (Outside) |
| (9) Link rear bushing | (20) Link front |
| (10) Adjusting washer | |
| (11) Rear arm | |

Tightening torque: N-m (kg-m, ft-lb)

- T1: 30±7 (3.1±0.7, 22.4±5.1)**
T2: 32±10 (3.3±1.0, 23.9±7.2)
T3: 39±7 (4.0±0.7, 28.9±5.1)
T4: 44±6 (4.5±0.6, 32.5±4.3)
T5: 66±10 (6.7±1.0, 48.5±7.2)
T6: 108±15 (11±1.5, 80±11)
T7: 123±15 (12.5±1.5, 90±11)
T8: 147±20 (15±2, 108±14)
T9: 157±20 (16±2, 116±14)

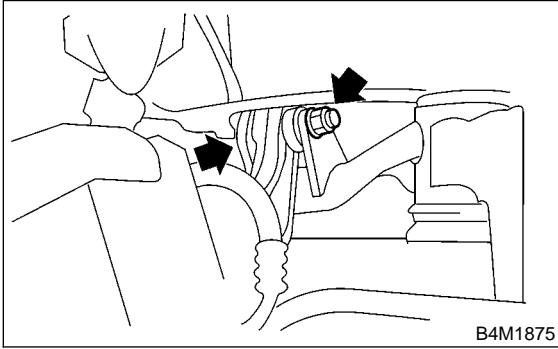
1) Loosen wheel nuts. Lift-up vehicle and remove wheel.

2) Use transmission jack to support rear arm horizontally.

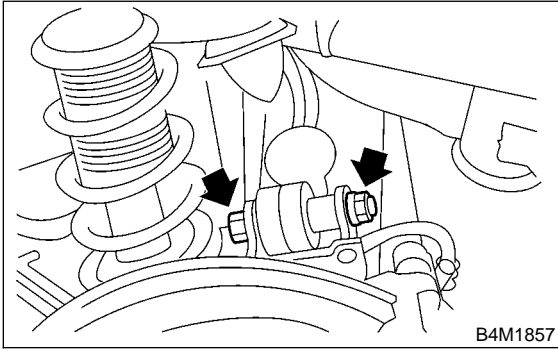


B4M1806A

3) Remove bolt securing link upper to sub frame.

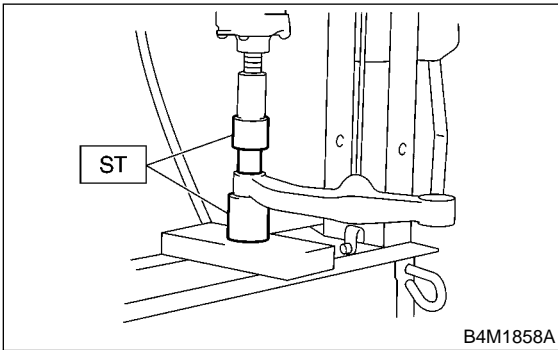


4) Remove bolts which secure link upper to rear arm and detach link upper.



B: DISASSEMBLY

Using ST, press bushing out of place.
ST 20099AE010 INSTALLER & REMOVER



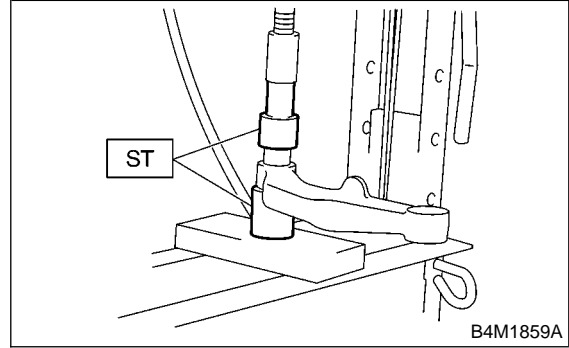
C: INSPECTION

Visually check link upper for damage or bends.

D: ASSEMBLY

1) Using ST, press bushing into place.
ST 20099AE010 INSTALLER & REMOVER

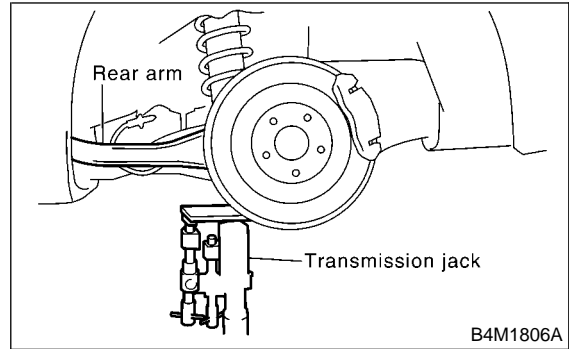
CAUTION:
Outer bushing has a “directional” design. Be sure to install bushing with longer inner housing side facing vehicle rear.



E: INSTALLATION

To install, reverse removal procedures, observing the following instructions.

CAUTION:
● Using transmission jack, support rear arm horizontally, install link upper and tighten nuts to specified torque.



- Tighten nut when installing adjusting bolt.
- Replace self-locking nut.

NOTE:
Check wheel alignment and adjust if necessary.