

3-2 [M1A0]

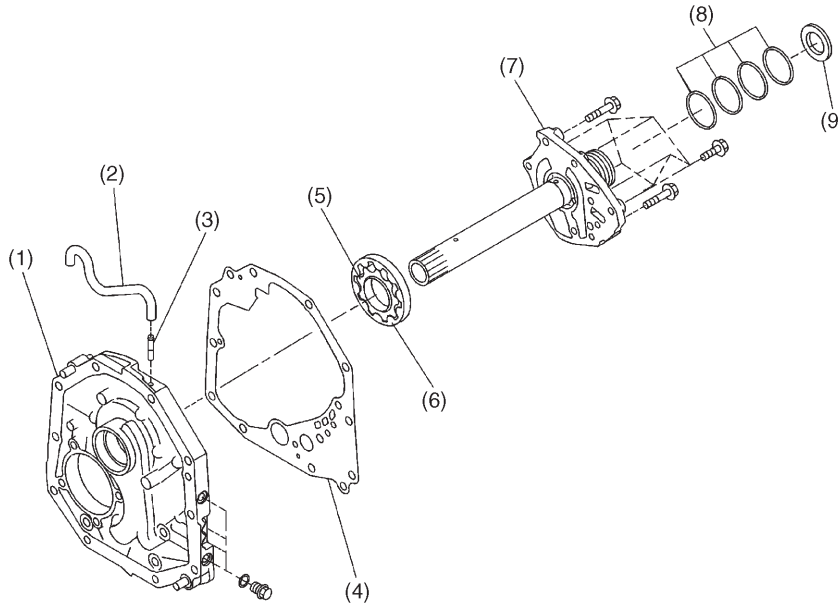
1. Oil Pump

MECHANISM AND FUNCTION

1. Oil Pump

A: CONSTRUCTION

The trochoid pump is housed in the oil pump housing. It consists of a inner rotor (9 teeth), outer rotor (10 teeth) and oil pump cover.



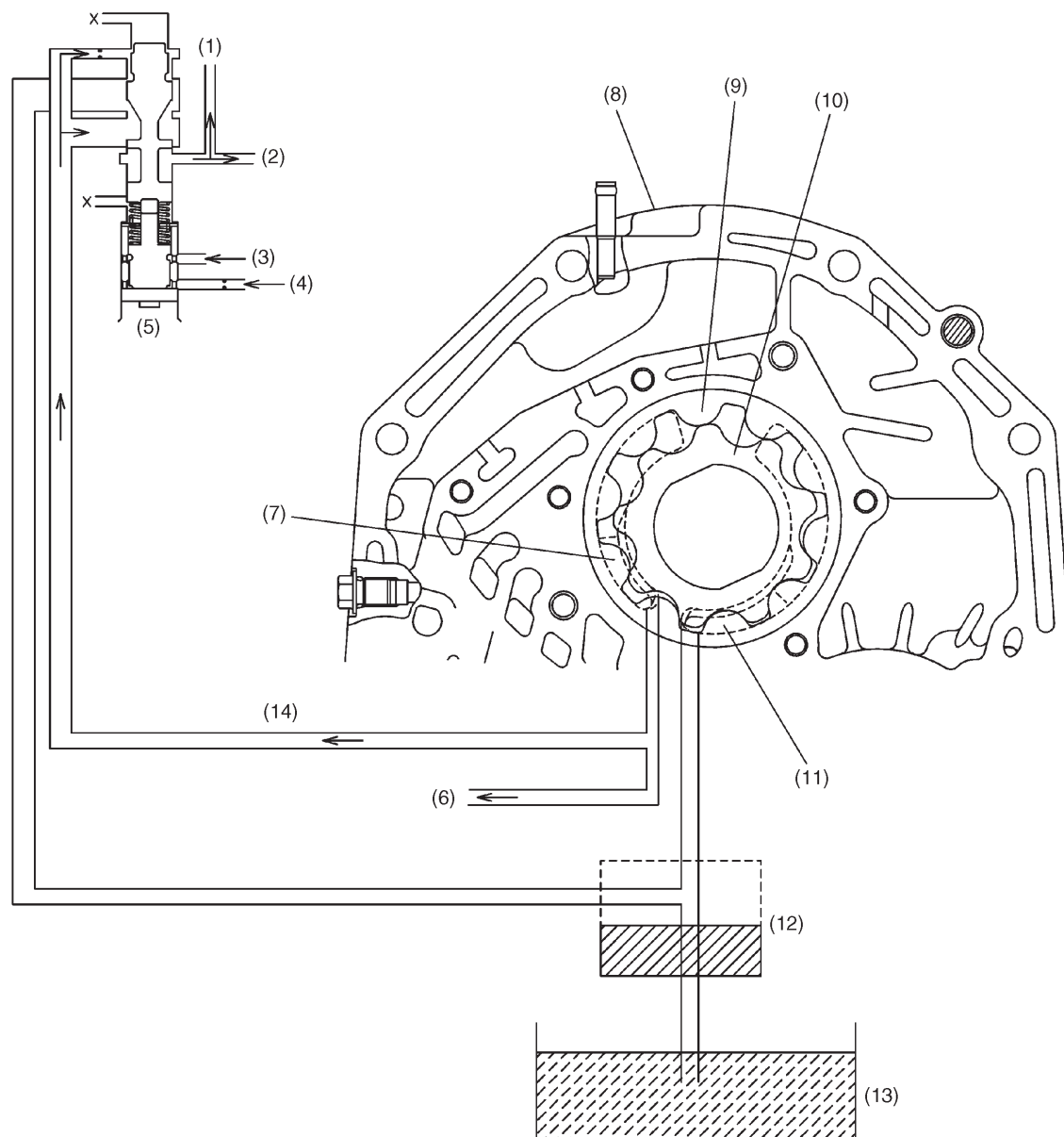
B3H0888A

- | | | |
|----------------------|-----------------|--------------------|
| (1) Oil pump housing | (4) Gasket | (7) Oil pump cover |
| (2) Hose | (5) Inner rotor | (8) Seal ring |
| (3) Nipple | (6) Outer rotor | (9) Thrust bearing |

B: FUNCTION

- The automatic transmission fluid (ATF) is drawn through the oil strainer mounted under the control valve ASSY, and is routed to the transmission case, to the oil pump housing, and to the oil pump cover. It then goes to the suction port.
- As the inner rotor rotates, the outer rotor also rotates. This motion causes ATF to be sucked up through the suction port and discharged under pressure from the discharged port.
- The discharged ATF flows from the oil pump cover to the oil pump housing. It then goes to the transmission case, the control valve and to the regulator valve, thus serving as hydraulic oil and lubricating oil for the torque converter clutch, valves, clutch.
- As engine speed increases, the delivery rate of the trochoid pump also increases.

MECHANISM AND FUNCTION

[M1B0] 3-2
1. Oil Pump

- (1) To torque converter regulator valve
- (2) To manual valve
- (3) From reverse clutch
- (4) From pressure modifier pressure
- (5) Pressure regulator valve
- (6) To manual valve
- (7) Delivery port

- (8) Oil pump housing
- (9) Outer rotor
- (10) Inner rotor
- (11) Suction port
- (12) Oil strainer
- (13) Oil pan
- (14) Line pressure

B3H0889A