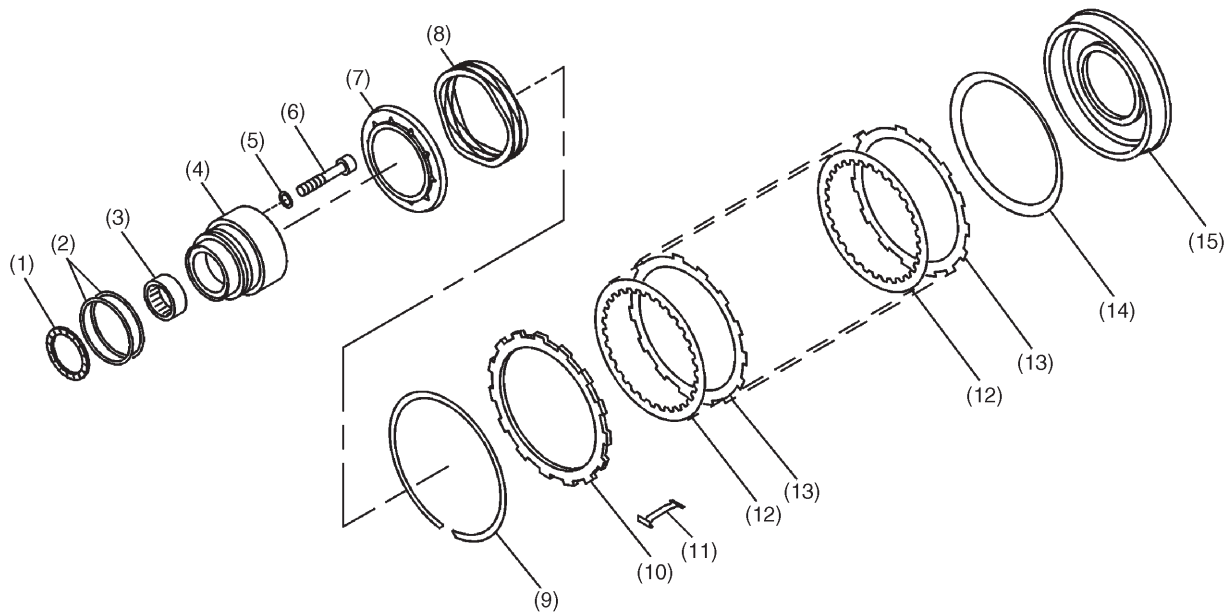


5. Low & Reverse Brake

A: CONSTRUCTION

The piston, dish plate, drive plate, driven plate, retaining plate and snap ring are mounted directly to the transmission case. The spring retainer which is integral with the spring is secured to the inner race of the transmission case engagement surface.



B3H0897A

- | | | |
|-------------------------------|----------------------|---------------------------------|
| (1) Thrust bearing | (6) Bolt | (11) Leaf spring |
| (2) Seal ring | (7) Spring retainer | (12) Drive plate |
| (3) Needle bearing | (8) Return spring | (13) Driven plate |
| (4) One-way clutch inner race | (9) Snap ring | (14) Dish plate |
| (5) Washer | (10) Retaining plate | (15) Low & reverse brake piston |

B: FUNCTION

During 1st speed of the "1st", and reverse, hydraulic pressure from the hydraulic pressure controller is applied to the low & reverse piston. This pressure causes the drive plate and driven plate to engage, and the low clutch to be fixed.