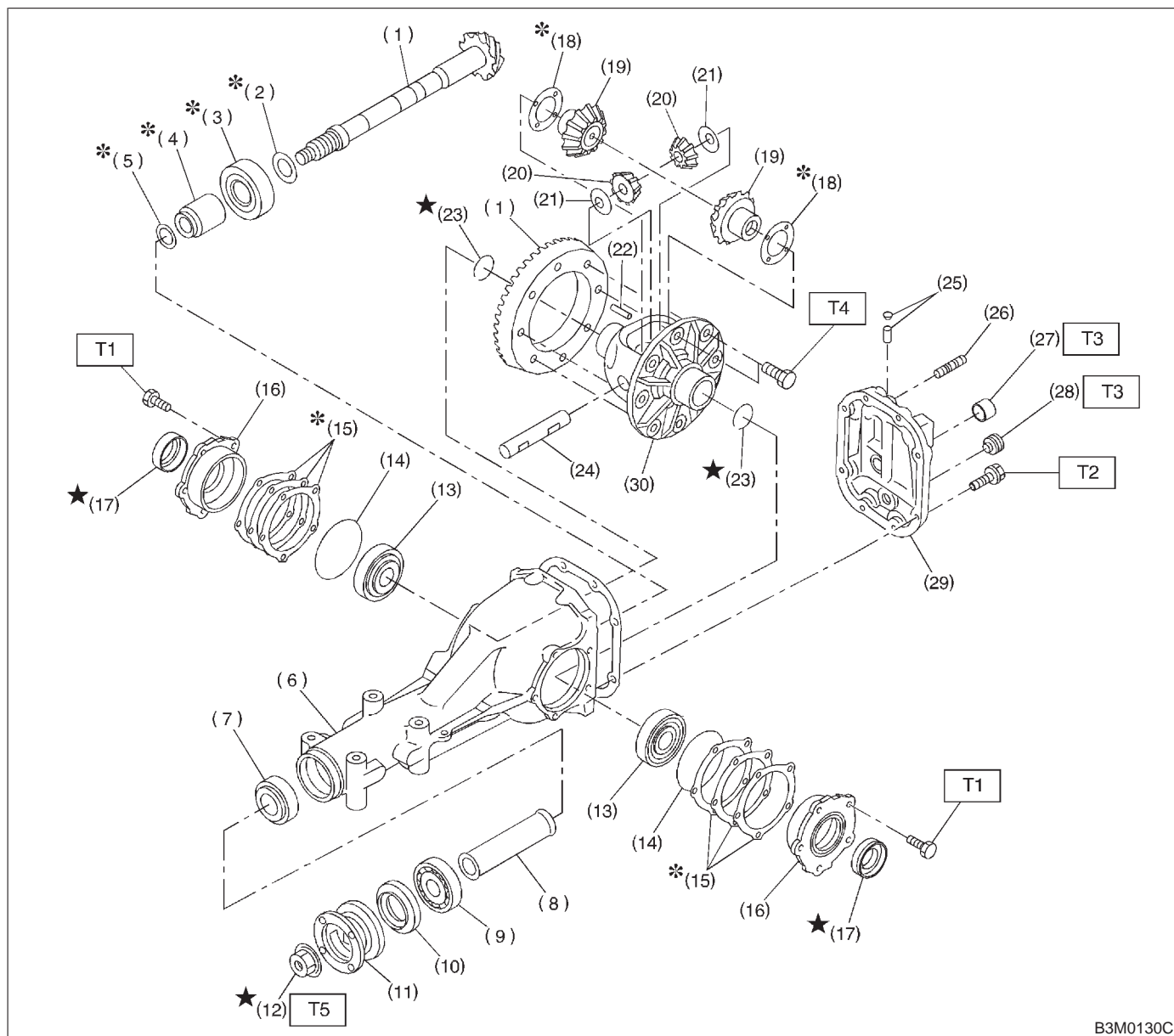


## 2. Rear Differential Assembly

### A: WITHOUT LSD



B3M0130C

- |                                      |                                 |
|--------------------------------------|---------------------------------|
| (1) Pinion crown gear set            | (14) O-ring                     |
| (2) Pinion height adjusting washer   | (15) Side bearing retainer shim |
| (3) Rear bearing                     | (16) Side bearing retainer      |
| (4) Bearing preload adjusting spacer | (17) Side oil seal              |
| (5) Bearing preload adjusting washer | (18) Side gear thrust washer    |
| (6) Differential carrier             | (19) Side gear                  |
| (7) Front bearing                    | (20) Pinion mate gear           |
| (8) Spacer                           | (21) Pinion mate gear washer    |
| (9) Pilot bearing                    | (22) Pinion shaft lock pin      |
| (10) Front oil seal                  | (23) Circlip                    |
| (11) Companion flange                | (24) Pinion mate shaft          |
| (12) Self-locking nut                | (25) Air breather cap           |
| (13) Side bearing                    | (26) Stud bolt                  |
|                                      | (27) Oil filler plug            |

- |                        |
|------------------------|
| (28) Oil drain plug    |
| (29) Rear cover        |
| (30) Differential case |

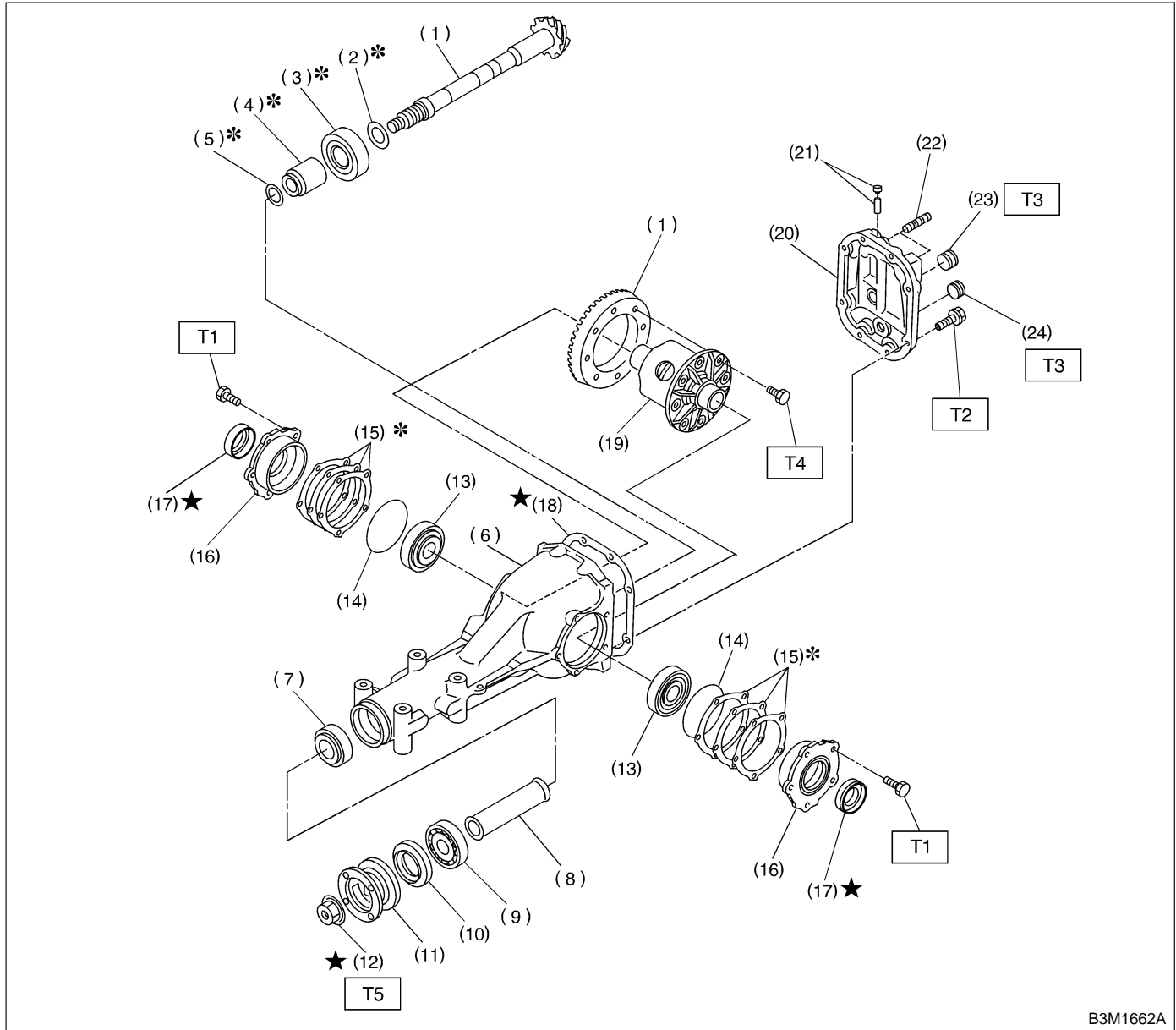
---

**Tightening torque: N·m (kg·m, ft·lb)**

<b>T1:</b>	<b>10.3±1.5 (1.05±0.15, 7.6±1.1)</b>
<b>T2:</b>	<b>29.4±4.9 (3.00±0.50, 21.7±3.6)</b>
<b>T3:</b>	<b>49.0±9.8 (5.0±1.0, 36.2±7.2)</b>
<b>T4:</b>	<b>103.0±9.8 (10.50±1.00, 75.9±7.2)</b>
<b>T5:</b>	<b>181.4±14.7 (18.50±1.50, 133.8±10.8)</b>

---

**B: WITH LSD**



B3M1662A

- |                                      |                                 |
|--------------------------------------|---------------------------------|
| (1) Pinion crown gear set            | (12) Self-locking nut           |
| (2) Pinion height adjusting shim     | (13) Side bearing               |
| (3) Rear bearing                     | (14) O-ring                     |
| (4) Bearing preload adjusting spacer | (15) Side bearing retainer shim |
| (5) Bearing preload adjusting washer | (16) Side bearing retainer      |
| (6) Differential carrier             | (17) Side oil seal              |
| (7) Front bearing                    | (18) Gasket                     |
| (8) Collar                           | (19) Differential case          |
| (9) Pilot bearing                    | (20) Rear cover                 |
| (10) Front oil seal                  | (21) Air breather cap           |
| (11) Companion flange                | (22) Stud bolt                  |
|                                      | (23) Oil filler plug            |

- (24) Oil drain plug

**Tightening torque: N-m (kg-m, ft-lb)**

- T1: 10.3±1.5 (1.05±0.15, 7.6±1.1)**  
**T2: 29.4±4.9 (3.00±0.50, 21.7±3.6)**  
**T3: 49.0±9.8 (5.00±1.00, 36.2±7.2)**  
**T4: 103.0±9.8 (10.50±1.00, 75.9±7.2)**  
**T5: 181.4±14.7 (18.50±1.50, 133.8±10.8)**